



## Product datasheet

### Anti-CDA antibody ab231981

7 Images

#### Overview

<b>Product name</b>	Anti-CDA antibody
<b>Description</b>	Rabbit polyclonal to CDA
<b>Host species</b>	Rabbit
<b>Tested applications</b>	<b>Suitable for:</b> ICC/IF, IHC-P, WB
<b>Species reactivity</b>	<b>Reacts with:</b> Human, Pig
<b>Immunogen</b>	Recombinant full length protein (His-T7-tag) corresponding to Human CDA aa 1 to the C-terminus. Expressed in E.coli. Database link: <a href="#">P32320</a>
	 <a href="#">Run BLAST with</a>  <a href="#">Run BLAST with</a>
<b>Positive control</b>	WB: Recombinant human CDA protein; HeLa whole cell lysate; Pig kidney tissue lysate. IHC-P: Human kidney, lung cancer, skin cancer and bile duct cancer tissue. ICC/IF: HeLa cells.
<b>General notes</b>	<p>The Life Science industry has been in the grips of a reproducibility crisis for a number of years. Abcam is leading the way in addressing this with our range of recombinant monoclonal antibodies and knockout edited cell lines for gold-standard validation. Please check that this product meets your needs before purchasing.</p> <p>If you have any questions, special requirements or concerns, please send us an inquiry and/or contact our Support team ahead of purchase. Recommended alternatives for this product can be found below, along with publications, customer reviews and Q&amp;As</p>

#### Properties

<b>Form</b>	Liquid
<b>Storage instructions</b>	Shipped at 4°C. Store at +4°C short term (1-2 weeks). Upon delivery aliquot. Store at -20°C long term. Avoid freeze / thaw cycle.
<b>Storage buffer</b>	pH: 7.40 Preservative: 0.011% Proclin 300 Constituents: 55.77% Glycerol (glycerin, glycerine), 44.219% PBS
<b>Purity</b>	Immunogen affinity purified
<b>Purification notes</b>	Antigen-specific affinity chromatography followed by Protein A affinity chromatography.
<b>Clonality</b>	Polyclonal
<b>Isotype</b>	IgG

## Applications

**The Abpromise guarantee** Our **Abpromise guarantee** covers the use of ab231981 in the following tested applications.

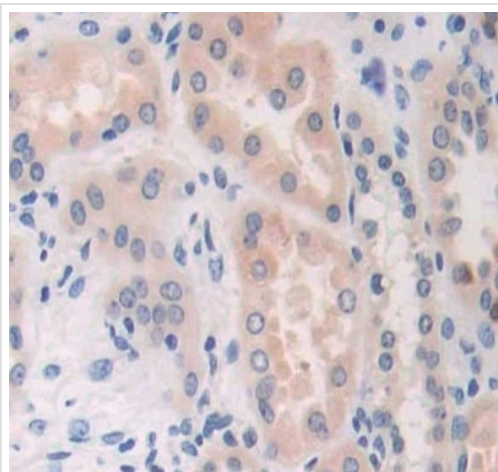
The application notes include recommended starting dilutions; optimal dilutions/concentrations should be determined by the end user.

Application	Abreviews	Notes
ICC/IF		Use a concentration of 5 - 20 µg/ml.
IHC-P		Use a concentration of 5 - 20 µg/ml.
WB		Use a concentration of 0.5 - 2 µg/ml. Predicted molecular weight: 16 kDa.

## Target

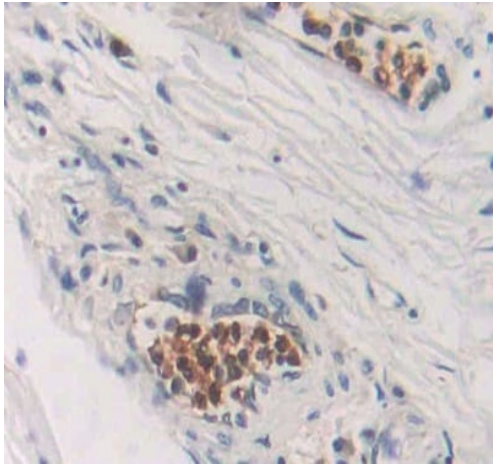
**Relevance** CDA (Cytidine deaminase) scavengers exogenous and endogenous cytidine and 2'-deoxycytidine for UMP synthesis. Growth inhibition of granulocyte-macrophage colony forming cells by human cytidine deaminase requires the catalytic function of the protein. It is highly expressed in granulocytes.

## Images



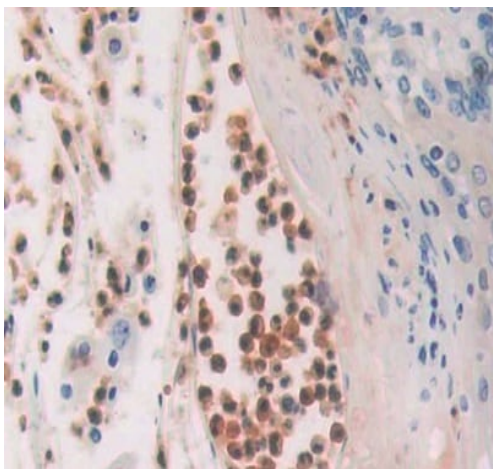
Formalin-fixed, paraffin-embedded human kidney tissue stained for CDA using ab231981 at 10 µg/ml in immunohistochemical analysis.

Immunohistochemistry (Formalin/PFA-fixed paraffin-embedded sections) - Anti-CDA antibody (ab231981)



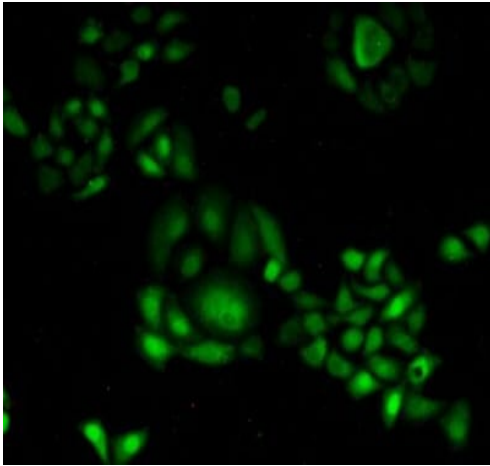
Formalin-fixed, paraffin-embedded human lung cancer tissue stained for CDA using ab231981 at 20 µg/ml in immunohistochemical analysis.

Immunohistochemistry (Formalin/PFA-fixed paraffin-embedded sections) - Anti-CDA antibody (ab231981)



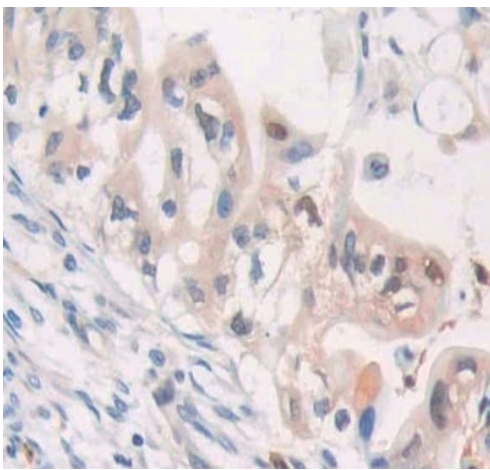
Formalin-fixed, paraffin-embedded human skin cancer tissue stained for CDA using ab231981 at 20 µg/ml in immunohistochemical analysis.

Immunohistochemistry (Formalin/PFA-fixed paraffin-embedded sections) - Anti-CDA antibody (ab231981)



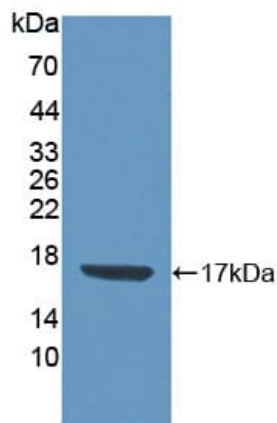
HeLa (human epithelial cell line from cervix adenocarcinoma) cells stained for CDA using ab231981 at 20µg/ml in ICC/IF.

Immunocytochemistry/ Immunofluorescence - Anti-CDA antibody (ab231981)



Formalin-fixed, paraffin-embedded human bile duct cancer tissue stained for CDA using ab231981 at 20 µg/ml in immunohistochemical analysis.

Immunohistochemistry (Formalin/PFA-fixed paraffin-embedded sections) - Anti-CDA antibody (ab231981)



Western blot - Anti-CDA antibody (ab231981)

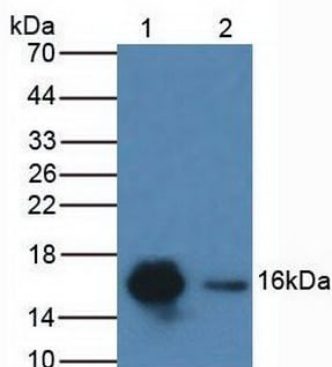
Anti-CDA antibody (ab231981) at 3 µg/ml + Recombinant human CDA

#### Secondary

HRP-Linked Guinea pig Anti-Rabbit at 1/2000 dilution

Developed using the ECL technique.

**Predicted band size:** 16 kDa



Western blot - Anti-CDA antibody (ab231981)

**All lanes :** Anti-CDA antibody (ab231981) at 3 µg/ml

**Lane 1 :** HeLa (human epithelial cell line from cervix adenocarcinoma) cell lysate

**Lane 2 :** Pig kidney lysate

#### Secondary

**All lanes :** HRP-Linked Guinea pig Anti-Rabbit at 1/2000 dilution

Developed using the ECL technique.

**Predicted band size:** 16 kDa

**Please note:** All products are "FOR RESEARCH USE ONLY. NOT FOR USE IN DIAGNOSTIC PROCEDURES"

#### Our Abpromise to you: Quality guaranteed and expert technical support

- Replacement or refund for products not performing as stated on the datasheet
- Valid for 12 months from date of delivery
- Response to your inquiry within 24 hours
- We provide support in Chinese, English, French, German, Japanese and Spanish
- Extensive multi-media technical resources to help you

- We investigate all quality concerns to ensure our products perform to the highest standards

If the product does not perform as described on this datasheet, we will offer a refund or replacement. For full details of the Abpromise, please visit <https://www.abcam.com/abpromise> or contact our technical team.

#### **Terms and conditions**

---

- Guarantee only valid for products bought direct from Abcam or one of our authorized distributors