

Product datasheet

Anti-CDA antibody ab78231

[1 References](#) [2 Images](#)

Overview

Product name	Anti-CDA antibody
Description	Rabbit polyclonal to CDA
Host species	Rabbit
Tested applications	Suitable for: WB, IHC-P
Species reactivity	Reacts with: Human
Immunogen	Synthetic peptide corresponding to N-terminal residues of human CDA
Positive control	Paraffin embedded human spleen tissue
General notes	<p>The Life Science industry has been in the grips of a reproducibility crisis for a number of years. Abcam is leading the way in addressing this with our range of recombinant monoclonal antibodies and knockout edited cell lines for gold-standard validation. Please check that this product meets your needs before purchasing.</p> <p>If you have any questions, special requirements or concerns, please send us an inquiry and/or contact our Support team ahead of purchase. Recommended alternatives for this product can be found below, along with publications, customer reviews and Q&As</p>

Properties

Form	Liquid
Storage instructions	Shipped at 4°C. Upon delivery aliquot and store at -20°C. Avoid repeated freeze / thaw cycles.
Storage buffer	Preservative: 0.01% Sodium azide Constituents: 50% Glycerol, PBS
Purity	Immunogen affinity purified
Clonality	Polyclonal
Isotype	IgG

Applications

The Abpromise guarantee Our **Abpromise guarantee** covers the use of ab78231 in the following tested applications. The application notes include recommended starting dilutions; optimal dilutions/concentrations should be determined by the end user.

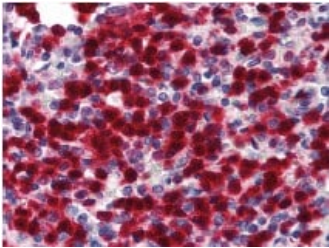
Application	Abreviews	Notes
WB		Use a concentration of 1 µg/ml. Predicted molecular weight: 16 kDa.
IHC-P		Use a concentration of 5 µg/ml.

Target

Relevance

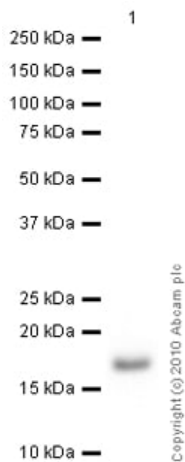
CDA (Cytidine deaminase) scavengers exogenous and endogenous cytidine and 2'-deoxycytidine for UMP synthesis. Growth inhibition of granulocyte-macrophage colony forming cells by human cytidine deaminase requires the catalytic function of the protein. It is highly expressed in granulocytes.

Images



Immunohistochemistry (Formalin/PFA-fixed paraffin-embedded sections) - Anti-CDA antibody (ab78231)

Immunohistochemical analysis of CDA expression in Formalin-Fixed Paraffin Embedded human spleen using 5 µg/ml ab78231



Western blot - Anti-CDA antibody (ab78231)

Anti-CDA antibody (ab78231) at 1 µg/ml + Human spleen tissue lysate - total protein ([ab29699](#)) at 10 µg

Secondary

Goat Anti-Rabbit IgG H&L (HRP) preadsorbed ([ab97080](#)) at 1/5000 dilution

Developed using the ECL technique.

Performed under reducing conditions.

Predicted band size: 16 kDa

Observed band size: 17 kDa

Exposure time: 4 minutes

Please note: All products are "FOR RESEARCH USE ONLY. NOT FOR USE IN DIAGNOSTIC PROCEDURES"

Our Abpromise to you: Quality guaranteed and expert technical support

- Replacement or refund for products not performing as stated on the datasheet
- Valid for 12 months from date of delivery
- Response to your inquiry within 24 hours

- We provide support in Chinese, English, French, German, Japanese and Spanish
- Extensive multi-media technical resources to help you
- We investigate all quality concerns to ensure our products perform to the highest standards

If the product does not perform as described on this datasheet, we will offer a refund or replacement. For full details of the Abpromise, please visit <https://www.abcam.com/abpromise> or contact our technical team.

Terms and conditions

- Guarantee only valid for products bought direct from Abcam or one of our authorized distributors