

Product datasheet

Anti-CDA antibody [EPR20525] ab222515

Recombinant RabMAb

[1 References](#) [6 Images](#)

Overview

Product name	Anti-CDA antibody [EPR20525]
Description	Rabbit monoclonal [EPR20525] to CDA
Host species	Rabbit
Tested applications	Suitable for: Flow Cyt (Intra), WB, IHC-P
Species reactivity	Reacts with: Human
Immunogen	Recombinant fragment. This information is proprietary to Abcam and/or its suppliers.
Positive control	WB: HeLa, HepG2 and TF-1 whole cell lysates; Human fetal spleen and fetal kidney lysates. IHC-P: Human spleen, liver, colon, liver cancer and colon cancer tissues. Flow Cyt (intra): HeLa cells.
General notes	<p>This product is a recombinant monoclonal antibody, which offers several advantages including:</p> <ul style="list-style-type: none">- High batch-to-batch consistency and reproducibility- Improved sensitivity and specificity- Long-term security of supply- Animal-free production <p>For more information see here.</p> <p>Our RabMAb[®] technology is a patented hybridoma-based technology for making rabbit monoclonal antibodies. For details on our patents, please refer to RabMAb[®] patents.</p>

Properties

Form	Liquid
Storage instructions	Shipped at 4°C. Store at +4°C short term (1-2 weeks). Upon delivery aliquot. Store at -20°C long term. Avoid freeze / thaw cycle.
Storage buffer	pH: 7.2 Preservative: 0.01% Sodium azide Constituents: PBS, 40% Glycerol, 0.05% BSA
Purity	Protein A purified
Clonality	Monoclonal
Clone number	EPR20525
Isotype	IgG

Applications

The Abpromise guarantee

Our **Abpromise guarantee** covers the use of ab222515 in the following tested applications.

The application notes include recommended starting dilutions; optimal dilutions/concentrations should be determined by the end user.

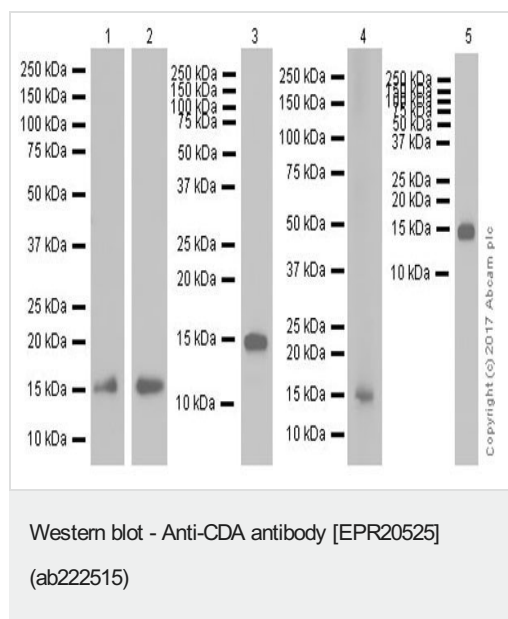
Application	Abreviews	Notes
Flow Cyt (Intra)		1/70.
WB		1/1000. Predicted molecular weight: 16 kDa.
IHC-P		1/2000. Perform heat mediated antigen retrieval with Tris/EDTA buffer pH 9.0 before commencing with IHC staining protocol.

Target

Relevance

CDA (Cytidine deaminase) scavengers exogenous and endogenous cytidine and 2'-deoxycytidine for UMP synthesis. Growth inhibition of granulocyte-macrophage colony forming cells by human cytidine deaminase requires the catalytic function of the protein. It is highly expressed in granulocytes.

Images



All lanes : Anti-CDA antibody [EPR20525] (ab222515) at 1/1000 dilution

Lane 1 : HeLa (human epithelial cell line from cervix adenocarcinoma) whole cell lysate

Lane 2 : Human fetal spleen lysate

Lane 3 : HepG2 (human liver hepatocellular carcinoma cell line) whole cell lysate

Lane 4 : TF-1 (human bone marrow erythroleukemia cell line) whole cell lysate

Lane 5 : Human fetal kidney lysate

Lysates/proteins at 10 µg per lane.

Secondary

All lanes : Goat Anti-Rabbit IgG H&L (HRP) (**ab97051**) at 1/20000 dilution

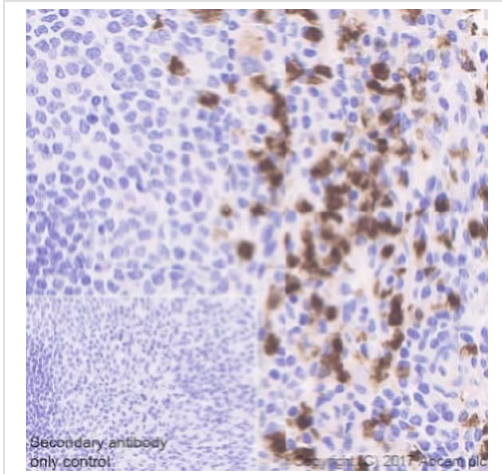
Developed using the ECL technique.

Predicted band size: 16 kDa

Observed band size: 16 kDa

Exposure times: Lane 1: 3 minutes; Lane 2: 8 seconds; Lanes 3/5: 5 seconds; Lane 4: 30 seconds.

Blocking/Dilution buffer: 5% NFDm/TBST.

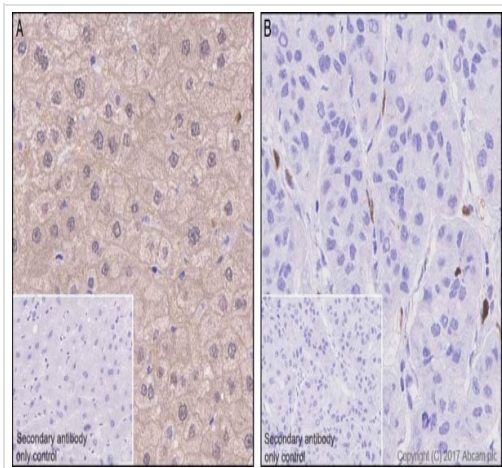


Immunohistochemistry (Formalin/PFA-fixed paraffin-embedded sections) - Anti-CDA antibody [EPR20525] (ab222515)

Immunohistochemical analysis of paraffin-embedded human spleen tissue labeling CDA with ab222515 at 1/2000 dilution, followed by Goat Anti-Rabbit IgG H&L (HRP) Ready to use. Nuclear and cytoplasmic staining on neutrophils of human spleen (PMID: 11069255). Counter stained with Hematoxylin.

Secondary antibody only control: Used PBS instead of primary antibody, secondary antibody is Goat Anti-Rabbit IgG H&L (HRP) Ready to use.

Perform heat mediated antigen retrieval with Tris/EDTA buffer pH 9.0 before commencing with IHC staining protocol.

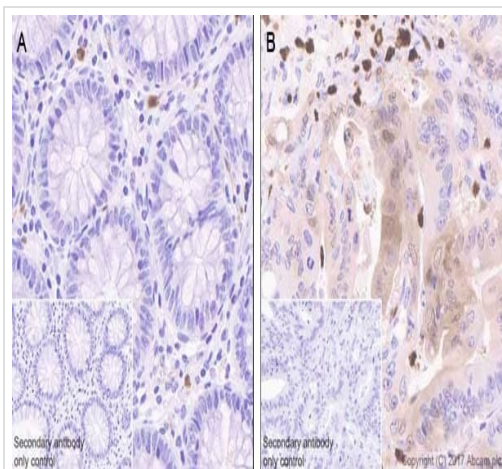


Immunohistochemistry (Formalin/PFA-fixed paraffin-embedded sections) - Anti-CDA antibody [EPR20525] (ab222515)

Immunohistochemical analysis of paraffin-embedded human normal liver (panel A) and liver cancer (panel B) tissues labeling CDA with ab222515 at 1/2000 dilution, followed by Goat Anti-Rabbit IgG H&L (HRP) Ready to use. Cytoplasmic and nuclear staining on normal human liver tissues, with only sporadic stromal cells showing positive staining in human liver cancer. The IHC signal on human liver cancer tissue was much lower than its corresponding normal tissue (PMID: 9849491). Counter stained with Hematoxylin.

Secondary antibody only control: Used PBS instead of primary antibody, secondary antibody is Goat Anti-Rabbit IgG H&L (HRP) Ready to use.

Perform heat mediated antigen retrieval with Tris/EDTA buffer pH 9.0 before commencing with IHC staining protocol.

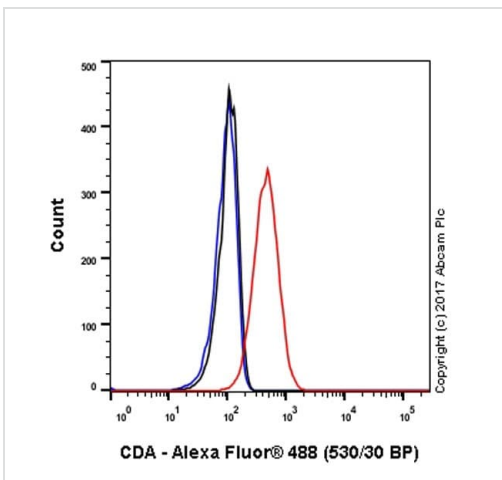


Immunohistochemistry (Formalin/PFA-fixed paraffin-embedded sections) - Anti-CDA antibody [EPR20525] (ab222515)

Immunohistochemical analysis of paraffin-embedded human normal colon (panel A) and colon cancer (panel B) tissues labeling CDA with ab222515 at 1/2000 dilution, followed by Goat Anti-Rabbit IgG H&L (HRP) Ready to use. Cytoplasmic and nuclear staining on sporadic stromal cells of human normal colon tissue, while adjacent cancer cells and some stromal cells show moderate positive staining. The IHC signal on human colon cancer tissue was higher than its corresponding normal tissue (PMID: 9849491). Counter stained with Hematoxylin.

Secondary antibody only control: Used PBS instead of primary antibody, secondary antibody is Goat Anti-Rabbit IgG H&L (HRP) Ready to use.

Perform heat mediated antigen retrieval with Tris/EDTA buffer pH 9.0 before commencing with IHC staining protocol.



Flow Cytometry (Intracellular) - Anti-CDA antibody [EPR20525] (ab222515)

Intracellular flow cytometric analysis of 4% paraformaldehyde-fixed, 90% methanol permeabilized HeLa (human epithelial cell line from cervix adenocarcinoma) cell line labeling CDA with ab222515 at 1/70 dilution (red) compared with a Rabbit IgG, monoclonal [EPR25A] - Isotype Control (ab172730) (black) and an unlabeled control (cells without incubation with primary antibody and secondary antibody) (blue). Goat Anti-Rabbit IgG H&L (Alexa Fluor® 488) (ab150077) at 1/2000 dilution was used as the secondary antibody.

Why choose a recombinant antibody?

Research with confidence
Consistent and reproducible results

Long-term and scalable supply
Recombinant technology

Success from the first experiment
Confirmed specificity

Ethical standards compliant
Animal-free production

Anti-CDA antibody [EPR20525] (ab222515)

Please note: All products are "FOR RESEARCH USE ONLY. NOT FOR USE IN DIAGNOSTIC PROCEDURES"

Our Abpromise to you: Quality guaranteed and expert technical support

- Replacement or refund for products not performing as stated on the datasheet
- Valid for 12 months from date of delivery
- Response to your inquiry within 24 hours
- We provide support in Chinese, English, French, German, Japanese and Spanish
- Extensive multi-media technical resources to help you
- We investigate all quality concerns to ensure our products perform to the highest standards

If the product does not perform as described on this datasheet, we will offer a refund or replacement. For full details of the Abpromise, please visit <https://www.abcam.com/abpromise> or contact our technical team.

Terms and conditions

- Guarantee only valid for products bought direct from Abcam or one of our authorized distributors