

### Anti-CDC123 antibody [EP5861] ab129101

Recombinant RabMAb

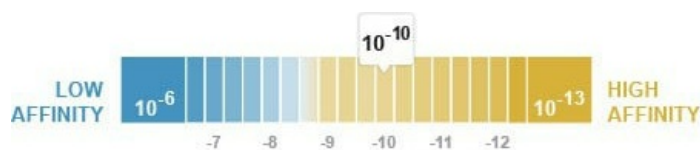
4 Images

#### Overview

Product name	Anti-CDC123 antibody [EP5861]
Description	Rabbit monoclonal [EP5861] to CDC123
Host species	Rabbit
Tested applications	<b>Suitable for:</b> Flow Cyt (Intra), WB <b>Unsuitable for:</b> ICC/IF or IHC-P
Species reactivity	<b>Reacts with:</b> Mouse, Rat, Human
Immunogen	Synthetic peptide. This information is proprietary to Abcam and/or its suppliers.
Positive control	HeLa, 293T, Caco 2, RAW264.7 and PC12 cell lysates; HeLa cells.
General notes	This product is a recombinant monoclonal antibody, which offers several advantages including: <ul style="list-style-type: none"> <li>- High batch-to-batch consistency and reproducibility</li> <li>- Improved sensitivity and specificity</li> <li>- Long-term security of supply</li> <li>- Animal-free production</li> </ul> For more information <a href="#">see here</a> . Our RabMAb <sup>®</sup> technology is a patented hybridoma-based technology for making rabbit monoclonal antibodies. For details on our patents, please refer to <a href="#">RabMAb<sup>®</sup> patents</a> .

#### Properties

Form	Liquid
Storage instructions	Shipped at 4°C. Store at -20°C. Stable for 12 months at -20°C.
Dissociation constant (K <sub>D</sub> )	K <sub>D</sub> = 1.15 x 10 <sup>-10</sup> M



[Learn more about K<sub>D</sub>](#)

Storage buffer	pH: 7.20 Preservative: 0.01% Sodium azide Constituents: 9% PBS, 40% Glycerol (glycerin, glycerine), 0.05% BSA, 50% Tissue culture
----------------	---

	supernatant
<b>Purity</b>	Tissue culture supernatant
<b>Clonality</b>	Monoclonal
<b>Clone number</b>	EP5861
<b>Isotype</b>	IgG

## Applications

**The Abpromise guarantee** Our **Abpromise guarantee** covers the use of ab129101 in the following tested applications. The application notes include recommended starting dilutions; optimal dilutions/concentrations should be determined by the end user.

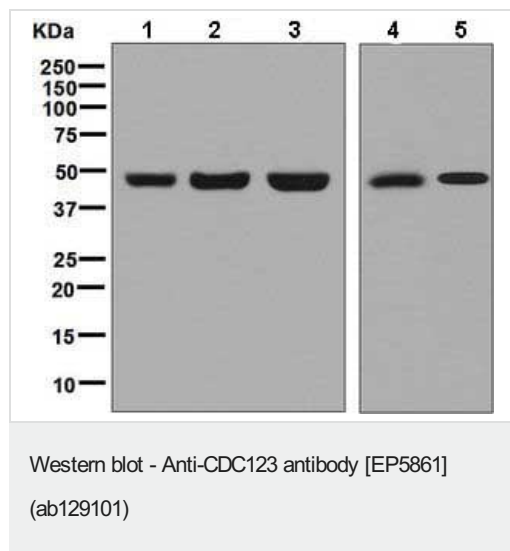
Application	Abreviews	Notes
<b>Flow Cyt (Intra)</b>		1/10 - 1/100. <b>ab172730</b> - Rabbit monoclonal IgG, is suitable for use as an isotype control with this antibody.
<b>WB</b>		1/1000 - 1/10000. Detects a band of approximately 45 kDa (predicted molecular weight: 39 kDa).

**Application notes** Is unsuitable for ICC/IF or IHC-P.

## Target

<b>Function</b>	Required for S phase entry of the cell cycle.
<b>Tissue specificity</b>	Widely expressed. Expressed in spleen, thymus, prostate, testis, ovary, small intestine, colon and leukocytes with the highest expression in testis.
<b>Sequence similarities</b>	Belongs to the CDC123 family.
<b>Cellular localization</b>	Cytoplasm.

## Images



**All lanes** : Anti-CDC123 antibody [EP5861] (ab129101) at 1/1000 dilution

**Lane 1** : HeLa cell lysate

**Lane 2** : 293T (Human embryonic kidney epithelial cell) cell lysate

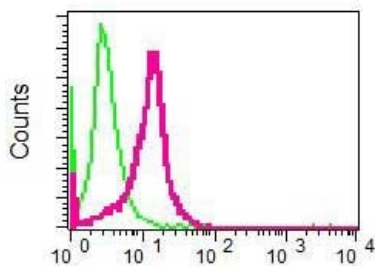
**Lane 3** : Caco-2 cell lysate

**Lane 4** : RAW 264.7 cell lysate

**Lane 5** : PC12 cell lysate

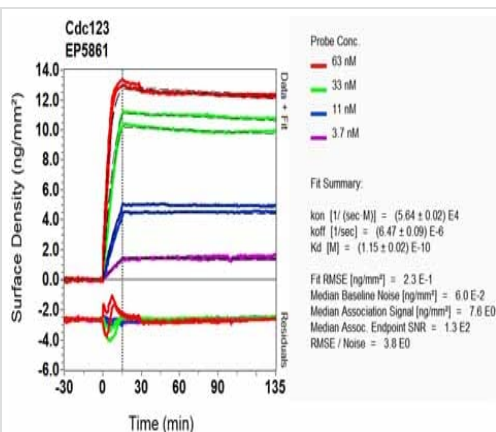
Lysates/proteins at 10 µg per lane.

**Predicted band size:** 39 kDa



Flow Cytometry (Intracellular) - Anti-CDC123  
antibody [EP5861] (ab129101)

ab129101, at 1/10 dilution staining CDC123 in permeabilized HeLa cells by intracellular flow cytometry (red) or a Rabbit IgG negative control (green).



OL-RD Scanning - Anti-CDC123 antibody [EP5861]  
(ab129101)

Equilibrium disassociation constant ( $K_D$ )

Learn more about  $K_D$

[Click here to learn more about  \$K\_D\$](#)

Why choose a  
recombinant antibody?



**Research with  
confidence**  
Consistent and  
reproducible results



**Long-term and  
scalable supply**  
Recombinant  
technology



**Success from the  
first experiment**  
Confirmed  
specificity



**Ethical standards  
compliant**  
Animal-free  
production

Anti-CDC123 antibody [EP5861] (ab129101)

**Please note:** All products are "FOR RESEARCH USE ONLY. NOT FOR USE IN DIAGNOSTIC PROCEDURES"

**Our Abpromise to you: Quality guaranteed and expert technical support**

- 
- Replacement or refund for products not performing as stated on the datasheet
  - Valid for 12 months from date of delivery
  - Response to your inquiry within 24 hours
  
  - We provide support in Chinese, English, French, German, Japanese and Spanish
  - Extensive multi-media technical resources to help you
  - We investigate all quality concerns to ensure our products perform to the highest standards

If the product does not perform as described on this datasheet, we will offer a refund or replacement. For full details of the Abpromise, please visit <https://www.abcam.com/abpromise> or contact our technical team.

#### **Terms and conditions**

---

- Guarantee only valid for products bought direct from Abcam or one of our authorized distributors