



Product datasheet

Anti-Cdc20 antibody ab183479

[15 References](#) [3 Images](#)

Overview

Product name	Anti-Cdc20 antibody
Description	Rabbit polyclonal to Cdc20
Host species	Rabbit
Tested applications	Suitable for: WB, IP, ICC/IF
Species reactivity	Reacts with: Mouse, Rat, Human
Immunogen	Recombinant fragment corresponding to Human Cdc20 aa 1-300. Database link: Q12834
	 Run BLAST with  Run BLAST with
Positive control	NIH 3T3 and INS1 cell lysates; U2OS cells transfected with Cdc20.
General notes	<p>The Life Science industry has been in the grips of a reproducibility crisis for a number of years. Abcam is leading the way in addressing this with our range of recombinant monoclonal antibodies and knockout edited cell lines for gold-standard validation. Please check that this product meets your needs before purchasing.</p> <p>If you have any questions, special requirements or concerns, please send us an inquiry and/or contact our Support team ahead of purchase. Recommended alternatives for this product can be found below, along with publications, customer reviews and Q&As</p>

Properties

Form	Liquid
Storage instructions	Shipped at 4°C. Store at +4°C short term (1-2 weeks). Upon delivery aliquot. Store at -20°C long term. Avoid freeze / thaw cycle.
Storage buffer	Preservative: 0.05% Sodium azide
Purity	Whole antiserum
Clonality	Polyclonal
Isotype	IgG

Applications

The Abpromise guarantee Our **Abpromise guarantee** covers the use of ab183479 in the following tested applications.

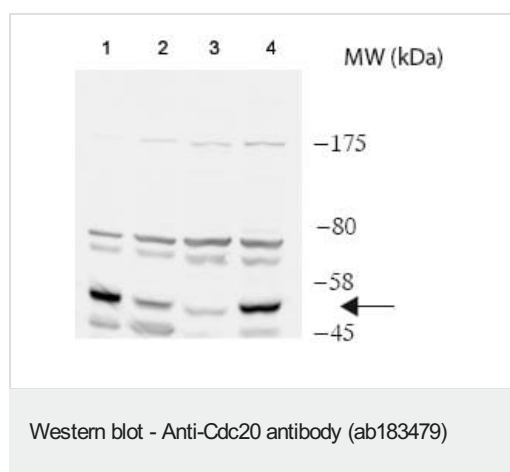
The application notes include recommended starting dilutions; optimal dilutions/concentrations should be determined by the end user.

Application	Abreviews	Notes
WB		1/2000. Predicted molecular weight: 55 kDa.
IP		Use at an assay dependent concentration.
ICC/IF		1/1000.

Target

Function	Required for full ubiquitin ligase activity of the anaphase promoting complex/cyclosome (APC/C) and may confer substrate specificity upon the complex. Is regulated by MAD2L1. In metaphase the MAD2L1-CDC20-APC/C ternary complex is inactive and in anaphase the CDC20-APC/C binary complex is active in degrading substrates.
Pathway	Protein modification; protein ubiquitination.
Sequence similarities	Belongs to the WD repeat CDC20/Fizzy family. Contains 7 WD repeats.
Developmental stage	Synthesis is initiated at G1/S, protein level peaks in M phase and protein is abruptly degraded at M/G1 transition.
Post-translational modifications	Phosphorylated during mitosis, probably by maturation promoting factor (MPF). Phosphorylated by BUB1 at Ser-41; Ser-72; Ser-92; Ser-153; Thr-157 and Ser-161. Ubiquitinated and degraded by the proteasome during spindle assembly checkpoint. Deubiquitinated by USP44, leading to stabilize the MAD2L1-CDC20-APC/C ternary complex, thereby preventing premature activation of the APC/C.

Images



All lanes : Anti-Cdc20 antibody (ab183479) at 1/2000 dilution

Lane 1 : U2OS cells transfected with control si RNA

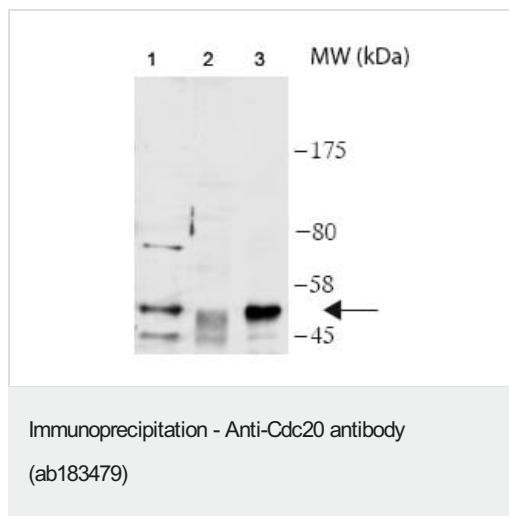
Lane 2 : U2OS cells transfected with Cdc20 si RNA

Lane 3 : Rat INS1 cell lysate

Lane 4 : Mouse NIH 3T3 cell lysate

Lysates/proteins at 40 µg per lane.

Predicted band size: 55 kDa

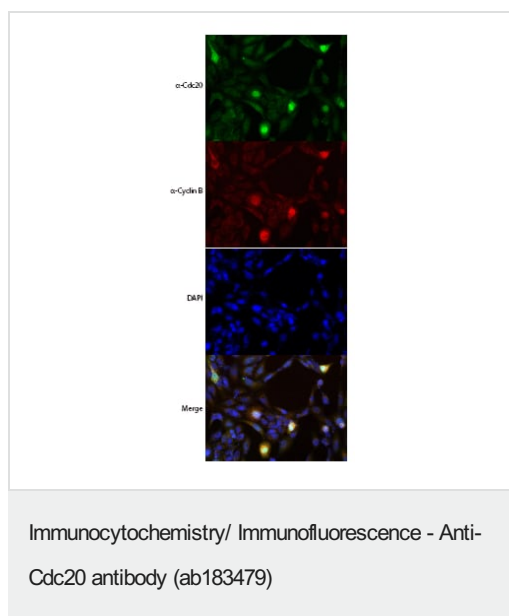


Western blot analysis of Immunoprecipitation using U2OS cells

Lane 1: Input.

Lane 2: control serum.

Lane 3: ab183479.



Immunofluorescent analysis of U2OS cells showing labeling of Cdc20 with ab183479 at 1/1000 dilution. Anti-Cyclin B labeling is seen in red and DAPI counterstain in blue. Lower image is merged.

Please note: All products are "FOR RESEARCH USE ONLY. NOT FOR USE IN DIAGNOSTIC PROCEDURES"

Our Abpromise to you: Quality guaranteed and expert technical support

- Replacement or refund for products not performing as stated on the datasheet
- Valid for 12 months from date of delivery
- Response to your inquiry within 24 hours
- We provide support in Chinese, English, French, German, Japanese and Spanish
- Extensive multi-media technical resources to help you
- We investigate all quality concerns to ensure our products perform to the highest standards

If the product does not perform as described on this datasheet, we will offer a refund or replacement. For full details of the Abpromise, please visit <https://www.abcam.com/abpromise> or contact our technical team.

Terms and conditions

- Guarantee only valid for products bought direct from Abcam or one of our authorized distributors