

Product datasheet

Anti-Cdc25B antibody [EPR3459(2)] ab124819

Recombinant RabMAb

[5 References](#) [3 Images](#)

Overview

Product name	Anti-Cdc25B antibody [EPR3459(2)]
Description	Rabbit monoclonal [EPR3459(2)] to Cdc25B
Host species	Rabbit
Tested applications	Suitable for: WB, IP Unsuitable for: Flow Cyt
Species reactivity	Reacts with: Mouse, Human
Immunogen	Synthetic peptide within Human Cdc25B aa 150-250. The exact sequence is proprietary.
Positive control	K562 cell lysate, U937 cell lysate and THP-1 cell lysate, mouse embryo E17 and NIH3T3 cell lysates
General notes	<p>This product is a recombinant monoclonal antibody, which offers several advantages including:</p> <ul style="list-style-type: none">- High batch-to-batch consistency and reproducibility- Improved sensitivity and specificity- Long-term security of supply- Animal-free production <p>For more information see here.</p> <p>Our RabMAb[®] technology is a patented hybridoma-based technology for making rabbit monoclonal antibodies. For details on our patents, please refer to RabMAb[®] patents.</p> <p>Mouse, Rat: We have preliminary internal testing data to indicate this antibody may not react with these species. Please contact us for more information.</p>

Properties

Form	Liquid
Storage instructions	Shipped at 4°C. Store at -20°C. Stable for 12 months at -20°C.
Storage buffer	pH: 7.2 Preservative: 0.05% Sodium azide Constituents: 0.1% BSA, 40% Glycerol (glycerin, glycerine), 9.85% Tris glycine, 50% Tissue culture supernatant
Purity	Protein A purified

Clonality	Monoclonal
Clone number	EPR3459(2)
Isotype	IgG

Applications

The Abpromise guarantee Our **Abpromise guarantee** covers the use of ab124819 in the following tested applications. The application notes include recommended starting dilutions; optimal dilutions/concentrations should be determined by the end user.

Application	Abreviews	Notes
WB		1/1000 - 1/10000. Detects a band of approximately 64 kDa (predicted molecular weight: 64 kDa).
IP		1/10 - 1/100.

Application notes Is unsuitable for Flow Cyt.

Target

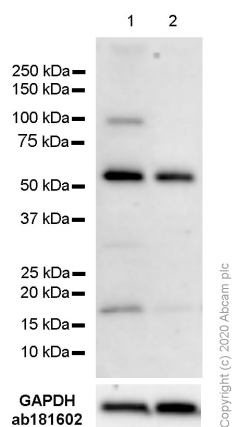
Function Tyrosine protein phosphatase which functions as a dosage-dependent inducer of mitotic progression. Required for G2/M phases of the cell cycle progression and abscission during cytokinesis in a ECT2-dependent manner. Directly dephosphorylates CDK1 and stimulates its kinase activity. The three isoforms seem to have a different level of activity.

Sequence similarities Belongs to the MPI phosphatase family.
Contains 1 rhodanese domain.

Post-translational modifications Phosphorylated by BRSK1 in vitro. Phosphorylated by CHEK1, which inhibits the activity of this protein. Phosphorylation at Ser-353 by AURKA might locally participate in the control of the onset of mitosis. Phosphorylation by MELK at Ser-169 promotes localization to the centrosome and the spindle poles during mitosis. Phosphorylation at Ser-323 and Ser-375 by MAPK14 is required for binding to 14-3-3 proteins.

Cellular localization Cytoplasm, cytoskeleton, microtubule organizing center, centrosome. Cytoplasm, cytoskeleton, spindle pole.

Images



Western blot - Anti-Cdc25B antibody [EPR3459(2)] (ab124819)

All lanes : Anti-Cdc25B antibody [EPR3459(2)] (ab124819) at 0.486 µg/ml

Lane 1 : NIH/3T3 (Mouse embryonic fibroblast) cell lysates

Lane 2 : Mouse embryo E17 lysates

Lysates/proteins at 20 µg per lane.

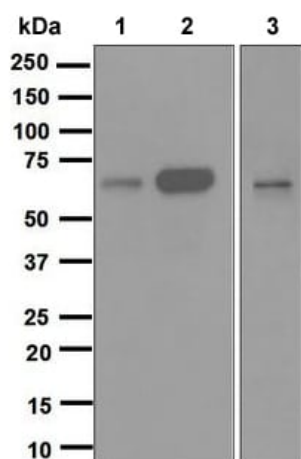
Secondary

All lanes : Goat Anti-Rabbit IgG H&L (HRP) (**ab97051**) at 0.05 µg/ml

Predicted band size: 64 kDa

Observed band size: 64 kDa

Blocking/diluting Buffer and concentration: 5% NFDm /TBST



Western blot - Anti-Cdc25B antibody [EPR3459(2)] (ab124819)

All lanes : Anti-Cdc25B antibody [EPR3459(2)] (ab124819) at 1/1000 dilution

Lane 1 : K562 cell lysate

Lane 2 : U937 cell lysate

Lane 3 : THP-1 cell lysate

Lysates/proteins at 10 µg per lane.

Secondary

All lanes : Goat-anti-rabbit HRP at 1/2000 dilution

Predicted band size: 64 kDa

Observed band size: 64 kDa

Why choose a recombinant antibody?



Research with confidence
Consistent and reproducible results



Long-term and scalable supply
Recombinant technology



Success from the first experiment
Confirmed specificity



Ethical standards compliant
Animal-free production

Anti-Cdc25B antibody [EPR3459(2)] (ab124819)

Please note: All products are "FOR RESEARCH USE ONLY. NOT FOR USE IN DIAGNOSTIC PROCEDURES"

Our Abpromise to you: Quality guaranteed and expert technical support

- Replacement or refund for products not performing as stated on the datasheet
- Valid for 12 months from date of delivery
- Response to your inquiry within 24 hours
- We provide support in Chinese, English, French, German, Japanese and Spanish
- Extensive multi-media technical resources to help you
- We investigate all quality concerns to ensure our products perform to the highest standards

If the product does not perform as described on this datasheet, we will offer a refund or replacement. For full details of the Abpromise, please visit <https://www.abcam.com/abpromise> or contact our technical team.

Terms and conditions

- Guarantee only valid for products bought direct from Abcam or one of our authorized distributors