


## Product datasheet

### Anti-CDC45L antibody [EPR5759] ab126762

Recombinant RabMAb

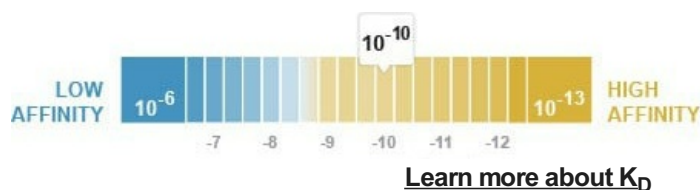
★★★★★ [1 Abreviews](#) [5 References](#) [5 Images](#)

#### Overview

Product name	Anti-CDC45L antibody [EPR5759]
Description	Rabbit monoclonal [EPR5759] to CDC45L
Host species	Rabbit
Tested applications	<b>Suitable for:</b> WB, IHC-P, ICC/IF <b>Unsuitable for:</b> IP
Species reactivity	<b>Reacts with:</b> Human <b>Predicted to work with:</b> Mouse, Rat 
Immunogen	Synthetic peptide within Human CDC45L aa 500-600. The exact sequence is proprietary.
Positive control	293T, Jurkat, and K562 cell lysates; Human colon tissue. This antibody gave a positive result when used in the following methanol fixed cell lines: HeLa
General notes	<p>This product is a recombinant monoclonal antibody, which offers several advantages including:</p> <ul style="list-style-type: none"> <li>- High batch-to-batch consistency and reproducibility</li> <li>- Improved sensitivity and specificity</li> <li>- Long-term security of supply</li> <li>- Animal-free production</li> </ul> <p>For more information <a href="#">see here</a>.</p> <p>Our RabMAb<sup>®</sup> technology is a patented hybridoma-based technology for making rabbit monoclonal antibodies. For details on our patents, please refer to <a href="#">RabMAb<sup>®</sup> patents</a>.</p>

#### Properties

Form	Liquid
Storage instructions	Shipped at 4°C. Store at -20°C. Stable for 12 months at -20°C.
Dissociation constant (K <sub>D</sub> )	K <sub>D</sub> = 1.86 x 10 <sup>-10</sup> M



<b>Storage buffer</b>	pH: 7.20 Preservative: 0.01% Sodium azide Constituents: 9% PBS, 40% Glycerol (glycerin, glycerine), 0.05% BSA, 50% Tissue culture supernatant
<b>Purity</b>	Protein A purified
<b>Clonality</b>	Monoclonal
<b>Clone number</b>	EPR5759
<b>Isotype</b>	IgG

## Applications

**The Abpromise guarantee** Our **Abpromise guarantee** covers the use of ab126762 in the following tested applications. The application notes include recommended starting dilutions; optimal dilutions/concentrations should be determined by the end user.

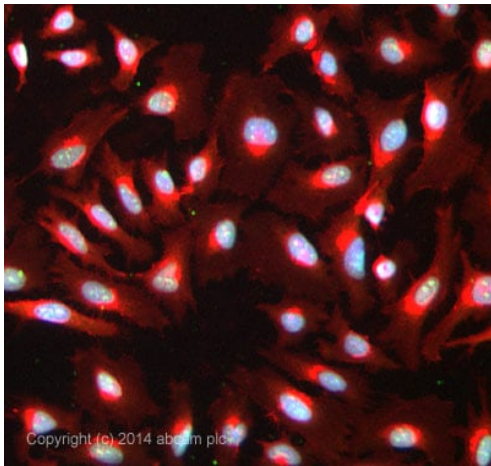
Application	Abreviews	Notes
<b>WB</b>		1/1000 - 1/10000. Predicted molecular weight: 66 kDa.
<b>IHC-P</b>		1/100 - 1/250. Perform heat mediated antigen retrieval before commencing with IHC staining protocol. (heat up to 98 degrees C, below boiling, and then let cool for 10-20 min.)
<b>ICC/IF</b>	★★★★★ (1)	1/100 - 1/250.

**Application notes** Is unsuitable for IP.

## Target

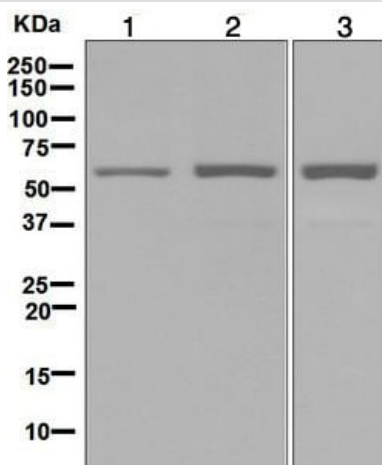
<b>Function</b>	Required for initiation of chromosomal DNA replication.
<b>Tissue specificity</b>	Widely expressed, highest levels are found in adult testis and thymus and in fetal liver.
<b>Sequence similarities</b>	Belongs to the CDC45 family.
<b>Developmental stage</b>	Transcript peaks at G1-S transition, but total protein remains constant throughout the cell cycle. Expressed in multiple tissues during embryogenesis, including neural crest-derived structures.
<b>Cellular localization</b>	Cytoplasm. Nucleus.

## Images



Immunocytochemistry/ Immunofluorescence - Anti-CDC45L antibody [EPR5759] (ab126762)

ICC/IF image of ab126762 stained HeLa cells. The cells were 100% methanol fixed (5 min) and then incubated in 1%BSA / 10% normal goat serum / 0.3M glycine in 0.1% PBS-Tween for 1h to permeabilise the cells and block non-specific protein-protein interactions. The cells were then incubated with the antibody ab126762 at 1/100 dilution overnight at +4°C. The secondary antibody (pseudo-colored green) was Alexa Fluor® 488 goat anti-rabbit (**ab150081**) IgG (H+L) preadsorbed, used at a 1/1000 dilution for 1h. Alexa Fluor® 594 WGA was used to label plasma membranes (pseudo-colored red) at a 1/200 dilution for 1h at room temperature. DAPI was used to stain the cell nuclei (pseudo-colored blue) at a concentration of 1.43µM for 1hour at room temperature.



Western blot - Anti-CDC45L antibody [EPR5759] (ab126762)

**All lanes** : Anti-CDC45L antibody [EPR5759] (ab126762) at 1/1000 dilution

**Lane 1** : 293T cell lysate

**Lane 2** : Jurkat cell lysate

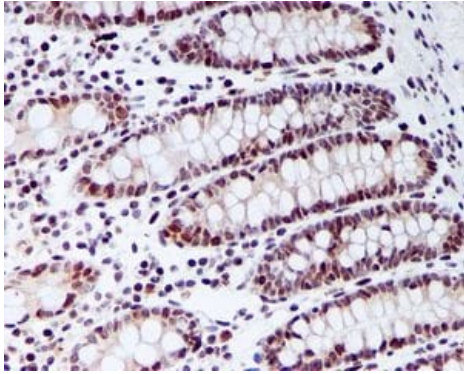
**Lane 3** : K562 cell lysate

Lysates/proteins at 10 µg per lane.

#### Secondary

**All lanes** : HRP-conjugated goat anti-rabbit at 1/2000 dilution

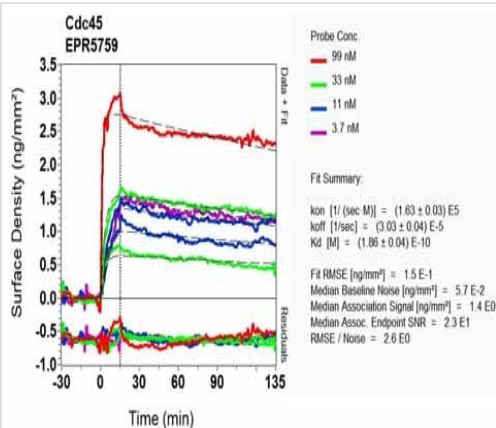
**Predicted band size:** 66 kDa



Immunohistochemistry (Formalin/PFA-fixed paraffin-embedded sections) - Anti-CDC45L antibody  
[EPR5759] (ab126762)

ab126762, at 1/100 dilution, staining CDC45L in paraffin-embedded Human colon tissue by Immunohistochemistry.

Perform heat mediated antigen retrieval before commencing with IHC staining protocol.



OI-RD Scanning - Anti-CDC45L antibody [EPR5759]  
(ab126762)

Equilibrium disassociation constant ( $K_D$ )

Learn more about  $K_D$

[Click here to learn more about  \$K\_D\$](#)

### Why choose a recombinant antibody?



**Research with confidence**  
Consistent and reproducible results



**Long-term and scalable supply**  
Recombinant technology



**Success from the first experiment**  
Confirmed specificity



**Ethical standards compliant**  
Animal-free production

Anti-CDC45L antibody [EPR5759] (ab126762)

**Please note:** All products are "FOR RESEARCH USE ONLY. NOT FOR USE IN DIAGNOSTIC PROCEDURES"

### Our Abpromise to you: Quality guaranteed and expert technical support

---

- Replacement or refund for products not performing as stated on the datasheet
- Valid for 12 months from date of delivery
- Response to your inquiry within 24 hours
- We provide support in Chinese, English, French, German, Japanese and Spanish
- Extensive multi-media technical resources to help you
- We investigate all quality concerns to ensure our products perform to the highest standards

If the product does not perform as described on this datasheet, we will offer a refund or replacement. For full details of the Abpromise, please visit <https://www.abcam.com/abpromise> or contact our technical team.

### Terms and conditions

---

- Guarantee only valid for products bought direct from Abcam or one of our authorized distributors