

Product datasheet

Anti-Cdc6 antibody [EPR714(2)] ab109315

Recombinant RabMAb

★★★★☆ [2 Abreviews](#) [16 References](#) [7 Images](#)

Overview

Product name	Anti-Cdc6 antibody [EPR714(2)]
Description	Rabbit monoclonal [EPR714(2)] to Cdc6
Host species	Rabbit
Tested applications	Suitable for: ICC/IF, WB, IHC-P Unsuitable for: Flow Cyt (Intra)
Species reactivity	Reacts with: Human
Immunogen	Synthetic peptide. This information is proprietary to Abcam and/or its suppliers.
Positive control	WB: HeLa, 293T, HCT116 treated with hydroxyurea and Raji treated with FBS lysates IHC-P: Human gastric adenocarcinoma, breast carcinoma, thyroid cancer tissue ICC/IF: HeLa
General notes	<p>This product is a recombinant monoclonal antibody, which offers several advantages including:</p> <ul style="list-style-type: none"> - High batch-to-batch consistency and reproducibility - Improved sensitivity and specificity - Long-term security of supply - Animal-free production <p>For more information see here.</p> <p>Our RabMAb[®] technology is a patented hybridoma-based technology for making rabbit monoclonal antibodies. For details on our patents, please refer to RabMAb[®] patents.</p> <p>Mouse: We have preliminary internal testing data to indicate this antibody may not react with this species. Please contact us for more information.</p>

Properties

Form	Liquid
Storage instructions	Shipped at 4°C. Store at +4°C short term (1-2 weeks). Upon delivery aliquot. Store at -20°C long term. Avoid freeze / thaw cycle.
Storage buffer	pH: 7.20 Preservative: 0.01% Sodium azide Constituents: 59% PBS, 40% Glycerol (glycerin, glycerine), 0.5% BSA
Purity	Protein A purified

Clonality	Monoclonal
Clone number	EPR714(2)
Isotype	IgG

Applications

The Abpromise guarantee Our **Abpromise guarantee** covers the use of ab109315 in the following tested applications. The application notes include recommended starting dilutions; optimal dilutions/concentrations should be determined by the end user.

Application	Abreviews	Notes
ICC/IF	★★★★★ (2)	1/100. For unpurified use at 1/250 - 1/500
WB		1/1000 - 1/10000. Detects a band of approximately 62 kDa (predicted molecular weight: 63 kDa).
IHC-P		1/90. Perform heat mediated antigen retrieval with Tris/EDTA buffer pH 9.0 before commencing with IHC staining protocol. See <u>IHC antigen retrieval protocols</u> .

Application notes Is unsuitable for Flow Cyt (Intra).

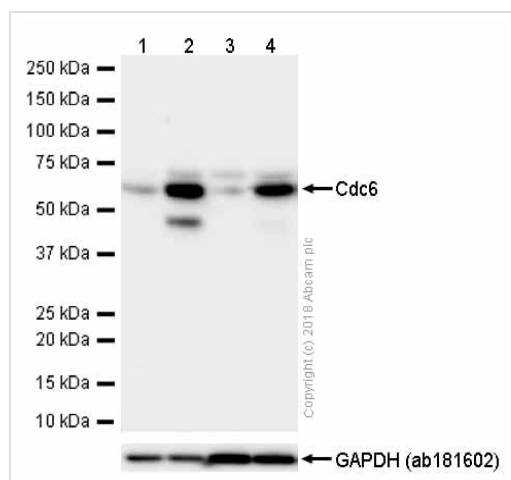
Target

Function Involved in the initiation of DNA replication. Also participates in checkpoint controls that ensure DNA replication is completed before mitosis is initiated.

Sequence similarities Belongs to the CDC6/cdc18 family.

Cellular localization Nucleus. Cytoplasm. The protein is nuclear in G1 and cytoplasmic in S-phase cells.

Images



Western blot - Anti-Cdc6 antibody [EPR714(2)] (ab109315)

All lanes : Anti-Cdc6 antibody [EPR714(2)] (ab109315) at 0.5 µg/ml (purified)

Lane 1 : 293T (Human embryonic kidney epithelial cell) whole cell lysates

Lane 2 : 293T (Human embryonic kidney epithelial cell) treated with 20mM Hydroxyurea for 24 hours whole cell lysates

Lane 3 : HCT116 (Human colorectal carcinoma epithelial cell) whole cell lysates

Lane 4 : HCT116 (Human colorectal carcinoma epithelial cell) treated with 1mM Hydroxyurea for 16 hours whole cell lysates

Lysates/proteins at 15 µg per lane.

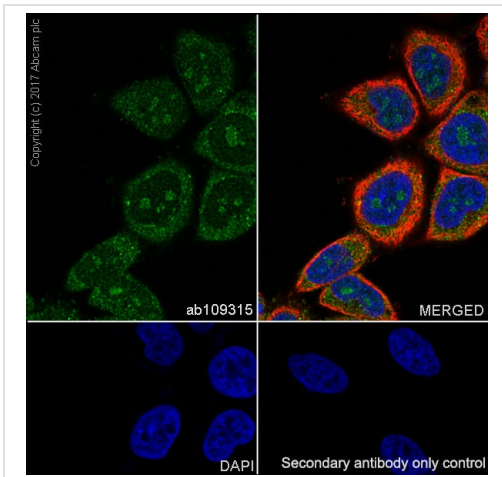
Secondary

All lanes : Goat Anti-Rabbit IgG H&L (HRP) (**ab97051**) at 1/20000 dilution

Predicted band size: 63 kDa

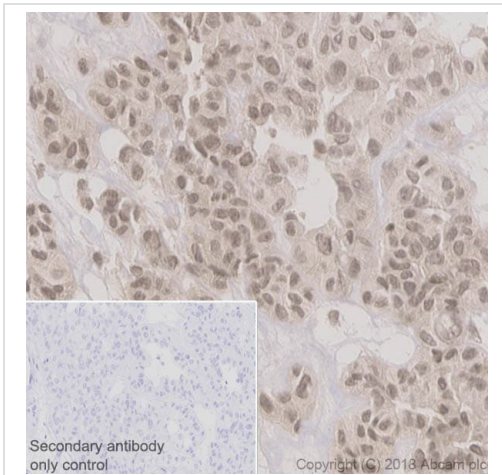
Blocking and diluting buffer: 5% NFDm/TBST.

Hydroxyurea induces Cdc6 expression (PMID:11346650)



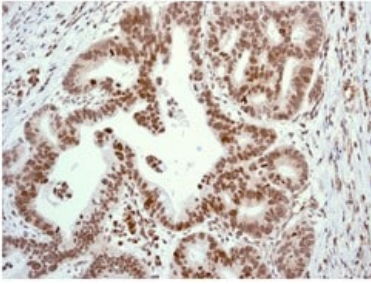
Immunocytochemistry/ Immunofluorescence - Anti-Cdc6 antibody [EPR714(2)] (ab109315)

Immunocytochemistry/ Immunofluorescence analysis of HeLa (Human cervix adenocarcinoma epithelial cell) cells labeling Cdc6 with Purified ab109315 at 1:100 dilution (9.4 µg/ml). Cells were fixed in 4% Paraformaldehyde and permeabilized with 0.1% tritonX-100. Cells were counterstained with Ab195889 Anti-alpha Tubulin antibody [DM1A] - Microtubule Marker (Alexa Fluor®594) 1:200 (2.5 µg/ml). Goat anti rabbit IgG (Alexa Fluor®488, **ab150077**) was used as the secondary antibody at 1:1000 (2 µg/ml) dilution. DAPI nuclear counterstain. PBS instead of the primary antibody was used as the secondary antibody only control.



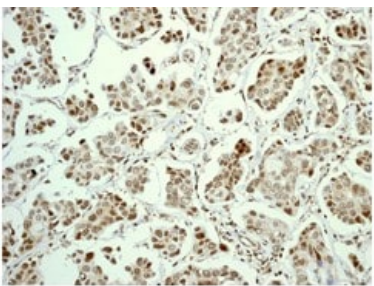
Immunohistochemistry (Formalin/PFA-fixed paraffin-embedded sections) - Anti-Cdc6 antibody [EPR714(2)] (ab109315)

Immunohistochemistry (Formalin/PFA-fixed paraffin-embedded sections) analysis of Human thyroid cancer tissue sections labeling Cdc6 with Purified ab109315 at 1:90 dilution (10.4 µg/ml). Heat mediated antigen retrieval was performed using using **ab93684** (Tris/EDTA buffer, pH 9.0)ImmunoHistoProbe one step HRP Polymer (ready to use)was used as the secondary antibody.Negative control:PBS instead of the primary antibody.Hematoxylinwas used as a counterstain



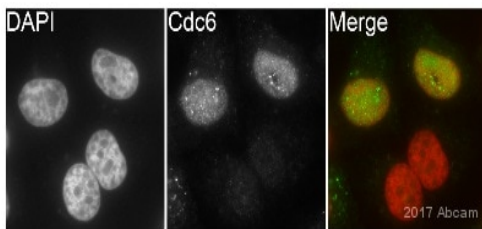
Immunohistochemical analysis of Cdc6 in paraffin embedded Human gastric adenocarcinoma tissue, using unpurified ab109315 at a 1/1000 dilution.

Immunohistochemistry (Formalin/PFA-fixed paraffin-embedded sections) - Anti-Cdc6 antibody [EPR714(2)] (ab109315)



Immunohistochemical analysis of Cdc6 in paraffin embedded Human breast carcinoma tissue, using unpurified ab109315 at a 1/1000 dilution.

Immunohistochemistry (Formalin/PFA-fixed paraffin-embedded sections) - Anti-Cdc6 antibody [EPR714(2)] (ab109315)







Unpurified ab109315 staining Cdc6 in the HeLa cell line from Human cervix by ICC/IF (Immunocytochemistry/immunofluorescence). Cells were fixed with paraformaldehyde, permeabilized with 0.5% Triton X-100. Samples were incubated with primary antibody (1/500 in PBS) for 1 hour at 22°C. Ab150081 (1/200) was used as the secondary antibody.

Immunocytochemistry/ Immunofluorescence - Anti-Cdc6 antibody [EPR714(2)] (ab109315)

This image is courtesy of an abreview by Kirk Mcmanus

Why choose a recombinant antibody?

 Research with confidence Consistent and reproducible results	 Long-term and scalable supply Recombinant technology
 Success from the first experiment Confirmed specificity	 Ethical standards compliant Animal-free production

Anti-Cdc6 antibody [EPR714(2)] (ab109315)

Please note: All products are "FOR RESEARCH USE ONLY. NOT FOR USE IN DIAGNOSTIC PROCEDURES"

Our Abpromise to you: Quality guaranteed and expert technical support

- Replacement or refund for products not performing as stated on the datasheet
- Valid for 12 months from date of delivery
- Response to your inquiry within 24 hours
- We provide support in Chinese, English, French, German, Japanese and Spanish
- Extensive multi-media technical resources to help you
- We investigate all quality concerns to ensure our products perform to the highest standards

If the product does not perform as described on this datasheet, we will offer a refund or replacement. For full details of the Abpromise, please visit <https://www.abcam.com/abpromise> or contact our technical team.

Terms and conditions

- Guarantee only valid for products bought direct from Abcam or one of our authorized distributors