

## Product datasheet

# Anti-Cdc6 antibody - N-terminal ab188423

★★★★★ [2 Abreviews](#) [1 References](#) [4 Images](#)

### Overview

---

<b>Product name</b>	Anti-Cdc6 antibody - N-terminal
<b>Description</b>	Rabbit polyclonal to Cdc6 - N-terminal
<b>Host species</b>	Rabbit
<b>Tested applications</b>	<b>Suitable for:</b> ICC/IF, WB, IP
<b>Species reactivity</b>	<b>Reacts with:</b> Mouse, Human
<b>Immunogen</b>	Recombinant fragment (proprietary-tag) corresponding to Human Cdc6 aa 1-350 (N terminal). (Expressed in E. coli). Database link: <a href="#">Q99741</a>

 [Run BLAST with](#)

 [Run BLAST with](#)

**Positive control** HeLa whole cell lysate ([ab150035](#)); HeLa cells.

**General notes** The Life Science industry has been in the grips of a reproducibility crisis for a number of years. Abcam is leading the way in addressing this with our range of recombinant monoclonal antibodies and knockout edited cell lines for gold-standard validation. Please check that this product meets your needs before purchasing.

If you have any questions, special requirements or concerns, please send us an inquiry and/or contact our Support team ahead of purchase. Recommended alternatives for this product can be found below, along with publications, customer reviews and Q&As

### Properties

---

<b>Form</b>	Liquid
<b>Storage instructions</b>	Shipped at 4°C. Store at +4°C short term (1-2 weeks). Upon delivery aliquot. Store at -20°C long term. Avoid freeze / thaw cycle.
<b>Storage buffer</b>	pH: 6 Constituents: 50% Glycerol (glycerin, glycerine), PBS
<b>Purity</b>	Immunogen affinity purified
<b>Clonality</b>	Polyclonal
<b>Isotype</b>	IgG

### Applications

---

## The Abpromise guarantee

Our **Abpromise guarantee** covers the use of ab188423 in the following tested applications.

The application notes include recommended starting dilutions; optimal dilutions/concentrations should be determined by the end user.

Application	Abreviews	Notes
ICC/IF	★★★★★ (1)	1/100 - 1/1000.
WB		1/1000 - 1/3000. Predicted molecular weight: 63 kDa.
IP		Use at an assay dependent concentration.

## Target

### Function

Involved in the initiation of DNA replication. Also participates in checkpoint controls that ensure DNA replication is completed before mitosis is initiated.

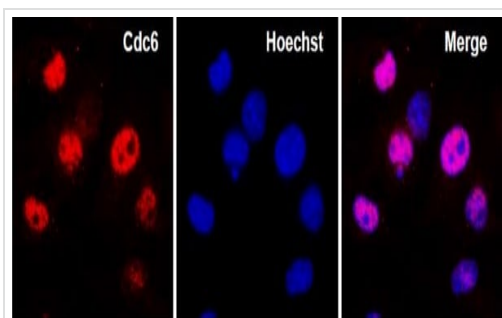
### Sequence similarities

Belongs to the CDC6/cdc18 family.

### Cellular localization

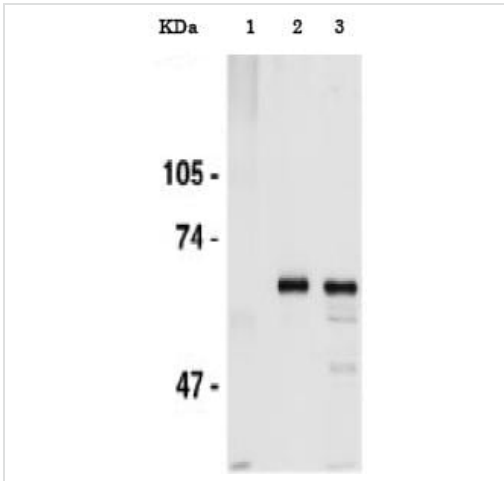
Nucleus. Cytoplasm. The protein is nuclear in G1 and cytoplasmic in S-phase cells.

## Images



Immunocytochemistry/ Immunofluorescence - Anti-Cdc6 antibody - N-terminal (ab188423)

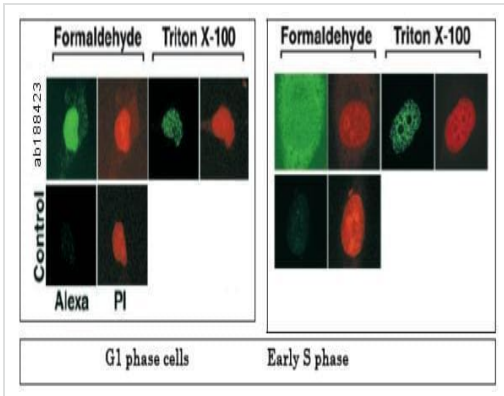
Immunocytochemistry/ Immunofluorescence analysis of MEFs (mouse embryonic fibroblasts) from embryonic day 14.5 mouse embryos labeling Cdc6 with ab188423 at 1/200 dilution. The cells were fixed with 10 % formalin at room temperature (RT) for 10 min, permeabilized with ice-cold methanol on ice for 10 min, and treated with 2 % BSA/PBS at RT for 1h. Cells were incubated with Anti-Cdc6 antibody - N-terminal (ab188423) at 4°C overnight and then with Alexa Fluor 555-conjugated goat anti-rabbit IgG antibody (1/1000) at RT for 1h. Chromosomal DNA was counterstained with 3.3  $\mu$ M Hoechst 33342. Note that CDC6 abundantly localizes in nuclei of the cells at G1 and early S phase.



Immunoprecipitation - Anti-Cdc6 antibody - N-terminal (ab188423)

Immunoprecipitation analysis of HeLa whole cell lysate.  
 Lane 1: Control immunoprecipitation with non-immune IgG  
 Lane 2: Immunoprecipitates with ab188423  
 Lane 3: Input.

Western blot detection with ab188423 at 1/1000 dilution.



Immunocytochemistry/ Immunofluorescence - Anti-Cdc6 antibody - N-terminal (ab188423)

Immunofluorescent analysis of HeLa cells in G1 or early S phase. Cells in mid to late G1 phase or hydroxyurea-treated early S phase were fixed with formaldehyde directly or after extraction with Triton X-100 and then immunostained using ab188423 at 1/100 dilution or control non-immune antibody (Alexa;green). The samples were further treated with propidium iodide for DNA staining (PI; red).



Western blot - Anti-Cdc6 antibody - N-terminal (ab188423)

Anti-Cdc6 antibody - N-terminal (ab188423) at 1/1000 dilution + HeLa cell lysate at 10 µg

**Predicted band size: 63 kDa**

## **Our Abpromise to you: Quality guaranteed and expert technical support**

---

- Replacement or refund for products not performing as stated on the datasheet
- Valid for 12 months from date of delivery
- Response to your inquiry within 24 hours
  
- We provide support in Chinese, English, French, German, Japanese and Spanish
- Extensive multi-media technical resources to help you
- We investigate all quality concerns to ensure our products perform to the highest standards

If the product does not perform as described on this datasheet, we will offer a refund or replacement. For full details of the Abpromise, please visit <https://www.abcam.com/abpromise> or contact our technical team.

## **Terms and conditions**

---

- Guarantee only valid for products bought direct from Abcam or one of our authorized distributors