

## Product datasheet

# Anti-CDCA3 antibody - C-terminal ab167037

[4 References](#) [2 Images](#)

### Overview

---

<b>Product name</b>	Anti-CDCA3 antibody - C-terminal
<b>Description</b>	Rabbit polyclonal to CDCA3 - C-terminal
<b>Host species</b>	Rabbit
<b>Tested applications</b>	<b>Suitable for:</b> WB, IHC-P
<b>Species reactivity</b>	<b>Reacts with:</b> Human
<b>Immunogen</b>	Synthetic peptide. This information is proprietary to Abcam and/or its suppliers.
<b>Positive control</b>	Human placenta tissue; HepG2 cell extract.
<b>General notes</b>	<p>The Life Science industry has been in the grips of a reproducibility crisis for a number of years. Abcam is leading the way in addressing this with our range of recombinant monoclonal antibodies and knockout edited cell lines for gold-standard validation. Please check that this product meets your needs before purchasing.</p> <p>If you have any questions, special requirements or concerns, please send us an inquiry and/or contact our Support team ahead of purchase. Recommended alternatives for this product can be found below, along with publications, customer reviews and Q&amp;As</p>

### Properties

---

<b>Form</b>	Liquid
<b>Storage instructions</b>	Shipped at 4°C. Store at -20°C.
<b>Storage buffer</b>	pH: 7.40 Preservative: 0.02% Sodium azide Constituents: 49% PBS, 50% Glycerol (glycerin, glycerine), 0.88% Sodium chloride
<b>Purity</b>	PBS without Mg <sup>2+</sup> and Ca <sup>2+</sup> .
<b>Clonality</b>	Immunogen affinity purified
<b>Isotype</b>	Polyclonal
<b>Isotype</b>	IgG

### Applications

---

## The Abpromise guarantee

Our **Abpromise guarantee** covers the use of ab167037 in the following tested applications.

The application notes include recommended starting dilutions; optimal dilutions/concentrations should be determined by the end user.

Application	Abreviews	Notes
WB		1/500 - 1/1000. Predicted molecular weight: 29 kDa.
IHC-P		Use a concentration of 5 µg/ml.

## Target

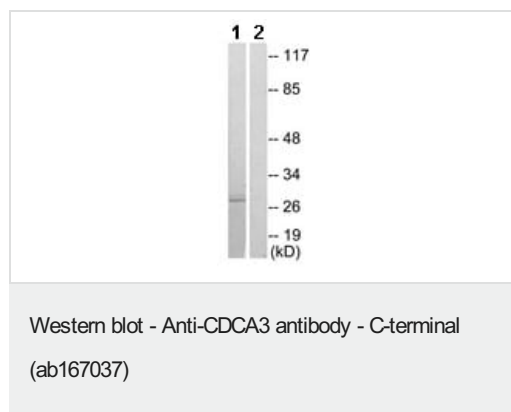
### Relevance

CDCA3 (Cell division cycle associated 3) is an F-box-like protein which is required for entry into mitosis. It is associated with SKP1 as part of a SCF (SKP1-cullin-F-box) protein ligase complex, and is required for the ubiquitination and degradation of the CDK1 inhibitory tyrosine kinase WEE1 at G2/M phase.

### Cellular localization

Cytoplasmic. Cytosol.

## Images

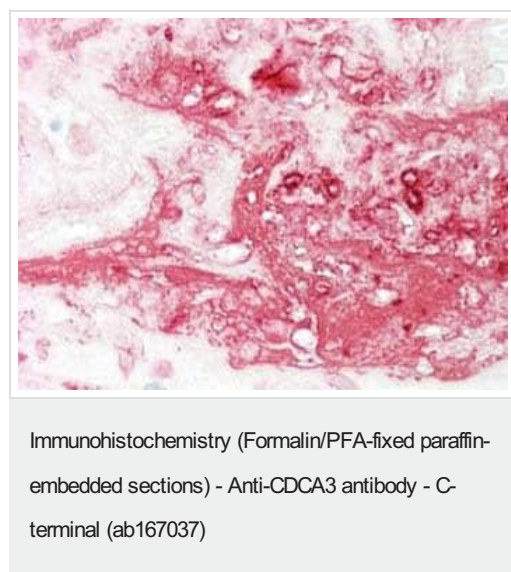


**All lanes :** Anti-CDCA3 antibody - C-terminal (ab167037) at 1/500 dilution

**Lane 1 :** HepG2 cell extract

**Lane 2 :** HepG2 cell extract with immunizing peptide

**Predicted band size:** 29 kDa



Immunohistochemical analysis of formalin-fixed, paraffin-embedded Human placenta tissue labeling CDCA3 with ab167037 at 5 µg/ml.

## **Our Abpromise to you: Quality guaranteed and expert technical support**

---

- Replacement or refund for products not performing as stated on the datasheet
- Valid for 12 months from date of delivery
- Response to your inquiry within 24 hours
  
- We provide support in Chinese, English, French, German, Japanese and Spanish
- Extensive multi-media technical resources to help you
- We investigate all quality concerns to ensure our products perform to the highest standards

If the product does not perform as described on this datasheet, we will offer a refund or replacement. For full details of the Abpromise, please visit <https://www.abcam.com/abpromise> or contact our technical team.

## **Terms and conditions**

---

- Guarantee only valid for products bought direct from Abcam or one of our authorized distributors