

Product datasheet

Anti-CDK1 (phospho T161) antibody ab47329

★ ★ ★ ★ ★ [2 Abreviews](#) [6 References](#) [2 Images](#)

Overview

Product name	Anti-CDK1 (phospho T161) antibody
Description	Rabbit polyclonal to CDK1 (phospho T161)
Host species	Rabbit
Tested applications	Suitable for: WB, IHC-P
Species reactivity	Reacts with: Human
Immunogen	Synthetic peptide corresponding to Human CDK1 aa 100-200 (phospho T161). Database link: P06493
Positive control	WB: COLO, K362 cell extract. IHC-P: Human breast carcinoma tissue.
General notes	<p>This antibody detects CDC2 only when phosphorylated at Threonine 161.</p> <p>The Life Science industry has been in the grips of a reproducibility crisis for a number of years. Abcam is leading the way in addressing this with our range of recombinant monoclonal antibodies and knockout edited cell lines for gold-standard validation. Please check that this product meets your needs before purchasing.</p> <p>If you have any questions, special requirements or concerns, please send us an inquiry and/or contact our Support team ahead of purchase. Recommended alternatives for this product can be found below, along with publications, customer reviews and Q&As</p>

Properties

Form	Liquid
Storage instructions	Shipped at 4°C. Store at -20°C. Stable for 12 months at -20°C.
Storage buffer	pH: 7.40 Preservative: 0.02% Sodium azide Constituents: PBS, 50% Glycerol, 0.87% Sodium chloride
Purity	Immunogen affinity purified
Purification notes	The antibody was affinity-purified using epitope-specific phosphopeptide. The antibody against non-phosphopeptide was removed by chromatography using non-phosphopeptide corresponding to the phosphorylation site.
Primary antibody notes	This antibody detects CDC2 only when phosphorylated at Threonine 161.

Clonality	Polyclonal
Isotype	IgG

Applications

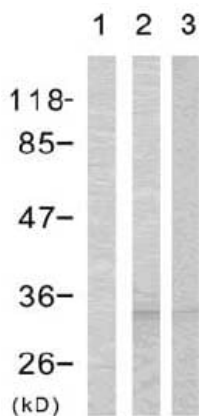
The Abpromise guarantee Our **Abpromise guarantee** covers the use of ab47329 in the following tested applications. The application notes include recommended starting dilutions; optimal dilutions/concentrations should be determined by the end user.

Application	Abreviews	Notes
WB	★★★★☆ (1)	1/500 - 1/1000. Detects a band of approximately 34 kDa (predicted molecular weight: 34 kDa).
IHC-P		Use at an assay dependent concentration.

Target

Function	Plays a key role in the control of the eukaryotic cell cycle. It is required in higher cells for entry into S-phase and mitosis. p34 is a component of the kinase complex that phosphorylates the repetitive C-terminus of RNA polymerase II.
Tissue specificity	Isoform 2 is found in breast cancer tissues.
Sequence similarities	Belongs to the protein kinase superfamily. CMGC Ser/Thr protein kinase family. CDC2/CDKX subfamily. Contains 1 protein kinase domain.
Cellular localization	Nucleus.
Form	CDK1 can be located to the Nucleus, cytoplasm and Mitochondria. It's cytoplasmic during interphase and reversibly translocated from cytoplasm to the nucleus when phosphorylated before G2-M transition when associated with cyclin-B1. Accumulates in mitochondria in G2-arrested cells upon DNA-damage.

Images



Western blot - Anti-CDK1 (phospho T161) antibody (ab47329)

All lanes : Anti-CDK1 (phospho T161) antibody (ab47329) at 1/500 dilution

Lane 1 : COLO cell extract preincubated with immunogenic phospho-peptide. with phosphopeptide at 1 µg/ml

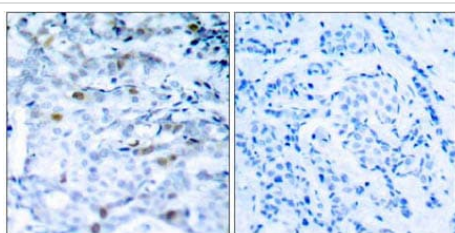
Lane 2 : COLO cell extract, untreated.

Lane 3 : K362 cell extract

Lysates/proteins at 30 µg per lane.

Predicted band size: 34 kDa

Observed band size: 34 kDa



Immunohistochemistry (Formalin/PFA-fixed paraffin-embedded sections) - Anti-CDK1 (phospho T161) antibody (ab47329)

ab47329 staining human breast carcinoma tissue by IHC-P (left hand panel). The right hand panel shows staining in the presence of synthesized phospho-peptide using Alkaline phosphatase Goat anti rabbit IgG (H+L) secondary antibody.

Please note: All products are "FOR RESEARCH USE ONLY. NOT FOR USE IN DIAGNOSTIC PROCEDURES"

Our Abpromise to you: Quality guaranteed and expert technical support

- Replacement or refund for products not performing as stated on the datasheet
- Valid for 12 months from date of delivery
- Response to your inquiry within 24 hours
- We provide support in Chinese, English, French, German, Japanese and Spanish
- Extensive multi-media technical resources to help you
- We investigate all quality concerns to ensure our products perform to the highest standards

If the product does not perform as described on this datasheet, we will offer a refund or replacement. For full details of the Abpromise, please visit <https://www.abcam.com/abpromise> or contact our technical team.

Terms and conditions

- Guarantee only valid for products bought direct from Abcam or one of our authorized distributors