

Product datasheet

Anti-CDK1 (phospho Y15) antibody ab47594

★★★★★ [2 Abreviews](#) [38 References](#) [3 Images](#)

Overview

Product name	Anti-CDK1 (phospho Y15) antibody
Description	Rabbit polyclonal to CDK1 (phospho Y15)
Host species	Rabbit
Tested applications	Suitable for: WB
Species reactivity	Reacts with: Human, African green monkey
Immunogen	Synthetic peptide corresponding to Human CDK1 aa 1-100 (phospho Y15). Database link: P06493
General notes	<p>The Life Science industry has been in the grips of a reproducibility crisis for a number of years. Abcam is leading the way in addressing this with our range of recombinant monoclonal antibodies and knockout edited cell lines for gold-standard validation. Please check that this product meets your needs before purchasing.</p> <p>If you have any questions, special requirements or concerns, please send us an inquiry and/or contact our Support team ahead of purchase. Recommended alternatives for this product can be found below, along with publications, customer reviews and Q&As</p>

Properties

Form	Liquid
Storage instructions	Shipped at 4°C. Upon delivery aliquot and store at -20°C. Avoid freeze / thaw cycles.
Storage buffer	pH: 7.40 Preservative: 0.02% Sodium azide Constituents: PBS, 50% Glycerol (glycerin, glycerine), 0.87% Sodium chloride
Purity	Immunogen affinity purified
Purification notes	The antibody was affinity purified from rabbit antiserum by affinity chromatography using epitope specific phosphopeptide. The antibody against non phosphopeptide was removed by chromatography using non phosphopeptide corresponding to the phosphorylation site.
Clonality	Polyclonal
Isotype	IgG

Applications

The Abpromise guarantee

Our **Abpromise guarantee** covers the use of ab47594 in the following tested applications.

The application notes include recommended starting dilutions; optimal dilutions/concentrations should be determined by the end user.

Application	Abreviews	Notes
WB	★★★★★ (1)	1/500 - 1/1000. Detects a band of approximately 35 kDa (predicted molecular weight: 34 kDa).

Target

Function

Plays a key role in the control of the eukaryotic cell cycle. It is required in higher cells for entry into S-phase and mitosis. p34 is a component of the kinase complex that phosphorylates the repetitive C-terminus of RNA polymerase II.

Tissue specificity

Isoform 2 is found in breast cancer tissues.

Sequence similarities

Belongs to the protein kinase superfamily. CMGC Ser/Thr protein kinase family. CDC2/CDKX subfamily.

Contains 1 protein kinase domain.

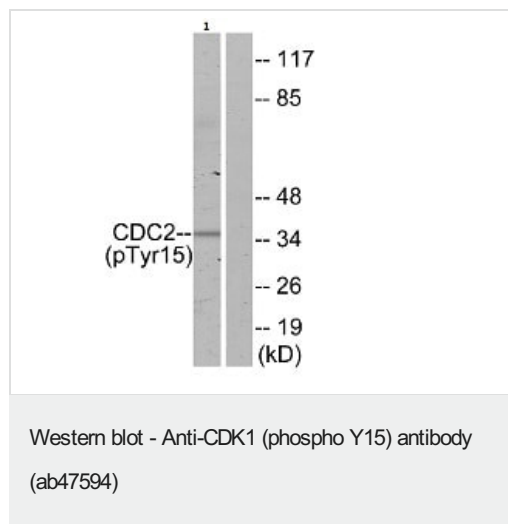
Cellular localization

Nucleus.

Form

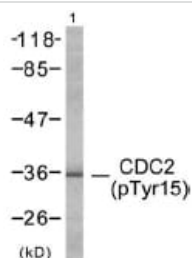
CDK1 can be located to the Nucleus, cytoplasm and Mitochondria. It's cytoplasmic during interphase and reversibly translocated from cytoplasm to the nucleus when phosphorylated before G2-M transition when associated with cyclin-B1. Accumulates in mitochondria in G2-arrested cells upon DNA-damage.

Images



Anti-CDK1 (phospho Y15) antibody (ab47594) at 1/500 dilution + COS-7 cells (African green monkey kidney fibroblast-like)

Predicted band size: 34 kDa

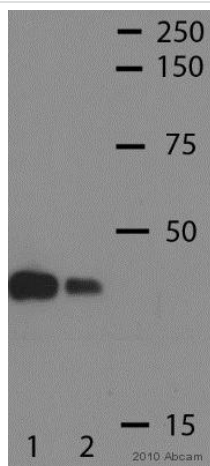


Western blot - Anti-CDK1 (phospho Y15) antibody (ab47594)

Anti-CDK1 (phospho Y15) antibody (ab47594) at 1/500 dilution + HepG2 cell extract

Predicted band size: 34 kDa

Observed band size: 35 kDa



Western blot - Anti-CDK1 (phospho Y15) antibody (ab47594)

This image is courtesy of an anonymous abreview.

All lanes : Anti-CDK1 (phospho Y15) antibody (ab47594) at 1/1000 dilution

Lane 1 : untreated HeLa cell lysate

Lane 2 : HeLa cell lysate treated with nocodazole (500ng/mL) for 16 h

Lysates/proteins at 20 µg per lane.

Secondary

All lanes : polyclonal goat HRP conjugated at 1/2000 dilution

Developed using the ECL technique.

Predicted band size: 34 kDa

Observed band size: 34 kDa

Exposure time: 1 minute

Blocking: 5% milk for 1 hour at 25°C.

Please note: All products are "FOR RESEARCH USE ONLY. NOT FOR USE IN DIAGNOSTIC PROCEDURES"

Our Abpromise to you: Quality guaranteed and expert technical support

- Replacement or refund for products not performing as stated on the datasheet
- Valid for 12 months from date of delivery
- Response to your inquiry within 24 hours
- We provide support in Chinese, English, French, German, Japanese and Spanish
- Extensive multi-media technical resources to help you

- We investigate all quality concerns to ensure our products perform to the highest standards

If the product does not perform as described on this datasheet, we will offer a refund or replacement. For full details of the Abpromise, please visit <https://www.abcam.com/abpromise> or contact our technical team.

Terms and conditions

- Guarantee only valid for products bought direct from Abcam or one of our authorized distributors