


Product datasheet

Anti-CDK11/CDC2L2/CDK11A antibody ab19393

★★★★★ [5 Abreviews](#) [7 References](#) [3 Images](#)

Overview

Product name	Anti-CDK11/CDC2L2/CDK11A antibody
Description	Rabbit polyclonal to CDK11/CDC2L2/CDK11A
Host species	Rabbit
Tested applications	Suitable for: ICC/IF, WB, IHC-P, IP
Species reactivity	Reacts with: Mouse, Human Predicted to work with: Rat, Rabbit, Horse, Chicken, Guinea pig, Cow, Dog, Turkey, Pig, Xenopus laevis, Rhesus monkey, Gorilla, Orangutan, Xenopus tropicalis 
Immunogen	Synthetic peptide. This information is proprietary to Abcam and/or its suppliers.
General notes	<p>The Life Science industry has been in the grips of a reproducibility crisis for a number of years. Abcam is leading the way in addressing this with our range of recombinant monoclonal antibodies and knockout edited cell lines for gold-standard validation. Please check that this product meets your needs before purchasing.</p> <p>If you have any questions, special requirements or concerns, please send us an inquiry and/or contact our Support team ahead of purchase. Recommended alternatives for this product can be found below, along with publications, customer reviews and Q&As</p>

Properties

Form	Liquid
Storage instructions	Shipped at 4°C. Upon delivery aliquot and store at -20°C. Avoid freeze / thaw cycles.
Storage buffer	pH: 7 Preservative: 0.09% Sodium azide Constituents: 0.021% PBS, 1.764% Sodium citrate, 1.815% Tris
Purity	Immunogen affinity purified
Purification notes	Antibody was affinity purified using an epitope specific to CDK11/CDC2L2/CDK11A immobilized on solid support. Antibody concentration was determined by extinction coefficient: absorbance at 280 nm of 1.4 equals 1.0 mg of IgG.
Clonality	Polyclonal
Isotype	IgG

Applications

The Abpromise guarantee

Our **Abpromise guarantee** covers the use of ab19393 in the following tested applications.

The application notes include recommended starting dilutions; optimal dilutions/concentrations should be determined by the end user.

Application	Abreviews	Notes
ICC/IF	★★★★★ (2)	Use at an assay dependent concentration.
WB	★★★★★ (3)	1/2000 - 1/10000. Detects a band of approximately 120 kDa (predicted molecular weight: 90 kDa).
IHC-P		1/250 - 1/1000. Perform heat mediated antigen retrieval with citrate buffer pH 6 before commencing with IHC staining protocol.
IP		Use at 2-5 µg/mg of lysate.

Target

Function

Appears to play multiple roles in cell cycle progression, cytokinesis and apoptosis. The p110 isoforms have been suggested to be involved in pre-mRNA splicing, potentially by phosphorylating the splicing protein SFRS7. The p58 isoform may act as a negative regulator of normal cell cycle progression.

Tissue specificity

Expressed ubiquitously. Some evidence of isoform-specific tissue distribution.

Sequence similarities

Belongs to the protein kinase superfamily. CMGC Ser/Thr protein kinase family. CDC2/CDKX subfamily.
Contains 1 protein kinase domain.

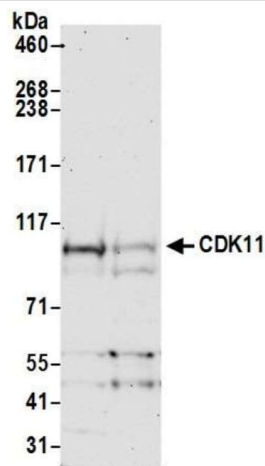
Post-translational modifications

During apoptosis, induced by Fas or tumor necrosis factor, specific CKD11 p110 isoforms are cleaved by caspases to produce a protein (p110C) that contains the C-terminal kinase domain of the CDK11 proteins.

Cellular localization

Cytoplasm. Nucleus.

Images



Western blot - Anti-CDK11/CDC2L2/CDK11A antibody (ab19393)

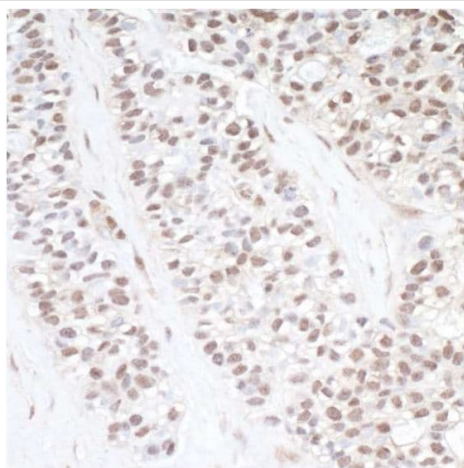
All lanes : Anti-CDK11/CDC2L2/CDK11A antibody (ab19393) at 1/10000 dilution

Lane 1 : HeLa Whole cell lysate

Lane 2 : HEK293T Whole cell lysate

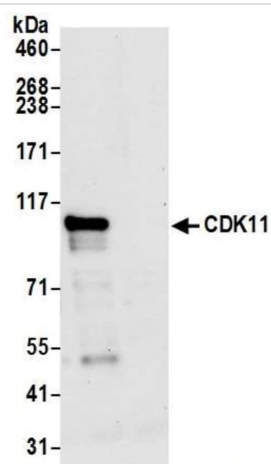
Lysates/proteins at 15 µg per lane.

Predicted band size: 90 kDa



Immunohistochemistry (Formalin/PFA-fixed paraffin-embedded sections) - Anti-CDK11/CDC2L2/CDK11A antibody (ab19393)

Immunohistochemical analysis of Formalin/PFA-fixed paraffin-embedded section of human lung carcinoma tissue labelling CDK11/CDC2L2/CDK11A with ab19393 at 1/1000 (1 µg/ml). Detection: DAB.



Immunoprecipitation - Anti-CDK11/CDC2L2/CDK11A antibody (ab19393)

CDK11/CDC2L2/CDK11A was immunoprecipitated from HeLa whole cell lysate with 3 µg/mg lysate. Western blot was performed from the immunoprecipitate using ab19393 at 1 µg/ml dilution.

Lane 1: ab19393 IP in HeLa whole cell lysate.

Lane 2: Control IgG IP in HeLa whole cell lysate.

Please note: All products are "FOR RESEARCH USE ONLY. NOT FOR USE IN DIAGNOSTIC PROCEDURES"

Our Abpromise to you: Quality guaranteed and expert technical support

- Replacement or refund for products not performing as stated on the datasheet
- Valid for 12 months from date of delivery
- Response to your inquiry within 24 hours
- We provide support in Chinese, English, French, German, Japanese and Spanish
- Extensive multi-media technical resources to help you
- We investigate all quality concerns to ensure our products perform to the highest standards

If the product does not perform as described on this datasheet, we will offer a refund or replacement. For full details of the Abpromise, please visit <https://www.abcam.com/abpromise> or contact our technical team.

Terms and conditions

- Guarantee only valid for products bought direct from Abcam or one of our authorized distributors