




## Product datasheet

### Anti-Cdk2 antibody ab235941

[8 References](#) [5 Images](#)

#### Overview

<b>Product name</b>	Anti-Cdk2 antibody
<b>Description</b>	Rabbit polyclonal to Cdk2
<b>Host species</b>	Rabbit
<b>Tested applications</b>	<b>Suitable for:</b> WB, IP, IHC-P, ICC/IF
<b>Species reactivity</b>	<b>Reacts with:</b> Human <b>Predicted to work with:</b> Mouse, Rat, Cow, Chinese hamster, Syrian hamster 
<b>Immunogen</b>	Recombinant full length protein corresponding to Human CDK2 aa 1 to the C-terminus. Database link: <a href="#">P24941</a> <div>  <a href="#">Run BLAST with</a>  <a href="#">Run BLAST with</a> </div>
<b>Positive control</b>	WB: K562, HEK-293, HeLa, Jurkat and HepG2 whole cell lysates. IHC-P: Human tonsil and colon cancer tissues. ICC/IF: HepG2 cells. IP: HeLa whole cell lysate.
<b>General notes</b>	<p>The Life Science industry has been in the grips of a reproducibility crisis for a number of years. Abcam is leading the way in addressing this with our range of recombinant monoclonal antibodies and knockout edited cell lines for gold-standard validation. Please check that this product meets your needs before purchasing.</p> <p>If you have any questions, special requirements or concerns, please send us an inquiry and/or contact our Support team ahead of purchase. Recommended alternatives for this product can be found below, along with publications, customer reviews and Q&amp;As</p>

#### Properties

<b>Form</b>	Liquid
<b>Storage instructions</b>	Shipped at 4°C. Store at +4°C short term (1-2 weeks). Upon delivery aliquot. Store at -20°C long term. Avoid freeze / thaw cycle.
<b>Storage buffer</b>	pH: 7.40 Preservative: 0.03% Proclin 300 Constituents: PBS, 50% Glycerol (glycerin, glycerine)
<b>Purity</b>	Protein G purified
<b>Purification notes</b>	Purity >95%.
<b>Clonality</b>	Polyclonal

Isotype

IgG

## Applications

### The Abpromise guarantee

Our **Abpromise guarantee** covers the use of ab235941 in the following tested applications.

The application notes include recommended starting dilutions; optimal dilutions/concentrations should be determined by the end user.

Application	Abreviews	Notes
WB		1/1000 - 1/5000. Predicted molecular weight: 34 kDa.
IP		1/200 - 1/2000.
IHC-P		1/500 - 1/1000.
ICC/IF		1/50 - 1/500.

## Target

### Function

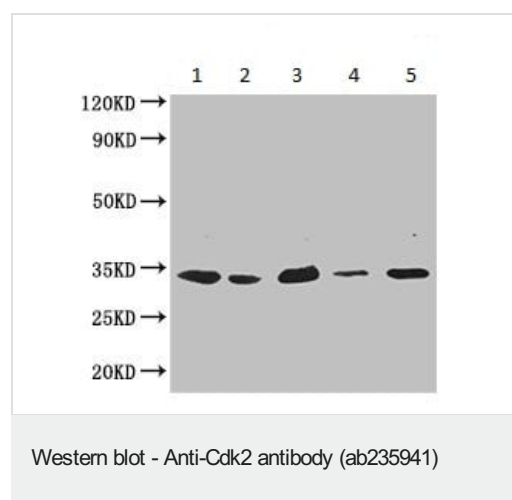
Involved in the control of the cell cycle. Interacts with cyclins A, B1, B3, D, or E. Activity of CDK2 is maximal during S phase and G2.

### Sequence similarities

Belongs to the protein kinase superfamily. CMGC Ser/Thr protein kinase family. CDC2/CDKX subfamily.

Contains 1 protein kinase domain.

## Images



**All lanes :** Anti-Cdk2 antibody (ab235941) at 1/1000 dilution

**Lane 1 :** K562 (human chronic myelogenous leukemia cell line from bone marrow) whole cell lysate

**Lane 2 :** HEK-293 (human epithelial cell line from embryonic kidney) whole cell lysate

**Lane 3 :** HeLa (human epithelial cell line from cervix adenocarcinoma) whole cell lysate

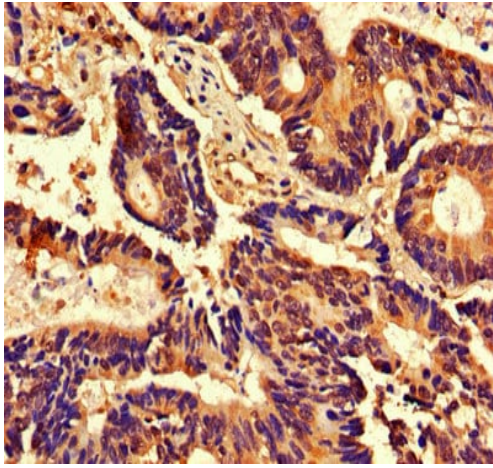
**Lane 4 :** Jurkat (human T cell leukemia cell line from peripheral blood) whole cell lysate

**Lane 5 :** HepG2 (human liver hepatocellular carcinoma cell line) whole cell lysate

### Secondary

**All lanes :** Goat polyclonal to rabbit IgG at 1/50000 dilution

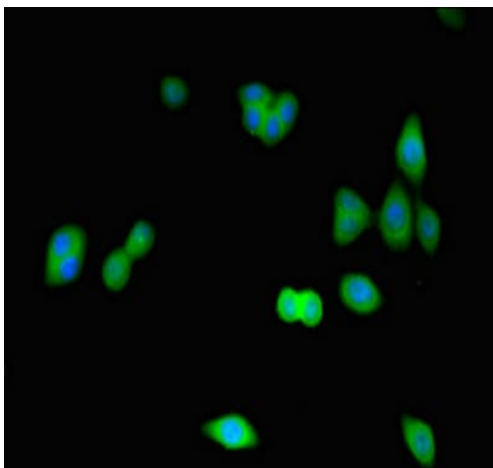
**Predicted band size:** 34 kDa



Immunohistochemistry (Formalin/PFA-fixed paraffin-embedded sections) - Anti-Cdk2 antibody (ab235941)

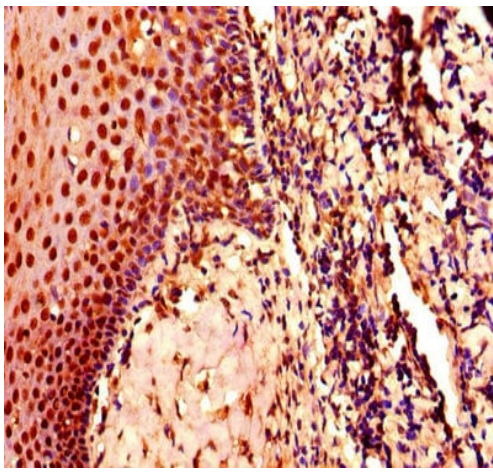
Paraffin-embedded human colon cancer tissue stained for Cdk2 using ab235941 at 1/800 dilution in immunohistochemical analysis.

After dewaxing and hydration, antigen retrieval was mediated by high pressure in a citrate buffer (pH 6.0). Section was blocked with 10% normal goat serum for 30 minutes at room temperature. Then primary antibody (1% BSA) was incubated at 4°C overnight. The primary is detected by a biotinylated secondary antibody and visualized using an HRP conjugated SP system.



Immunocytochemistry/ Immunofluorescence - Anti-Cdk2 antibody (ab235941)

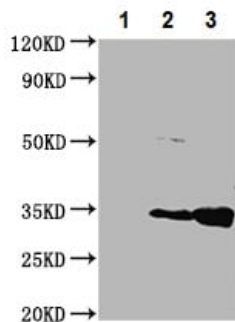
HepG2 (human liver hepatocellular carcinoma cell line) cells labeling Cdk2 using ab235941 at 1/100 dilution in ICC/IF, followed by Alexa Fluor 488<sup>®</sup> conjugated Goat Anti-Rabbit IgG (H+L).



Immunohistochemistry (Formalin/PFA-fixed paraffin-embedded sections) - Anti-Cdk2 antibody (ab235941)

Paraffin-embedded human tonsil tissue stained for Cdk2 using ab235941 at 1/800 dilution in immunohistochemical analysis.

After dewaxing and hydration, antigen retrieval was mediated by high pressure in a citrate buffer (pH 6.0). Section was blocked with 10% normal goat serum for 30 minutes at room temperature. Then primary antibody (1% BSA) was incubated at 4°C overnight. The primary is detected by a biotinylated secondary antibody and visualized using an HRP conjugated SP system.



Immunoprecipitation - Anti-Cdk2 antibody (ab235941)

Cdk2 was immunoprecipitated from 0.5 mg HeLa (human epithelial cell line from cervix adenocarcinoma) whole cell extract with ab235941 at 1/200 dilution.

Lane 1: Control rabbit IgG IP (1 µg) in HeLa whole cell lysate.

Lane 2: ab235941 IP in HeLa whole cell extract.

Lane 3: HeLa whole cell lysate 10 µg (Input).

For western blotting, an HRP-conjugated light chain specific antibody was used as the secondary antibody at 1/50000 dilution.

**Please note:** All products are "FOR RESEARCH USE ONLY. NOT FOR USE IN DIAGNOSTIC PROCEDURES"

## Our Abpromise to you: Quality guaranteed and expert technical support

- Replacement or refund for products not performing as stated on the datasheet
- Valid for 12 months from date of delivery
- Response to your inquiry within 24 hours
- We provide support in Chinese, English, French, German, Japanese and Spanish
- Extensive multi-media technical resources to help you
- We investigate all quality concerns to ensure our products perform to the highest standards

If the product does not perform as described on this datasheet, we will offer a refund or replacement. For full details of the Abpromise, please visit <https://www.abcam.com/abpromise> or contact our technical team.

## Terms and conditions

- Guarantee only valid for products bought direct from Abcam or one of our authorized distributors