

Product datasheet

Anti-Cdk9 antibody ab6544

★★★★★ [5 Abreviews](#) [8 References](#) [2 Images](#)

Overview

Product name	Anti-Cdk9 antibody
Description	Rabbit polyclonal to Cdk9
Host species	Rabbit
Specificity	No reaction is observed against other related cyclin dependent kinases.
Tested applications	Suitable for: IHC-P, ELISA, IP, WB
Species reactivity	Reacts with: Mouse, Human
Immunogen	Synthetic peptide corresponding to Human Cdk9. Multiple synthetic peptides corresponding to C-terminal and N-terminal domains.
Positive control	WB: human kidney lysate, PC3 lysate IHC: mouse tissue
General notes	<p>cdk9(PITALRE) interacts with a conserved domain in the TRAF-C region of the tumor necrosis factor signal transducer TRAF2. The positive transcription elongation factor b (P-TEFb) is identified as cdk9 paired with cyclin T1.</p> <p>The Life Science industry has been in the grips of a reproducibility crisis for a number of years. Abcam is leading the way in addressing this with our range of recombinant monoclonal antibodies and knockout edited cell lines for gold-standard validation. Please check that this product meets your needs before purchasing.</p> <p>If you have any questions, special requirements or concerns, please send us an inquiry and/or contact our Support team ahead of purchase. Recommended alternatives for this product can be found below, along with publications, customer reviews and Q&As</p>

Properties

Form	Liquid
Storage instructions	Shipped at 4°C. Store at +4°C short term (1-2 weeks). Upon delivery aliquot. Store at -20°C or -80°C. Avoid freeze / thaw cycle.
Storage buffer	Preservative: 0.01% Sodium azide Constituents: 0.88% Sodium chloride, 0.42% Potassium phosphate
Purity	Whole antiserum
Purification notes	Sterile filtered.
Clonality	Polyclonal

Isotype

IgG

Applications

The Abpromise guarantee

Our **Abpromise guarantee** covers the use of ab6544 in the following tested applications.

The application notes include recommended starting dilutions; optimal dilutions/concentrations should be determined by the end user.

Application	Abreviews	Notes
IHC-P		1/200 - 1/1000.
ELISA		Use at an assay dependent concentration.
IP		Use at an assay dependent concentration.
WB	★ ★ ★ ★ ★ (2)	Use at an assay dependent concentration. Predicted molecular weight: 43 kDa.

Target

Function

Member of the cyclin-dependent kinase pair (CDK9/cyclin-T) complex, also called positive transcription elongation factor b (P-TEFb), which facilitates the transition from abortive to production elongation by phosphorylating the CTD (C-terminal domain) of the large subunit of RNA polymerase II (RNAP II), SUPT5H and RDBP. The CDK9/cyclin-K complex has also a kinase activity toward CTD of RNAP II and can substitute for P-TEFb in vitro.

Tissue specificity

Ubiquitous.

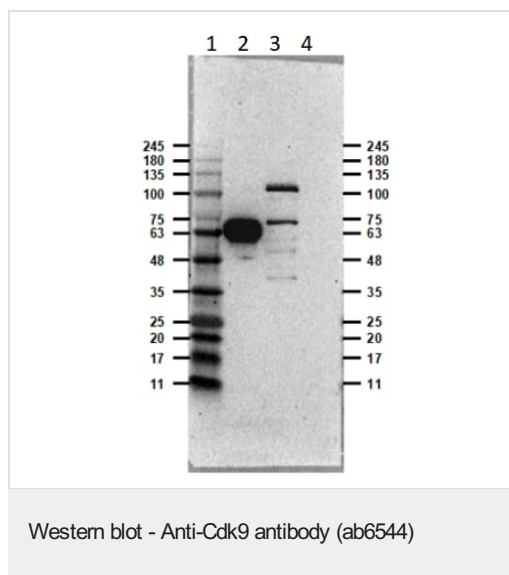
Sequence similarities

Belongs to the protein kinase superfamily. CMGC Ser/Thr protein kinase family. CDC2/CDKX subfamily.
Contains 1 protein kinase domain.

Cellular localization

Nucleus.

Images



All lanes : Anti-Cdk9 antibody (ab6544) at 1/1000 dilution

Lane 1 : Opal PreStain 11-245 kDa (MB-210-0500) at 10 μ l

Lane 2 : Human kidney lysate at 5 μ g

Lane 3 : PC3 lysate at 20 μ g

Lane 4 : Blank well

Predicted band size: 43 kDa

Exposure time: 46 seconds



Immunohistochemical staining of mouse tissue using anti-cdk9 (PITALRE) antiserum. The staining shows the location of cdk9 / PITARE protein in developing mouse tissue. Arrow indicates area of high expression.

Please note: All products are "FOR RESEARCH USE ONLY. NOT FOR USE IN DIAGNOSTIC PROCEDURES"

Our Abpromise to you: Quality guaranteed and expert technical support

- Replacement or refund for products not performing as stated on the datasheet
- Valid for 12 months from date of delivery
- Response to your inquiry within 24 hours
- We provide support in Chinese, English, French, German, Japanese and Spanish
- Extensive multi-media technical resources to help you
- We investigate all quality concerns to ensure our products perform to the highest standards

If the product does not perform as described on this datasheet, we will offer a refund or replacement. For full details of the Abpromise, please visit <https://www.abcam.com/abpromise> or contact our technical team.

Terms and conditions

- Guarantee only valid for products bought direct from Abcam or one of our authorized distributors