




## Product datasheet

### Anti-CDKN2A/p16INK4a antibody [1D7D2A1] ab201980

★★★★★ 1 Abreviews 16 References 6 Images

#### Overview

<b>Product name</b>	Anti-CDKN2A/p16INK4a antibody [1D7D2A1]
<b>Description</b>	Mouse monoclonal [1D7D2A1] to CDKN2A/p16INK4a
<b>Host species</b>	Mouse
<b>Specificity</b>	Expression levels of the CDKN2A/p16INK4a protein may vary with sample type. It's barely expressed in normal tissue, and mostly expressed in some tumour tissues, such as cervical cancer, breast cancer and so on. Moreover, only expressed in some cell lines. Please see images for recommended positive controls.
<b>Tested applications</b>	<b>Suitable for:</b> IHC-P, WB, Flow Cyt
<b>Species reactivity</b>	<b>Reacts with:</b> Human <b>Predicted to work with:</b> Mouse, Rat 
<b>Immunogen</b>	Recombinant full length protein corresponding to Human CDKN2A/p16INK4a aa 1 to the C-terminus. Database link: <a href="#">P42771</a>  <a href="#">Run BLAST with</a>  <a href="#">Run BLAST with</a>
<b>Positive control</b>	WB: Recombinant human CDKN2A protein; CDKN2A transfected HEK293 cells; HeLa, HepG2, HEK293 cell lysate. Flow Cytometry: HeLa cells. IHC-P: Human endometrial cancer and esophageal cancer tissue.
<b>General notes</b>	<p>This product was changed from ascites to supernatant. Lot no's high than GR286368-6 are from Tissue Culture Supernatant</p> <p>The Life Science industry has been in the grips of a reproducibility crisis for a number of years. Abcam is leading the way in addressing this with our range of recombinant monoclonal antibodies and knockout edited cell lines for gold-standard validation. Please check that this product meets your needs before purchasing.</p> <p>If you have any questions, special requirements or concerns, please send us an inquiry and/or contact our Support team ahead of purchase. Recommended alternatives for this product can be found below, along with publications, customer reviews and Q&amp;As</p>

#### Properties

<b>Form</b>	Liquid
<b>Storage instructions</b>	Shipped at 4°C. Store at +4°C short term (1-2 weeks). Upon delivery aliquot. Store at -20°C long

term. Avoid freeze / thaw cycle.

#### Storage buffer

Preservative: 0.05% Sodium azide

Constituent: PBS

#### Purity

Protein G purified

#### Purification notes

Purified from tissue culture supernatant.

#### Clonality

Monoclonal

#### Clone number

1D7D2A1

#### Isotype

IgG1

### Applications

#### The Abpromise guarantee

Our **Abpromise guarantee** covers the use of ab201980 in the following tested applications.

The application notes include recommended starting dilutions; optimal dilutions/concentrations should be determined by the end user.

Application	Abreviews	Notes
IHC-P		1/200 - 1/1000.
WB		1/500 - 1/2000. Predicted molecular weight: 17 kDa.
Flow Cyt		1/200 - 1/400. <b>ab170190</b> - Mouse monoclonal IgG1, is suitable for use as an isotype control with this antibody.

### Target

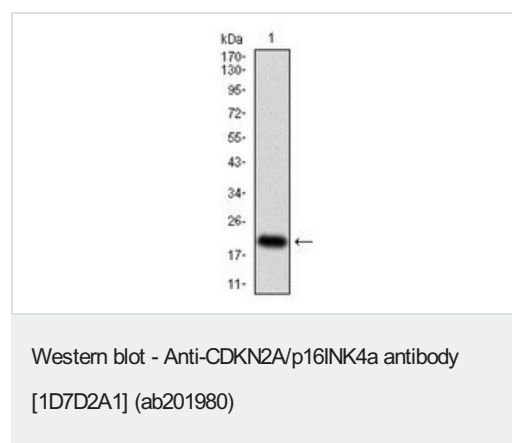
#### Cellular localization

Cytoplasmic and Nuclear

#### Form

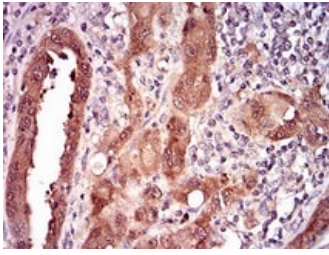
There are 4 isoforms produced by alternative splicing. Isoform 1 also known as: p16INK4a; Isoform 3 also known as: p12; Isoform 4 also known as: p14ARF; p19ARF; ARF.

### Images



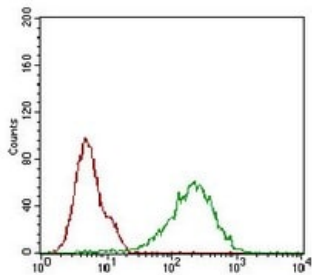
Anti-CDKN2A/p16INK4a antibody [1D7D2A1] (ab201980) at 1/500 dilution + recombinant human CDKN2A protein

**Predicted band size:** 17 kDa



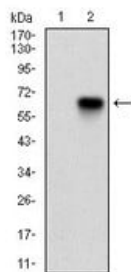
Immunohistochemical analysis of paraffin-embedded human endometrial cancer tissues labeling CDKN2A using ab201980 at 1/200 dilution followed by DAB staining.

Immunohistochemistry (Formalin/PFA-fixed paraffin-embedded sections) - Anti-CDKN2A/p16INK4a antibody [1D7D2A1] (ab201980)



Flow cytometric analysis of HeLa (Human epithelial cell line from cervix adenocarcinoma) cells labeling CDKN2A using ab201980 at 1/200 dilution (green) compared with a negative control (red).

Flow Cytometry - Anti-CDKN2A/p16INK4a antibody [1D7D2A1] (ab201980)



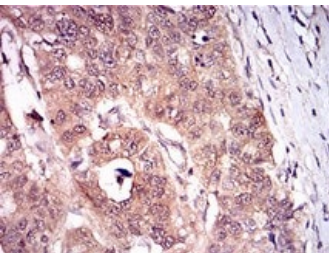
**All lanes :** Anti-CDKN2A/p16INK4a antibody [1D7D2A1] (ab201980) at 1/500 dilution

**Lane 1 :** Non-transfected HEK-293 (Human epithelial cell line from embryonic kidney) cell lysate

**Lane 2 :** CDKN2A (AA: 1-156)-hlgGfC transfected HEK-293 (Human epithelial cell line from embryonic kidney) cell lysate

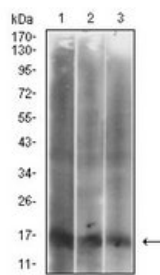
Western blot - Anti-CDKN2A/p16INK4a antibody [1D7D2A1] (ab201980)

**Predicted band size:** 17 kDa



Immunohistochemical analysis of paraffin-embedded human esophageal cancer tissues labeling CDKN2A using ab201980 at 1/200 dilution followed by DAB staining.

Immunohistochemistry (Formalin/PFA-fixed paraffin-embedded sections) - Anti-CDKN2A/p16INK4a antibody [1D7D2A1] (ab201980)



Western blot - Anti-CDKN2A/p16INK4a antibody  
[1D7D2A1] (ab201980)

**All lanes :** Anti-CDKN2A/p16INK4a antibody [1D7D2A1]  
(ab201980) at 1/500 dilution

**Lane 1 :** HeLa (Human epithelial cell line from cervix  
adenocarcinoma) cell lysate

**Lane 2 :** HepG2 (Human liver hepatocellular carcinoma cell line)  
cell lysate

**Lane 3 :** HEK-293 (Human epithelial cell line from embryonic  
kidney) cell lysate

**Predicted band size:** 17 kDa

**Please note:** All products are "FOR RESEARCH USE ONLY. NOT FOR USE IN DIAGNOSTIC PROCEDURES"

### Our Abpromise to you: Quality guaranteed and expert technical support

- Replacement or refund for products not performing as stated on the datasheet
- Valid for 12 months from date of delivery
- Response to your inquiry within 24 hours
- We provide support in Chinese, English, French, German, Japanese and Spanish
- Extensive multi-media technical resources to help you
- We investigate all quality concerns to ensure our products perform to the highest standards

If the product does not perform as described on this datasheet, we will offer a refund or replacement. For full details of the Abpromise, please visit <https://www.abcam.com/abpromise> or contact our technical team.

### Terms and conditions

- Guarantee only valid for products bought direct from Abcam or one of our authorized distributors