

Product datasheet

Anti-CEACAM6 antibody [EPR4404(2)] ab134058

Recombinant RabMAb

3 Images

Overview

Product name	Anti-CEACAM6 antibody [EPR4404(2)]
Description	Rabbit monoclonal [EPR4404(2)] to CEACAM6
Host species	Rabbit
Tested applications	Suitable for: WB Unsuitable for: IHC-P
Species reactivity	Reacts with: Human
Immunogen	Synthetic peptide. This information is proprietary to Abcam and/or its suppliers.
Positive control	WB: MCF-7, SW480, HT-29, A549 and BxPC-3 cell lysates, His-tagged human CEACAM6 recombinant protein (aa 35-320).
General notes	<p>This product is a recombinant monoclonal antibody, which offers several advantages including:</p> <ul style="list-style-type: none">- High batch-to-batch consistency and reproducibility- Improved sensitivity and specificity- Long-term security of supply- Animal-free production <p>For more information see here.</p> <p>Our RabMAb[®] technology is a patented hybridoma-based technology for making rabbit monoclonal antibodies. For details on our patents, please refer to RabMAb[®] patents.</p> <p>Mouse, Rat: We have preliminary internal testing data to indicate this antibody may not react with these species. Please contact us for more information.</p>

Properties

Form	Liquid
Storage instructions	Shipped at 4°C. Store at -20°C. Stable for 12 months at -20°C.
Storage buffer	pH: 7.2 Preservative: 0.05% Sodium azide Constituents: 0.1% BSA, 40% Glycerol (glycerin, glycerine), 9.85% Tris glycine, 50% Tissue culture supernatant
Purity	Tissue culture supernatant

Clonality	Monoclonal
Clone number	EPR4404(2)
Isotype	IgG

Applications

The Abpromise guarantee Our **Abpromise guarantee** covers the use of ab134058 in the following tested applications. The application notes include recommended starting dilutions; optimal dilutions/concentrations should be determined by the end user.

Application	Abreviews	Notes
WB		1/1000 - 1/50000. Predicted molecular weight: 37 kDa.

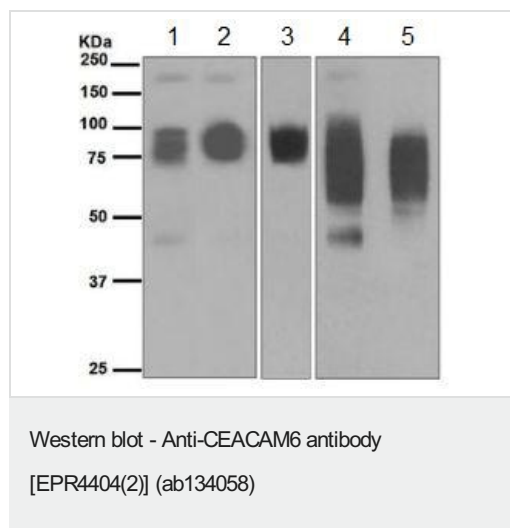
Application notes Is unsuitable for IHC-P.

Target

Sequence similarities Belongs to the immunoglobulin superfamily. CEA family. Contains 2 Ig-like C2-type (immunoglobulin-like) domains. Contains 1 Ig-like V-type (immunoglobulin-like) domain.

Cellular localization Cell membrane.

Images



All lanes : Anti-CEACAM6 antibody [EPR4404(2)] (ab134058) at 1/10000 dilution

- Lane 1** : MCF-7 cell lysate
- Lane 2** : SW480 cell lysate
- Lane 3** : HT-29 cell lysate
- Lane 4** : A549 cell lysate
- Lane 5** : BxPC-3 cell lysate

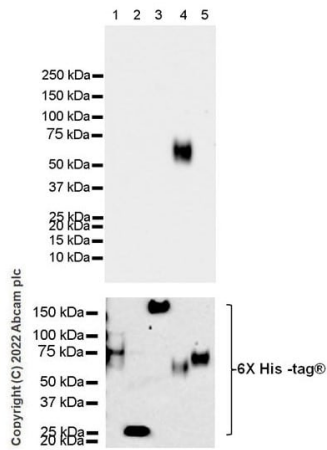
Lysates/proteins at 10 µg per lane.

Secondary

All lanes : HRP labelled goat anti-rabbit at 1/2000 dilution

Predicted band size: 37 kDa

Exposure time: 1 second



Western blot - Anti-CEACAM6 antibody
[EPR4404(2)] (ab134058)

All lanes : Anti-CEACAM6 antibody [EPR4404(2)] (ab134058) at 1/1000 dilution

Lane 1 : His-tagged human CEACAM1 recombinant protein (aa 35-428)

Lane 2 : His-tagged human CEACAM3 recombinant protein (aa 35-252)

Lane 3 : His-tagged human CEACAM5 recombinant protein (aa 35-586)

Lane 4 : His-tagged human CEACAM6 recombinant protein (aa 35-320)

Lane 5 : His-tagged human CEACAM8 recombinant protein (aa 35-320)

Lysates/proteins at 20 ng per lane.

Secondary

All lanes : Goat Anti-Rabbit IgG H&L (HRP) ([ab97051](#)) at 1/100000 dilution

Observed band size : 60 kDa

Exposure time : 3 minute

Blocking buffer and concentration: 5% NFDm/TBST

Diluting buffer and concentration: 5% NFDm/TBST

This antibody does not cross-react with human CEACAM1, CEACAM3, CEACAM5, or CEACAM8.

Why choose a recombinant antibody?

 Research with confidence Consistent and reproducible results	 Long-term and scalable supply Recombinant technology
 Success from the first experiment Confirmed specificity	 Ethical standards compliant Animal-free production

Anti-CEACAM6 antibody [EPR4404(2)] (ab134058)

Please note: All products are "FOR RESEARCH USE ONLY. NOT FOR USE IN DIAGNOSTIC PROCEDURES"

Our Abpromise to you: Quality guaranteed and expert technical support

- Replacement or refund for products not performing as stated on the datasheet
- Valid for 12 months from date of delivery
- Response to your inquiry within 24 hours

- We provide support in Chinese, English, French, German, Japanese and Spanish
- Extensive multi-media technical resources to help you
- We investigate all quality concerns to ensure our products perform to the highest standards

If the product does not perform as described on this datasheet, we will offer a refund or replacement. For full details of the Abpromise, please visit <https://www.abcam.com/abpromise> or contact our technical team.

Terms and conditions

- Guarantee only valid for products bought direct from Abcam or one of our authorized distributors