




## Product datasheet

### Anti-CEBP Alpha/CEBPA antibody [15C8] ab15047

[4 References](#) [1 Image](#)

#### Overview

<b>Product name</b>	Anti-CEBP Alpha/CEBPA antibody [15C8]
<b>Description</b>	Mouse monoclonal [15C8] to CEBP Alpha/CEBPA
<b>Host species</b>	Mouse
<b>Specificity</b>	This antibody may cross react with glutamate--ammonia ligase domain containing 1 protein ((Lengsin) Lens glutamine synthase-like) as it has 8/10 aa identical to the immunogen used to generate ab15047 (this protein is part of the Glutamate synthetase family so its compartmentalization to the cytoplasm) unlike CEDPA which is found in the nucleus.
<b>Tested applications</b>	<b>Suitable for:</b> WB
<b>Species reactivity</b>	<b>Reacts with:</b> Human <b>Predicted to work with:</b> Hamster, Cow, Xenopus laevis, Schizosaccharomyces pombe, Zebrafish, Goldfish, Aspergillus nidulans, Neurospora crassa 
<b>Immunogen</b>	Synthetic peptide corresponding to Mouse CEBP Alpha/CEBPA aa 1-14. Sequence: MESADFYEEVPRPP  (Peptide available as <a href="#">ab39791</a> ) <div>  <a href="#">Run BLAST with</a>  <a href="#">Run BLAST with</a> </div>
<b>Epitope</b>	Amino terminal region.
<b>Positive control</b>	Transfected hu293T cells.
<b>General notes</b>	<p>The Life Science industry has been in the grips of a reproducibility crisis for a number of years. Abcam is leading the way in addressing this with our range of recombinant monoclonal antibodies and knockout edited cell lines for gold-standard validation. Please check that this product meets your needs before purchasing.</p> <p>If you have any questions, special requirements or concerns, please send us an inquiry and/or contact our Support team ahead of purchase. Recommended alternatives for this product can be found below, along with publications, customer reviews and Q&amp;As</p>

#### Properties

<b>Form</b>	Liquid
<b>Storage instructions</b>	Shipped at 4°C. Store at +4°C short term (1-2 weeks). Upon delivery aliquot. Store at -20°C or -

	80°C. Avoid freeze / thaw cycle.
<b>Storage buffer</b>	Preservative: 0.05% Sodium azide Constituents: 99% PBS, 0.1% BSA
<b>Purity</b>	Protein G purified
<b>Clonality</b>	Monoclonal
<b>Clone number</b>	15C8
<b>Isotype</b>	IgG

## Applications

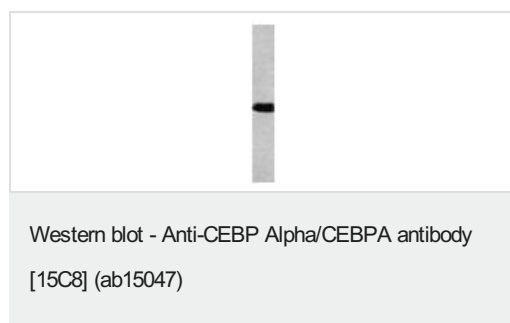
**The Abpromise guarantee** Our **Abpromise guarantee** covers the use of ab15047 in the following tested applications. The application notes include recommended starting dilutions; optimal dilutions/concentrations should be determined by the end user.

Application	Abreviews	Notes
<b>WB</b>		Use a concentration of 2 µg/ml. Detects a band of approximately 45 kDa (predicted molecular weight: 45 kDa).

## Target

<b>Function</b>	C/EBP is a DNA-binding protein that recognizes two different motifs: the CCAAT homology common to many promoters and the enhanced core homology common to many enhancers.
<b>Sequence similarities</b>	Belongs to the bZIP family. C/EBP subfamily. Contains 1 bZIP domain.
<b>Cellular localization</b>	Nucleus.

## Images



Anti-CEBP Alpha/CEBPA antibody [15C8] (ab15047) at 2 µg/ml + 293 cell lysates transfected with CEBP alpha.

**Predicted band size:** 45 kDa

**Please note:** All products are "FOR RESEARCH USE ONLY. NOT FOR USE IN DIAGNOSTIC PROCEDURES"

## Our Abpromise to you: Quality guaranteed and expert technical support

- Replacement or refund for products not performing as stated on the datasheet
- Valid for 12 months from date of delivery

- Response to your inquiry within 24 hours
- We provide support in Chinese, English, French, German, Japanese and Spanish
- Extensive multi-media technical resources to help you
- We investigate all quality concerns to ensure our products perform to the highest standards

If the product does not perform as described on this datasheet, we will offer a refund or replacement. For full details of the Abpromise, please visit <https://www.abcam.com/abpromise> or contact our technical team.

#### **Terms and conditions**

---

- Guarantee only valid for products bought direct from Abcam or one of our authorized distributors