

## Product datasheet

### Anti-CEBP Alpha/CEBPA antibody ab15048

★★★★★ [2 Abreviews](#) [8 References](#) [1 Image](#)

#### Overview

<b>Product name</b>	Anti-CEBP Alpha/CEBPA antibody
<b>Description</b>	Rabbit polyclonal to CEBP Alpha/CEBPA
<b>Host species</b>	Rabbit
<b>Tested applications</b>	<b>Suitable for:</b> WB
<b>Species reactivity</b>	<b>Reacts with:</b> Mouse
<b>Immunogen</b>	Recombinant fragment corresponding to Rat CEBP Alpha/CEBPA. Database link: <a href="#">NM_012524</a>
<b>General notes</b>	<p>The Life Science industry has been in the grips of a reproducibility crisis for a number of years. Abcam is leading the way in addressing this with our range of recombinant monoclonal antibodies and knockout edited cell lines for gold-standard validation. Please check that this product meets your needs before purchasing.</p> <p>If you have any questions, special requirements or concerns, please send us an inquiry and/or contact our Support team ahead of purchase. Recommended alternatives for this product can be found below, along with publications, customer reviews and Q&amp;As</p>

#### Properties

<b>Form</b>	Liquid
<b>Storage instructions</b>	Shipped at 4°C. Store at +4°C short term (1-2 weeks). Upon delivery aliquot. Store at -20°C or -80°C. Avoid freeze / thaw cycle.
<b>Storage buffer</b>	Preservative: 0.01% Sodium azide Constituents: 99% PBS, 0.1% BSA
<b>Purity</b>	Protein A purified
<b>Clonality</b>	Polyclonal
<b>Isotype</b>	IgG

#### Applications

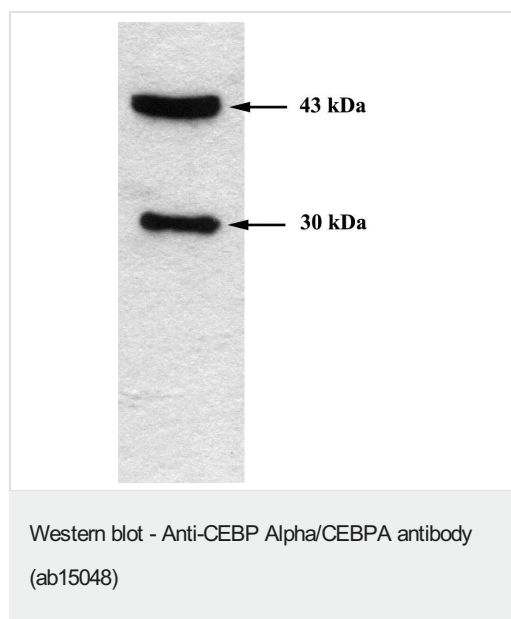
**The Abpromise guarantee** Our [Abpromise guarantee](#) covers the use of ab15048 in the following tested applications. The application notes include recommended starting dilutions; optimal dilutions/concentrations should be determined by the end user.

Application	Abreviews	Notes
WB	★★★★★ (2)	Use a concentration of 2 µg/ml. Detects a band of approximately 30 kDa (predicted molecular weight: 30,43 kDa). Detects bands of approximately 30 kDa and 43 kDa representing CEBP alpha in mouse 3T3-L1 cells.

## Target

Function	C/EBP is a DNA-binding protein that recognizes two different motifs: the CCAAT homology common to many promoters and the enhanced core homology common to many enhancers.
Sequence similarities	Belongs to the bZIP family. C/EBP subfamily. Contains 1 bZIP domain.
Cellular localization	Nucleus.

## Images



Anti-CEBP Alpha/CEBPA antibody (ab15048) + 3T3-L1 cell lysate.

**Predicted band size:** 30,43 kDa

Western blot of CEBP alpha using ab15048 on 3T3-L1 cells.

**Please note:** All products are "FOR RESEARCH USE ONLY. NOT FOR USE IN DIAGNOSTIC PROCEDURES"

## Our Promise to you: Quality guaranteed and expert technical support

- Replacement or refund for products not performing as stated on the datasheet
- Valid for 12 months from date of delivery
- Response to your inquiry within 24 hours
- We provide support in Chinese, English, French, German, Japanese and Spanish
- Extensive multi-media technical resources to help you
- We investigate all quality concerns to ensure our products perform to the highest standards

If the product does not perform as described on this datasheet, we will offer a refund or replacement. For full details of the Abpromise, please visit <https://www.abcam.com/abpromise> or contact our technical team.

#### **Terms and conditions**

---

- Guarantee only valid for products bought direct from Abcam or one of our authorized distributors