

Product datasheet

Anti-CEBP Alpha/CEBPA antibody [EP708Y] α b40761

Recombinant RabMAb

★★★★★ **2 Abreviews** **18 References** [5 Images](#)

Overview

Product name	Anti-CEBP Alpha/CEBPA antibody [EP708Y]
Description	Rabbit monoclonal [EP708Y] to CEBP Alpha/CEBPA
Host species	Rabbit
Specificity	This antibody recognizes isoform1 and isoform 4.
Tested applications	Suitable for: Flow Cyt (Intra), WB, ICC/IF Unsuitable for: IHC or IP
Species reactivity	Reacts with: Human
Immunogen	Synthetic peptide within Human CEBP Alpha/CEBPA aa 1-100 (N terminal). The exact sequence is proprietary.
Positive control	U937+LPS cell lysate, HeLa cells.
General notes	<p>This product is a recombinant monoclonal antibody, which offers several advantages including:</p> <ul style="list-style-type: none"> - High batch-to-batch consistency and reproducibility - Improved sensitivity and specificity - Long-term security of supply - Animal-free production <p>For more information see here.</p> <p>Our RabMAb[®] technology is a patented hybridoma-based technology for making rabbit monoclonal antibodies. For details on our patents, please refer to RabMAb[®] patents.</p> <p>Mouse, Rat: We have preliminary internal testing data to indicate this antibody may not react with these species. Please contact us for more information.</p>

Properties

Form	Liquid
Storage instructions	Shipped at 4°C. Upon delivery aliquot and store at -20°C. Avoid freeze / thaw cycles.
Storage buffer	<p>pH: 7.20</p> <p>Preservative: 0.05% Sodium azide</p> <p>Constituents: 0.1% BSA, 40% Glycerol (glycerin, glycerine), 9.85% Tris glycine, 50% Tissue culture supernatant</p>

Purity	Protein A purified
Clonality	Monoclonal
Clone number	EP708Y
Isotype	IgG

Applications

The Abpromise guarantee Our **Abpromise guarantee** covers the use of ab40761 in the following tested applications.

The application notes include recommended starting dilutions; optimal dilutions/concentrations should be determined by the end user.

Application	Abreviews	Notes
Flow Cyt (Intra)		1/100. ab172730 - Rabbit monoclonal IgG, is suitable for use as an isotype control with this antibody.
WB	★★★★★ (2)	1/1000 - 1/10000. Detects a band of approximately 30,43 kDa (predicted molecular weight: 43 kDa).
ICC/IF		1/250 - 1/500.

Application notes Is unsuitable for IHC or IP.

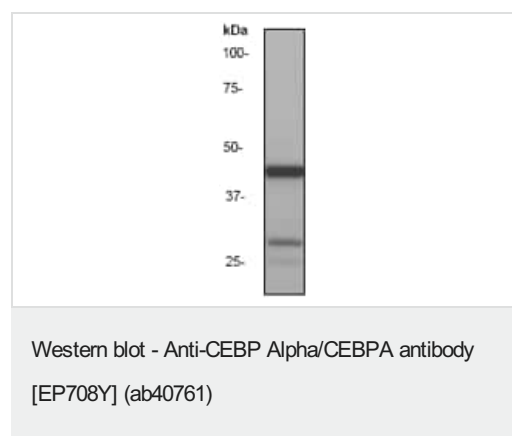
Target

Function C/EBP is a DNA-binding protein that recognizes two different motifs: the CCAAT homology common to many promoters and the enhanced core homology common to many enhancers.

Sequence similarities Belongs to the bZIP family. C/EBP subfamily.
Contains 1 bZIP domain.

Cellular localization Nucleus.

Images

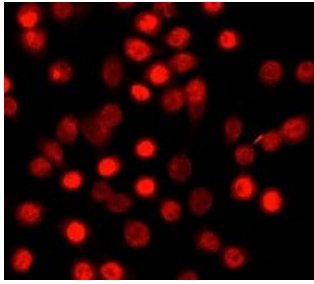


Anti-CEBP Alpha/CEBPA antibody [EP708Y] (ab40761) at 1/1000 dilution + U937 + LPS cell lysate at 10 µg

Predicted band size: 43 kDa

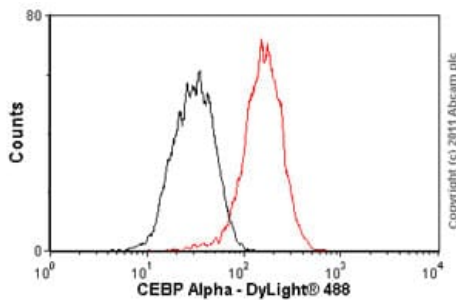
Observed band size: 30,43 kDa

We are unsure as to the identity of the 30kda band.



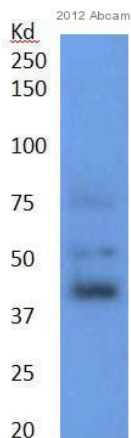
Immunocytochemistry/ Immunofluorescence - Anti-CEBP Alpha/CEBPA antibody [EP708Y] (ab40761)

ab40761 (1/250) staining HeLa cells using immunofluorescence.



Flow Cytometry (Intracellular) - Anti-CEBP Alpha/CEBPA antibody [EP708Y] (ab40761)

Overlay histogram showing HeLa cells stained with ab40761 (red line). The cells were fixed with 80% methanol (5 min) and then permeabilized with 0.1% PBS-Tween for 20 min. The cells were then incubated in 1x PBS / 10% normal goat serum / 0.3M glycine to block non-specific protein-protein interactions followed by the antibody (ab40761, 1/100 dilution) for 30 min at 22°C. The secondary antibody used was DyLight® 488 goat anti-rabbit IgG (H+L) ([ab96899](#)) at 1/500 dilution for 30 min at 22°C. Isotype control antibody (black line) was rabbit IgG (monoclonal) (1µg/1x10⁶ cells) used under the same conditions. Acquisition of >5,000 events was performed.



Western blot - Anti-CEBP Alpha/CEBPA antibody [EP708Y] (ab40761)

This image is courtesy of an anonymous Abreview

Anti-CEBP Alpha/CEBPA antibody [EP708Y] (ab40761) at 1/5000 dilution + Human MCF-7 whole cell lysate at 100000 cells

Secondary

HRP-conjugated Donkey anti-rabbit IgG polyclonal at 1/2000 dilution

Developed using the ECL technique.

Performed under reducing conditions.

Predicted band size: 43 kDa

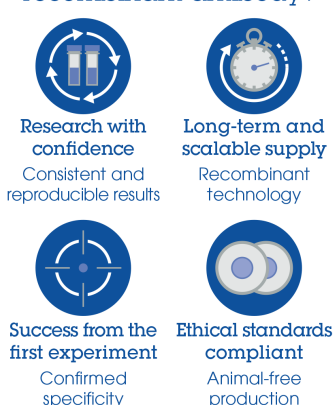
Observed band size: 40 kDa

Exposure time: 1 minute

Blocked with 5% Milk for 1 hour at 24°C.

We are unsure as to the identity of the 30kda band.

Why choose a recombinant antibody?



- Research with confidence**
Consistent and reproducible results
- Long-term and scalable supply**
Recombinant technology
- Success from the first experiment**
Confirmed specificity
- Ethical standards compliant**
Animal-free production

Anti-CEBP Alpha/CEBPA antibody [EP708Y]
(ab40761)

Please note: All products are "FOR RESEARCH USE ONLY. NOT FOR USE IN DIAGNOSTIC PROCEDURES"

Our Abpromise to you: Quality guaranteed and expert technical support

- Replacement or refund for products not performing as stated on the datasheet
- Valid for 12 months from date of delivery
- Response to your inquiry within 24 hours
- We provide support in Chinese, English, French, German, Japanese and Spanish
- Extensive multi-media technical resources to help you
- We investigate all quality concerns to ensure our products perform to the highest standards

If the product does not perform as described on this datasheet, we will offer a refund or replacement. For full details of the Abpromise, please visit <https://www.abcam.com/abpromise> or contact our technical team.

Terms and conditions

- Guarantee only valid for products bought direct from Abcam or one of our authorized distributors