

## Product datasheet

# Anti-CEBP Beta antibody [1H7] ab15050

[14 References](#) [2 Images](#)

### Overview

<b>Product name</b>	Anti-CEBP Beta antibody [1H7]
<b>Description</b>	Mouse monoclonal [1H7] to CEBP Beta
<b>Host species</b>	Mouse
<b>Tested applications</b>	<b>Suitable for:</b> ICC/IF, WB
<b>Species reactivity</b>	<b>Reacts with:</b> Mouse
<b>Immunogen</b>	Recombinant full length LIP protein (Mouse)
<b>Positive control</b>	ICC/IF: P388D1 cells WB: 3T3-L1 cell lysate
<b>General notes</b>	<p>The Life Science industry has been in the grips of a reproducibility crisis for a number of years. Abcam is leading the way in addressing this with our range of recombinant monoclonal antibodies and knockout edited cell lines for gold-standard validation. Please check that this product meets your needs before purchasing.</p> <p>If you have any questions, special requirements or concerns, please send us an inquiry and/or contact our Support team ahead of purchase. Recommended alternatives for this product can be found below, along with publications, customer reviews and Q&amp;As</p>

### Properties

<b>Form</b>	Liquid
<b>Storage instructions</b>	Shipped at 4°C. Store at +4°C short term (1-2 weeks). Upon delivery aliquot. Store at -20°C or -80°C. Avoid freeze / thaw cycle.
<b>Storage buffer</b>	Preservative: 0.05% Sodium azide Constituents: 99% PBS, 0.1% BSA
<b>Purity</b>	Protein G purified
<b>Clonality</b>	Monoclonal
<b>Clone number</b>	1H7
<b>Isotype</b>	IgG

### Applications

The **Abpromise guarantee** Our **Abpromise guarantee** covers the use of ab15050 in the following tested applications.

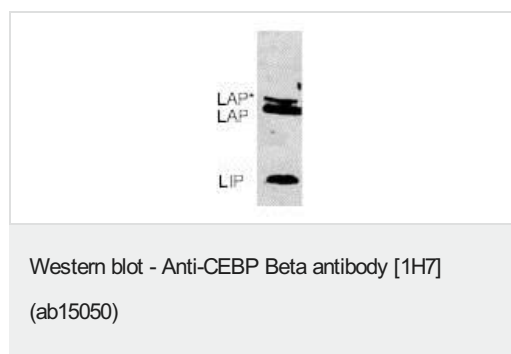
The application notes include recommended starting dilutions; optimal dilutions/concentrations should be determined by the end user.

Application	Abreviews	Notes
ICC/IF		Use a concentration of 4 µg/ml. Fix with 4% paraformaldehyde.
WB		Use a concentration of 1 µg/ml. Detects a band of approximately 38 kDa (predicted molecular weight: 35,38,20 kDa).

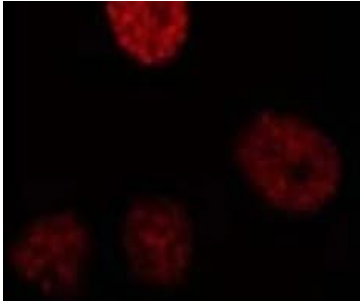
## Target

<b>Function</b>	Important transcriptional activator in the regulation of genes involved in immune and inflammatory responses. Specifically binds to an IL-1 response element in the IL-6 gene. NF-IL6 also binds to regulatory regions of several acute-phase and cytokines genes. It probably plays a role in the regulation of acute-phase reaction, inflammation and hemopoiesis. The consensus recognition site is 5'-T[TG]NNGNAA[TG]-3'. Functions in brown adipose tissue (BAT) differentiation.
<b>Tissue specificity</b>	Expressed at low levels in the lung, kidney and spleen.
<b>Sequence similarities</b>	Belongs to the bZIP family. C/EBP subfamily. Contains 1 bZIP domain.
<b>Domain</b>	the 9aaTAD motif is a transactivation domain present in a large number of yeast and animal transcription factors.
<b>Post-translational modifications</b>	Sumoylated by polymeric chains of SUMO2 or SUMO3.
<b>Cellular localization</b>	Nucleus.

## Images



Western blot of the 3T3-L1 cell lysate using ab15050.



Immunofluorescence staining of CEBP beta in P388D1 cells using ab15050.

Immunocytochemistry/ Immunofluorescence - Anti-CEBP Beta antibody [1H7] (ab15050)

**Please note:** All products are "FOR RESEARCH USE ONLY. NOT FOR USE IN DIAGNOSTIC PROCEDURES"

### Our Abpromise to you: Quality guaranteed and expert technical support

---

- Replacement or refund for products not performing as stated on the datasheet
- Valid for 12 months from date of delivery
- Response to your inquiry within 24 hours
- We provide support in Chinese, English, French, German, Japanese and Spanish
- Extensive multi-media technical resources to help you
- We investigate all quality concerns to ensure our products perform to the highest standards

If the product does not perform as described on this datasheet, we will offer a refund or replacement. For full details of the Abpromise, please visit <https://www.abcam.com/abpromise> or contact our technical team.

### Terms and conditions

---

- Guarantee only valid for products bought direct from Abcam or one of our authorized distributors