




Product datasheet

Anti-CEBPE antibody ab246861

4 Images

Overview

Product name	Anti-CEBPE antibody
Description	Rabbit polyclonal to CEBPE
Host species	Rabbit
Tested applications	Suitable for: ICC/IF, IHC-P, WB
Species reactivity	Reacts with: Human Predicted to work with: Mouse, Rat, Sheep 
Immunogen	Recombinant fragment corresponding to Human CEBPE aa 1-150. Database link: Q15744  Run BLAST with  Run BLAST with
Positive control	WB: CEBPE with C-terminal myc-DDK tag overexpressed in HEK-293T, whole cell lysate. IHC-P: Human bone marrow tissue. ICC/IF: U-251 MG cells.
General notes	<p>The Life Science industry has been in the grips of a reproducibility crisis for a number of years. Abcam is leading the way in addressing this with our range of recombinant monoclonal antibodies and knockout edited cell lines for gold-standard validation. Please check that this product meets your needs before purchasing.</p> <p>If you have any questions, special requirements or concerns, please send us an inquiry and/or contact our Support team ahead of purchase. Recommended alternatives for this product can be found below, along with publications, customer reviews and Q&As</p>

Properties

Form	Liquid
Storage instructions	Shipped at 4°C. Store at +4°C short term (1-2 weeks). Upon delivery aliquot. Store at -20°C long term. Avoid freeze / thaw cycle.
Storage buffer	pH: 7.20 Preservative: 0.02% Sodium azide Constituents: 40% Glycerol (glycerin, glycerine), PBS
Purity	Immunogen affinity purified
Clonality	Polyclonal
Isotype	IgG

Applications

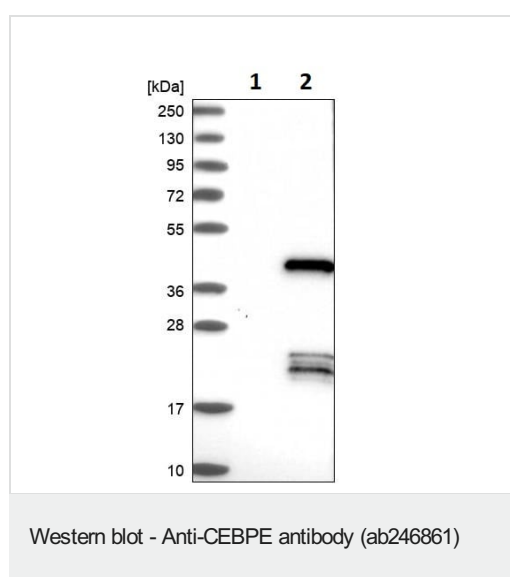
The Abpromise guarantee Our **Abpromise guarantee** covers the use of ab246861 in the following tested applications. The application notes include recommended starting dilutions; optimal dilutions/concentrations should be determined by the end user.

Application	Abreviews	Notes
ICC/IF		Use a concentration of 0.25 - 2 µg/ml. Fixation/Permeabilization: PFA/Triton X-100.
IHC-P		1/50 - 1/200. Perform heat mediated antigen retrieval with citrate buffer pH 6 before commencing with IHC staining protocol.
WB		Use a concentration of 0.04 - 0.4 µg/ml. Predicted molecular weight: 31 kDa.

Target

Function	C/EBP are DNA-binding proteins that recognize two different motifs: the CCAAT homology common to many promoters and the enhanced core homology common to many enhancers.
Tissue specificity	Strongest expression occurs in promyelocyte and late-myeloblast-like cell lines.
Sequence similarities	Belongs to the bZIP family, C/EBP subfamily. Contains 1 bZIP domain.
Post-translational modifications	Phosphorylated.
Cellular localization	Nucleus.

Images

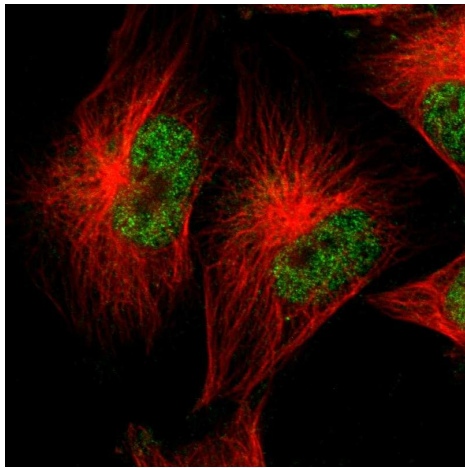


All lanes : Anti-CEBPE antibody (ab246861) at 0.4 µg

Lane 1 : Vector only transfected HEK-293T (human epithelial cell line from embryonic kidney transformed with large T antigen) whole cell lysate

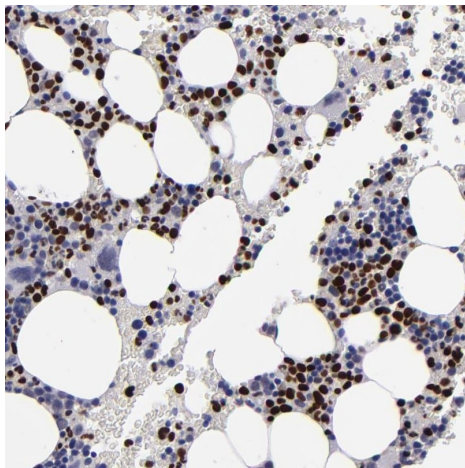
Lane 2 : CEBPE with C-terminal myc-DDK tag overexpressed in HEK-293T, whole cell lysate.

Predicted band size: 31 kDa



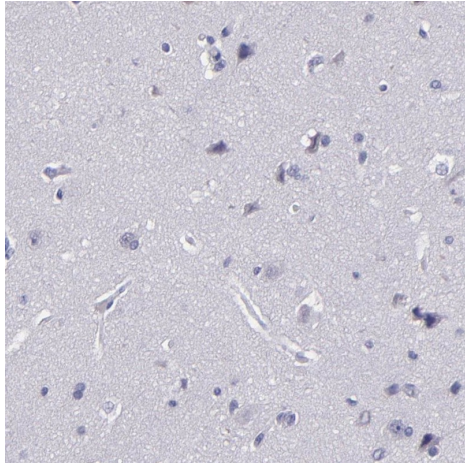
Immunocytochemistry/ Immunofluorescence - Anti-CEBPE antibody (ab246861)

PFA-fixed, Triton X-100 permeabilized U-251 MG (human brain glioma cell line) cells stained for CEBPE (green) using ab246861 at 4 $\mu\text{g/ml}$ in ICC/IF.



Immunohistochemistry (Formalin/PFA-fixed paraffin-embedded sections) - Anti-CEBPE antibody (ab246861)

Paraffin-embedded human bone marrow tissue stained for CEBPE using ab246861 at 1/50 dilution in immunohistochemical analysis.



Paraffin-embedded human cerebral cortex tissue stained for CEBPE using ab246861 at 1/50 dilution in immunohistochemical analysis. Low expression, as expected.

Immunohistochemistry (Formalin/PFA-fixed paraffin-embedded sections) - Anti-CEBPE antibody (ab246861)

Please note: All products are "FOR RESEARCH USE ONLY. NOT FOR USE IN DIAGNOSTIC PROCEDURES"

Our Abpromise to you: Quality guaranteed and expert technical support

- Replacement or refund for products not performing as stated on the datasheet
- Valid for 12 months from date of delivery
- Response to your inquiry within 24 hours
- We provide support in Chinese, English, French, German, Japanese and Spanish
- Extensive multi-media technical resources to help you
- We investigate all quality concerns to ensure our products perform to the highest standards

If the product does not perform as described on this datasheet, we will offer a refund or replacement. For full details of the Abpromise, please visit <https://www.abcam.com/abpromise> or contact our technical team.

Terms and conditions

- Guarantee only valid for products bought direct from Abcam or one of our authorized distributors