


Product datasheet

Anti-CELF-6 antibody [EPR10155] ab173282

Recombinant **RabMAb**

[1 References](#) [4 Images](#)

Overview

Product name	Anti-CELF-6 antibody [EPR10155]
Description	Rabbit monoclonal [EPR10155] to CELF-6
Host species	Rabbit
Tested applications	Suitable for: Flow Cyt (Intra), IHC-P, WB Unsuitable for: ICC/IF or IP
Species reactivity	Reacts with: Human Predicted to work with: Mouse, Rat 
Immunogen	Synthetic peptide within Human CELF-6 aa 300-400 (Cysteine residue). The exact sequence is proprietary. Database link: Q96J87 (Peptide available as ab202757)
Positive control	Human fetal kidney and fetal brain lysates; HepG2 and 293T cell lysates; Human kidney tissue; 29T cells.
General notes	This product is a recombinant monoclonal antibody, which offers several advantages including: <ul style="list-style-type: none"> - High batch-to-batch consistency and reproducibility - Improved sensitivity and specificity - Long-term security of supply - Animal-free production For more information see here . Our RabMAb [®] technology is a patented hybridoma-based technology for making rabbit monoclonal antibodies. For details on our patents, please refer to RabMAb[®] patents .

Properties

Form	Liquid
Storage instructions	Shipped at 4°C. Store at +4°C short term (1-2 weeks). Upon delivery aliquot. Store at -20°C long term. Avoid freeze / thaw cycle.
Storage buffer	pH: 7.20 Preservative: 0.01% Sodium azide Constituents: 9% PBS, 40% Glycerol (glycerin, glycerine), 0.05% BSA, 50% Tissue culture

	supernatant
Purity	Protein A purified
Clonality	Monoclonal
Clone number	EPR10155
Isotype	IgG

Applications

The Abpromise guarantee Our **Abpromise guarantee** covers the use of ab173282 in the following tested applications. The application notes include recommended starting dilutions; optimal dilutions/concentrations should be determined by the end user.

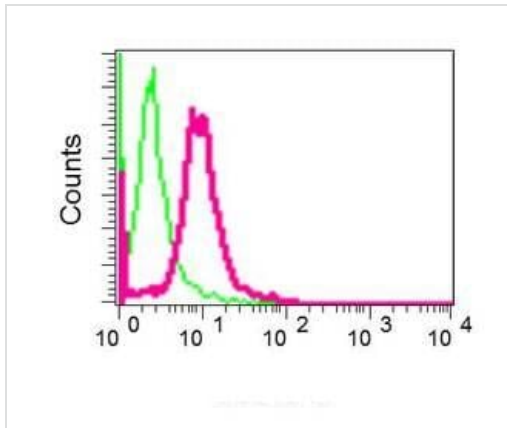
Application	Abreviews	Notes
Flow Cyt (Intra)		1/10 - 1/100. ab172730 - Rabbit monoclonal IgG, is suitable for use as an isotype control with this antibody.
IHC-P		1/50 - 1/100. Perform heat mediated antigen retrieval with citrate buffer pH 6 before commencing with IHC staining protocol. The use of an HRP/AP polymerized secondary antibody is recommended.
WB		1/1000 - 1/5000. Predicted molecular weight: 50 kDa. Can be blocked with CELF-6 peptide (ab202757) .

Application notes Is unsuitable for ICC/IF or IP.

Target

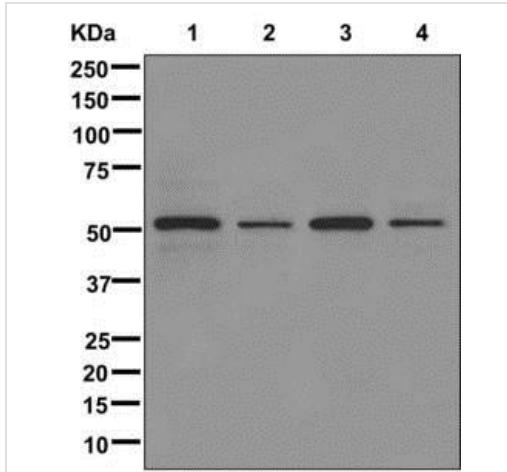
Function	RNA-binding protein implicated in the regulation of pre-mRNA alternative splicing. Mediates exon inclusion and/or exclusion in pre-mRNA that are subject to tissue-specific and developmentally regulated alternative splicing. Specifically activates exon 5 inclusion of TNNT2 in a muscle-specific splicing enhancer (MSE)-dependent manner. Promotes also exon exclusion of INSR pre-mRNA.
Tissue specificity	Expressed mainly in kidney, brain and testis and present in other tissues albeit at lower levels. Also expressed in fetal kidney.
Sequence similarities	Belongs to the CELF/BRUNOL family. Contains 3 RRM (RNA recognition motif) domains.
Cellular localization	Nucleus. Cytoplasm.

Images



Intracellular Flow Cytometry analysis of permeabilized 293T cells labeling CELF-6 (red), using ab173282 at a 1/10 dilution, or negative control rabbit IgG (green)

Flow Cytometry (Intracellular) - Anti-CELF-6 antibody [EPR10155] (ab173282)



All lanes : Anti-CELF-6 antibody [EPR10155] (ab173282) at 1/1000 dilution

Lane 1 : Human fetal kidney lysate

Lane 2 : Human fetal brain lysate

Lane 3 : HepG2 cell lysate

Lane 4 : 293T cell lysate

Lysates/proteins at 10 µg per lane.

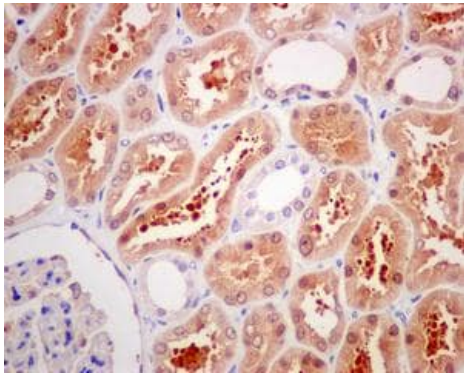
Secondary

All lanes : Goat anti-rabbit HRP at 1/2000 dilution

Developed using the ECL technique.

Predicted band size: 50 kDa

Western blot - Anti-CELF-6 antibody [EPR10155] (ab173282)

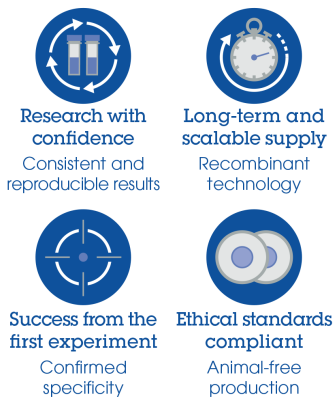


Immunohistochemistry (Formalin/PFA-fixed paraffin-embedded sections) - Anti-CELF-6 antibody [EPR10155] (ab173282)

Immunohistochemical analysis of formalin-fixed, paraffin-embedded Human kidney tissue, labeling CELF-6 using ab173282 at a 1/50 dilution.

Perform heat mediated antigen retrieval with citrate buffer pH 6 before commencing with IHC staining protocol.

Why choose a recombinant antibody?



Anti-CELF-6 antibody [EPR10155] (ab173282)

Please note: All products are "FOR RESEARCH USE ONLY. NOT FOR USE IN DIAGNOSTIC PROCEDURES"

Our Abpromise to you: Quality guaranteed and expert technical support

- Replacement or refund for products not performing as stated on the datasheet
- Valid for 12 months from date of delivery
- Response to your inquiry within 24 hours
- We provide support in Chinese, English, French, German, Japanese and Spanish
- Extensive multi-media technical resources to help you
- We investigate all quality concerns to ensure our products perform to the highest standards

If the product does not perform as described on this datasheet, we will offer a refund or replacement. For full details of the Abpromise, please visit <https://www.abcam.com/abpromise> or contact our technical team.

Terms and conditions

- Guarantee only valid for products bought direct from Abcam or one of our authorized distributors