


## Product datasheet

# Anti-Cellular Apoptosis Susceptibility/CSE1L antibody ab96755

★★★★★ [1 Abreviews](#) [10 References](#) [5 Images](#)

### Overview

---

<b>Product name</b>	Anti-Cellular Apoptosis Susceptibility/CSE1L antibody
<b>Description</b>	Rabbit polyclonal to Cellular Apoptosis Susceptibility/CSE1L
<b>Host species</b>	Rabbit
<b>Tested applications</b>	<b>Suitable for:</b> WB, IHC-P, ICC/IF
<b>Species reactivity</b>	<b>Reacts with:</b> Mouse, Rat, Human <b>Predicted to work with:</b> Cow, Zebrafish 
<b>Immunogen</b>	Recombinant fragment corresponding to Human Cellular Apoptosis Susceptibility/CSE1L aa 222-439. Database link: <a href="#">NP_001307</a>
<b>Positive control</b>	WB: HEK-293T, A431, H1299, HeLa whole cell lysate. PC-12 and Rat2 whole cell lysate. NIH/3T3, JC, BCL-1 and C2C12 whole cell lysate. IHC-P: Cal27 Xenograft. ICC/IF: HeLa cells.
<b>General notes</b>	<p>The Life Science industry has been in the grips of a reproducibility crisis for a number of years. Abcam is leading the way in addressing this with our range of recombinant monoclonal antibodies and knockout edited cell lines for gold-standard validation. Please check that this product meets your needs before purchasing.</p> <p>If you have any questions, special requirements or concerns, please send us an inquiry and/or contact our Support team ahead of purchase. Recommended alternatives for this product can be found below, along with publications, customer reviews and Q&amp;As</p>

### Properties

---

<b>Form</b>	Liquid
<b>Storage instructions</b>	Shipped at 4°C. Store at +4°C short term (1-2 weeks). Upon delivery aliquot. Store at -20°C or -80°C. Avoid freeze / thaw cycle.
<b>Storage buffer</b>	pH: 7.00 Preservative: 0.025% Proclin 300 Constituents: 79% PBS, 20% Glycerol (glycerin, glycerine)
<b>Purity</b>	Immunogen affinity purified
<b>Clonality</b>	Polyclonal

Isotype

IgG

## Applications

### The Abpromise guarantee

Our **Abpromise guarantee** covers the use of ab96755 in the following tested applications.

The application notes include recommended starting dilutions; optimal dilutions/concentrations should be determined by the end user.

Application	Abreviews	Notes
WB	★★★★★ (1)	1/1000 - 1/20000. Predicted molecular weight: 110 kDa.
IHC-P		1/100 - 1/2000. Suggested antigen retrieval using heat mediated 10mM Citrate buffer (pH6.0) or Tris-EDTA buffer (pH 8.0)
ICC/IF		1/100 - 1/1000.

## Target

### Function

Export receptor for importin-alpha. Mediates importin-alpha re-export from the nucleus to the cytoplasm after import substrates (cargos) have been released into the nucleoplasm. In the nucleus binds cooperatively to importin-alpha and to the GTPase Ran in its active GTP-bound form. Docking of this trimeric complex to the nuclear pore complex (NPC) is mediated through binding to nucleoporins. Upon transit of a nuclear export complex into the cytoplasm, disassembling of the complex and hydrolysis of Ran-GTP to Ran-GDP (induced by RANBP1 and RANGAP1, respectively) cause release of the importin-alpha from the export receptor. CSE1L/XPO2 then return to the nuclear compartment and mediate another round of transport. The directionality of nuclear export is thought to be conferred by an asymmetric distribution of the GTP- and GDP-bound forms of Ran between the cytoplasm and nucleus.

### Tissue specificity

Highly expressed in proliferating cells.

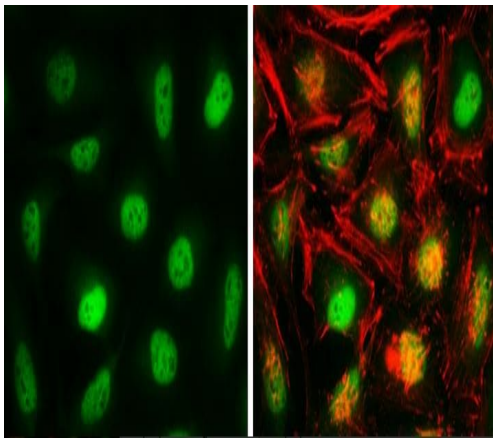
### Sequence similarities

Belongs to the XPO2/CSE1 family.  
Contains 1 importin N-terminal domain.

### Cellular localization

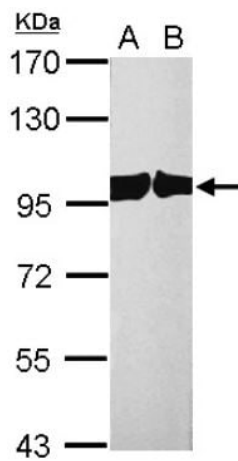
Cytoplasm. Nucleus. Shuttles between the nucleus and the cytoplasm.

## Images



Immunocytochemistry/ Immunofluorescence - Anti-Cellular Apoptosis Susceptibility/CSE1L antibody (ab96755)

HeLa cells stained for CSE1L (green) using ab96755 at 1/2000 dilution in ICC/IF.



Western blot - Anti-Cellular Apoptosis Susceptibility/CSE1L antibody (ab96755)

**All lanes** : Anti-Cellular Apoptosis Susceptibility/CSE1L antibody (ab96755) at 1/10000 dilution

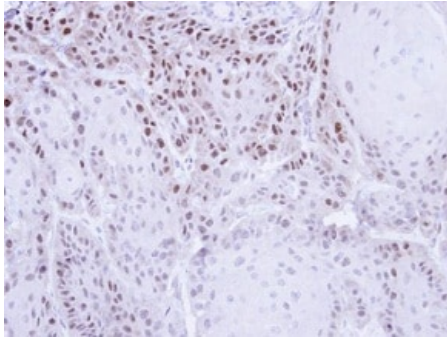
**Lane 1** : PC-12 whole cell lysate

**Lane 2** : Rat2 whole cell lysate

Lysates/proteins at 30 µg per lane.

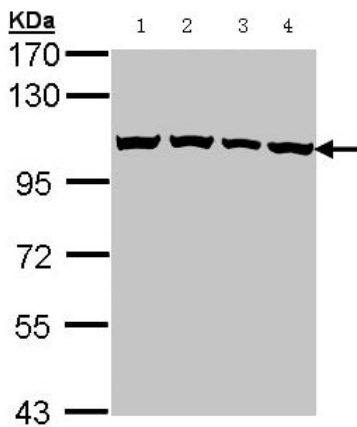
**Predicted band size:** 110 kDa

7.5% SDS-PAGE



Immunohistochemistry (Formalin/PFA-fixed paraffin-embedded sections) - Anti-Cellular Apoptosis Susceptibility/CSE1L antibody (ab96755)

Immunohistochemical analysis of paraffin-embedded Cal27 Xenograft using ab96755 at 1/500 dilution.



Western blot - Anti-Cellular Apoptosis Susceptibility/CSE1L antibody (ab96755)

**All lanes** : Anti-Cellular Apoptosis Susceptibility/CSE1L antibody (ab96755) at 1/1000 dilution

**Lane 1** : HEK-293T whole cell lysate

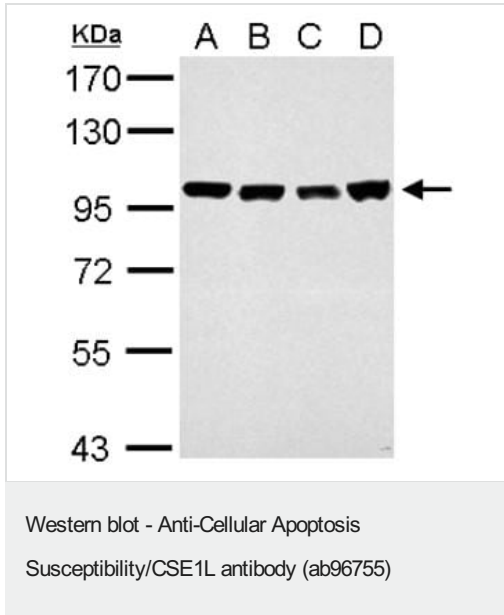
**Lane 2** : A431 whole cell lysate

**Lane 3** : H1299 whole cell lysate

**Lane 4** : HeLa whole cell lysate

Lysates/proteins at 30 µg per lane.

**Predicted band size:** 110 kDa



**All lanes :** Anti-Cellular Apoptosis Susceptibility/CSE1L antibody (ab96755) at 1/10000 dilution

**Lane 1 :** NIH/3T3 whole cell lysate

**Lane 2 :** JC whole cell lysate

**Lane 3 :** BCL-1 whole cell lysate

**Lane 4 :** C2C12 whole cell lysate

Lysates/proteins at 30 µg per lane.

**Predicted band size:** 110 kDa

7.5% SDS-PAGE

**Please note:** All products are "FOR RESEARCH USE ONLY. NOT FOR USE IN DIAGNOSTIC PROCEDURES"

### Our Abpromise to you: Quality guaranteed and expert technical support

- Replacement or refund for products not performing as stated on the datasheet
- Valid for 12 months from date of delivery
- Response to your inquiry within 24 hours
- We provide support in Chinese, English, French, German, Japanese and Spanish
- Extensive multi-media technical resources to help you
- We investigate all quality concerns to ensure our products perform to the highest standards

If the product does not perform as described on this datasheet, we will offer a refund or replacement. For full details of the Abpromise, please visit <https://www.abcam.com/abpromise> or contact our technical team.

### Terms and conditions

- Guarantee only valid for products bought direct from Abcam or one of our authorized distributors