


## Product datasheet

# Anti-Cenexin1/ODF2 antibody ab125192

2 Images

### Overview

---

<b>Product name</b>	Anti-Cenexin1/ODF2 antibody
<b>Description</b>	Rabbit polyclonal to Cenexin1/ODF2
<b>Host species</b>	Rabbit
<b>Tested applications</b>	<b>Suitable for:</b> WB, IP
<b>Species reactivity</b>	<b>Reacts with:</b> Human <b>Predicted to work with:</b> Mouse, Rat, Horse, Guinea pig, Dog, Pig, Chimpanzee, Rhesus monkey, Chinese hamster, Orangutan, Bat 
<b>Immunogen</b>	Synthetic peptide, corresponding to a region within amino acids 150-200 of Human Cenexin1/ODF2 (NP_702911.1).
<b>Positive control</b>	HeLa whole cell lysate 293T whole cell lysate
<b>General notes</b>	<p>The Life Science industry has been in the grips of a reproducibility crisis for a number of years. Abcam is leading the way in addressing this with our range of recombinant monoclonal antibodies and knockout edited cell lines for gold-standard validation. Please check that this product meets your needs before purchasing.</p> <p>If you have any questions, special requirements or concerns, please send us an inquiry and/or contact our Support team ahead of purchase. Recommended alternatives for this product can be found below, along with publications, customer reviews and Q&amp;As</p>

### Properties

---

<b>Form</b>	Liquid
<b>Storage instructions</b>	Shipped at 4°C. Store at -20°C. The product can be stored for up to 12 months.
<b>Storage buffer</b>	pH: 7 Preservative: 0.09% Sodium azide Constituent: 99% Tris citrate/phosphate  pH 7 to 8
<b>Purity</b>	Immunogen affinity purified
<b>Clonality</b>	Polyclonal
<b>Isotype</b>	IgG

## Applications

---

**The Abpromise guarantee** Our **Abpromise guarantee** covers the use of ab125192 in the following tested applications. The application notes include recommended starting dilutions; optimal dilutions/concentrations should be determined by the end user.

Application	Abreviews	Notes
WB		1/2000 - 1/10000. Predicted molecular weight: 95 kDa.
IP		Use at 2-10 µg/mg of lysate.

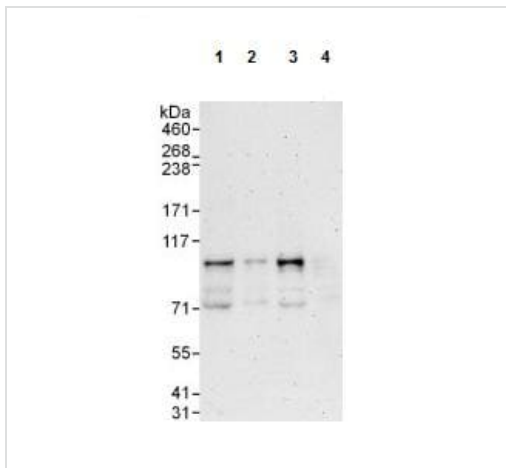
## Target

---

<b>Function</b>	Seems to be a major component of sperm tail outer dense fibers (ODF). ODFs are filamentous structures located on the outside of the axoneme in the midpiece and principal piece of the mammalian sperm tail and may help to maintain the passive elastic structures and elastic recoil of the sperm tail. May have a modulating influence on sperm motility. Functions as a general scaffold protein that is specifically localized at the distal/subdistal appendages of mother centrioles. Component of the centrosome matrix required for the localization of PLK1 and NIN to the centrosomes. Required for the formation and/or maintenance of normal CETN1 assembly.
<b>Tissue specificity</b>	Testis-specific (at protein level). Highly expressed in cytoplasm of step 2 round spermatids. Detected in the middle piece and extends to about half the principal piece of the sperm tails.
<b>Sequence similarities</b>	Belongs to the ODF2 family.
<b>Post-translational modifications</b>	Tyrosine phosphorylated.
<b>Cellular localization</b>	Cytoplasm > cytoskeleton > centrosome. Cell projection > cilium. Cytoplasm > cytoskeleton > centrosome > centriole. Cytoplasm > cytoskeleton > spindle pole. Localized at the microtubule organizing centers in interphase and spindle poles in mitosis. Localized at the distal/subdistal appendages of mother centrioles.

## Images

---



Western blot - Anti-Cenexin1/ODF2 antibody  
(ab125192)

**All lanes :** Anti-Cenexin1/ODF2 antibody (ab125192) at 0.1 µg/ml

**Lane 1 :** HeLa whole cell lysate at 50 µg

**Lane 2 :** HeLa whole cell lysate at 15 µg

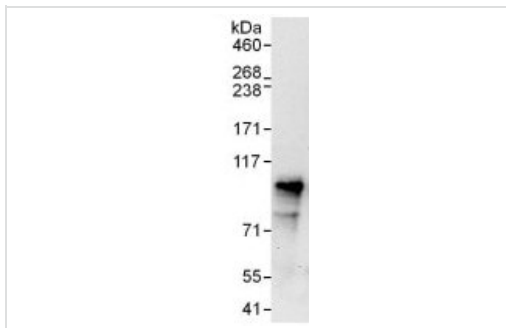
**Lane 3 :** 293T whole cell lysate at 50 µg

**Lane 4 :** Jurkat whole cell lysate at 50 µg

Developed using the ECL technique.

**Predicted band size:** 95 kDa

**Exposure time:** 3 minutes



Immunoprecipitation - Anti-Cenexin1/ODF2 antibody  
(ab125192)

**Immunoprecipitation :** 1 mg of HeLa cell lysate

immunoprecipitated with ab125192 at 6 µg/mg lysate; 20% of immunoprecipitate loaded in lane

**Western Blot:** Cenexin1/ODF2 antibody (ab125192) at 1 µg/ml

developed using the ECL technique

**Exposure time :** 30 seconds

**Please note:** All products are "FOR RESEARCH USE ONLY. NOT FOR USE IN DIAGNOSTIC PROCEDURES"

### Our Abpromise to you: Quality guaranteed and expert technical support

- Replacement or refund for products not performing as stated on the datasheet
- Valid for 12 months from date of delivery
- Response to your inquiry within 24 hours
- We provide support in Chinese, English, French, German, Japanese and Spanish
- Extensive multi-media technical resources to help you
- We investigate all quality concerns to ensure our products perform to the highest standards

If the product does not perform as described on this datasheet, we will offer a refund or replacement. For full details of the Abpromise, please visit <https://www.abcam.com/abpromise> or contact our technical team.

### Terms and conditions

- Guarantee only valid for products bought direct from Abcam or one of our authorized distributors