

Anti-Cenexin1/ODF2 antibody ab43840

★★★★☆ [4 Abreviews](#) [31 References](#) [3 Images](#)

Overview

Product name	Anti-Cenexin1/ODF2 antibody
Description	Rabbit polyclonal to Cenexin1/ODF2
Host species	Rabbit
Specificity	On the basis of the immunogen sequence, we would expect this antibody to recognise the following isoforms of Cenexin1/ODF2 as listed in Swissprot: Q5BJF6-1 (95 kDa), Q5BJF6-2 (89 kDa), Q5BJF6-3 (93 kDa), and Q5BJF6-4 (95 kDa).
Tested applications	Suitable for: WB, ICC/IF
Species reactivity	Reacts with: Mouse, Human
Immunogen	Synthetic peptide corresponding to Human Cenexin1/ODF2 aa 800 to the C-terminus (C terminal) conjugated to keyhole limpet haemocyanin. (Peptide available as ab43839)
General notes	<p>The Life Science industry has been in the grips of a reproducibility crisis for a number of years. Abcam is leading the way in addressing this with our range of recombinant monoclonal antibodies and knockout edited cell lines for gold-standard validation. Please check that this product meets your needs before purchasing.</p> <p>If you have any questions, special requirements or concerns, please send us an inquiry and/or contact our Support team ahead of purchase. Recommended alternatives for this product can be found below, along with publications, customer reviews and Q&As</p>

Properties

Form	Liquid
Storage instructions	Shipped at 4°C. Store at +4°C short term (1-2 weeks). Upon delivery aliquot. Store at -20°C or -80°C. Avoid freeze / thaw cycle.
Storage buffer	<p>pH: 7.40</p> <p>Preservative: 0.02% Sodium azide</p> <p>Constituent: PBS</p> <p>Batches of this product that have a concentration < 1mg/ml may have BSA added as a stabilising agent. If you would like information about the formulation of a specific lot, please contact our scientific support team who will be happy to help.</p>
Purity	Immunogen affinity purified

Clonality	Polyclonal
Isotype	IgG

Applications

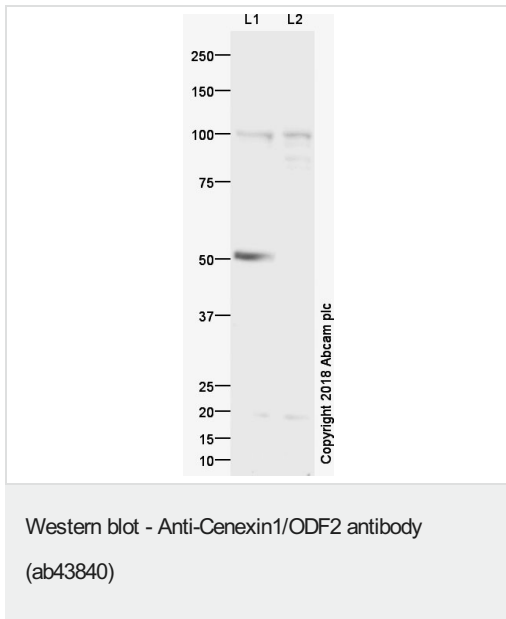
The Abpromise guarantee Our **Abpromise guarantee** covers the use of ab43840 in the following tested applications. The application notes include recommended starting dilutions; optimal dilutions/concentrations should be determined by the end user.

Application	Abreviews	Notes
WB	★★★★★ (1)	Use a concentration of 1 µg/ml.
ICC/IF	★★★★★ (3)	1/400.

Target

Function	Seems to be a major component of sperm tail outer dense fibers (ODF). ODFs are filamentous structures located on the outside of the axoneme in the midpiece and principal piece of the mammalian sperm tail and may help to maintain the passive elastic structures and elastic recoil of the sperm tail. May have a modulating influence on sperm motility. Functions as a general scaffold protein that is specifically localized at the distal/subdistal appendages of mother centrioles. Component of the centrosome matrix required for the localization of PLK1 and NIN to the centrosomes. Required for the formation and/or maintenance of normal CETN1 assembly.
Tissue specificity	Testis-specific (at protein level). Highly expressed in cytoplasm of step 2 round spermatids. Detected in the middle piece and extends to about half the principal piece of the sperm tails.
Sequence similarities	Belongs to the ODF2 family.
Post-translational modifications	Tyrosine phosphorylated.
Cellular localization	Cytoplasm > cytoskeleton > centrosome. Cell projection > cilium. Cytoplasm > cytoskeleton > centrosome > centriole. Cytoplasm > cytoskeleton > spindle pole. Localized at the microtubule organizing centers in interphase and spindle poles in mitosis. Localized at the distal/subdistal appendages of mother centrioles.

Images



All lanes : ab43840 at 1 µg/ml

Lane 1 : HeLa (Human epithelial carcinoma cell line) Whole Cell Lysate at 25 µg

Lane 2 : MCF7 (Human breast adenocarcinoma) at 10 µg

Secondary

All lanes : Goat polyclonal to Rabbit IgG - H&L - Pre-Adsorbed (HRP) ([ab65484](#)) at 1/3000 dilution

Developed using the ECL technique.

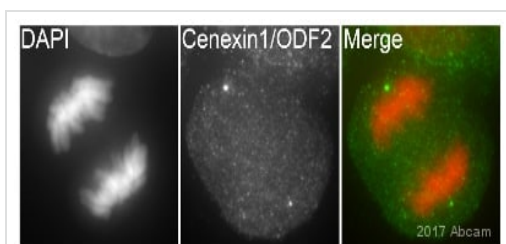
Performed under reducing conditions.

Predicted band size: 93 kDa

Observed band size: 100 kDa

Exposure time: 20 minutes

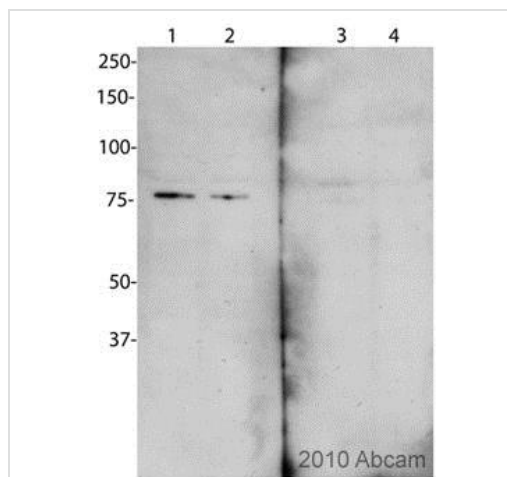
Abcam recommends using milk as the blocking agent. Abcam welcomes customer feedback and would appreciate any comments regarding this product and the data presented above.



Immunocytochemistry/ Immunofluorescence - Anti-Cenexin1/ODF2 antibody (ab43840)

This image is courtesy of an Abreview submitted by Kirk McManus, Univ. of Manitoba/Cancer Care MCB.

Immunocytochemistry/ Immunofluorescence analysis of human HCT116 cells labeling Cenexin1/ODF2 with ab43840 at 1/400 dilution. Cells were fixed in formaldehyde and permeabilized with 0.5% Triton X-100 in PBS. Staining with ab43840 at 1/400 was carried out for 1 hour at 22°C in PBS buffer. [ab150081](#), a Goat Anti-Rabbit IgG H&L (Alexa Fluor® 488) preadsorbed secondary antibody was used at 1/200 dilution. DAPI was used to counterstain.



Western blot - Anti-Cenexin1/ODF2 antibody (ab43840)

Image courtesy of an anonymous abreview.

All lanes : Anti-Cenexin1/ODF2 antibody (ab43840) at 1/500 dilution

Lane 1 : 25 ug HeLa cell lysate

Lane 2 : 12.5 ug HeLa cell lysate

Lane 3 : 25 ug HeLa cell lysate with Human Cenexin1/ODF2 peptide (**ab43839**) at 4 µg/ml

Lane 4 : 12.5 ug HeLa cell lysate with Human Cenexin1/ODF2 peptide (**ab43839**) at 4 µg/ml

Secondary

All lanes : Anti-Rabbit IgG HRP-conjugated at 1/5000 dilution

Developed using the ECL technique.

Performed under reducing conditions.

Predicted band size: 93 kDa

Observed band size: ~75 kDa

Exposure time: 4 minutes

Detection of Cenexin 1 by ab43840 in Western blot of HeLa cell lysates. Please see anonymous abreview for further details.

Please note: All products are "FOR RESEARCH USE ONLY. NOT FOR USE IN DIAGNOSTIC PROCEDURES"

Our Abpromise to you: Quality guaranteed and expert technical support

- Replacement or refund for products not performing as stated on the datasheet
- Valid for 12 months from date of delivery
- Response to your inquiry within 24 hours
- We provide support in Chinese, English, French, German, Japanese and Spanish
- Extensive multi-media technical resources to help you
- We investigate all quality concerns to ensure our products perform to the highest standards

If the product does not perform as described on this datasheet, we will offer a refund or replacement. For full details of the Abpromise, please visit <https://www.abcam.com/abpromise> or contact our technical team.

Terms and conditions

- Guarantee only valid for products bought direct from Abcam or one of our authorized distributors