

Product datasheet

Anti-Centaurin alpha 1 antibody ab27476

[4 References](#) [2 Images](#)

Overview

Product name	Anti-Centaurin alpha 1 antibody
Description	Goat polyclonal to Centaurin alpha 1
Host species	Goat
Tested applications	Suitable for: IHC-P, WB
Species reactivity	Reacts with: Mouse, Rat, Human, Pig
Immunogen	Synthetic peptide: CQEYAVEAHFKHKP , corresponding to amino acids 362-374 of Human Centaurin alpha 1. Run BLAST with Run BLAST with

General notes	<p>The Life Science industry has been in the grips of a reproducibility crisis for a number of years. Abcam is leading the way in addressing this with our range of recombinant monoclonal antibodies and knockout edited cell lines for gold-standard validation. Please check that this product meets your needs before purchasing.</p> <p>If you have any questions, special requirements or concerns, please send us an inquiry and/or contact our Support team ahead of purchase. Recommended alternatives for this product can be found below, along with publications, customer reviews and Q&As</p>
----------------------	---

Properties

Form	Liquid
Storage instructions	Shipped at 4°C. Upon delivery aliquot and store at -20°C. Avoid freeze / thaw cycles.
Storage buffer	pH: 7.30 Preservative: 0.02% Sodium azide Constituents: 0.5% Tris, 0.5% BSA
Purity	Immunogen affinity purified
Purification notes	This antibody was purified from goat serum by ammonium sulphate precipitation followed by antigen affinity chromatography using the immunizing peptide.
Clonality	Polyclonal
Isotype	IgG

Applications

The Abpromise guarantee

Our **Abpromise guarantee** covers the use of ab27476 in the following tested applications.

The application notes include recommended starting dilutions; optimal dilutions/concentrations should be determined by the end user.

Application	Abreviews	Notes
IHC-P		Use at an assay dependent concentration.
WB		Use a concentration of 1 - 3 µg/ml. Detects a band of approximately 40 kDa (predicted molecular weight: 43 kDa). 1 hour primary incubation is recommended for this product.

Target

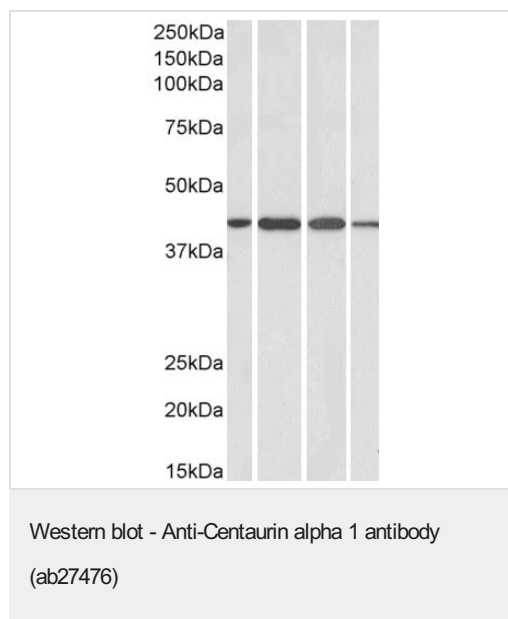
Relevance

The centaurin alpha 1 protein is a high affinity PtdIns(3,4,5)P3 binding protein enriched in brain. By acting as a GTPase activating protein for ADP ribosylation factor 6 (ARF6), centaurin alpha 1 is able to switch off ARF6 and inhibit its ability to mediate beta 2 adrenoceptor internalization and negatively regulates ARF6 activity by functioning as an in vivo PIP3 dependent ARF6 GAP.

Cellular localization

Cytoplasmic, Nuclear and Plasma membrane

Images



All lanes : Anti-Centaurin alpha 1 antibody (ab27476) at 1 µg/ml

Lane 1 : Human brain tissue lysate

Lane 2 : Mouse brain tissue lysate

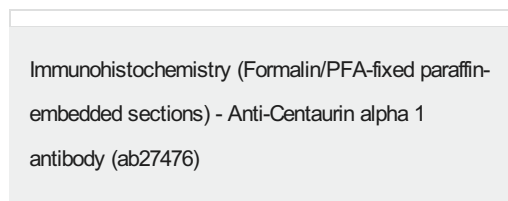
Lane 3 : Rat brain tissue lysate

Lane 4 : Pig brain tissue lysate

Lysates/proteins at 35 µg per lane.

Predicted band size: 43 kDa

Primary incubation was 1 hour. Detected by chemiluminescence.



IHC image of ab27476 staining in human normal hippocampus formalin fixed paraffin embedded tissue section, performed on a Leica Bond™ system using the standard protocol B. The section was pre-treated using heat mediated antigen retrieval with sodium citrate buffer (pH6, epitope retrieval solution 1) for 20 mins. The section was then incubated with ab27476, 10µg/ml, for 15 mins at room temperature and detected using an HRP conjugated compact

polymer system. DAB was used as the chromogen. The section was then counterstained with haematoxylin and mounted with DPX.

For other IHC staining systems (automated and non-automated) customers should optimize variable parameters such as antigen retrieval conditions, primary antibody concentration and antibody incubation times.

Please note: All products are "FOR RESEARCH USE ONLY. NOT FOR USE IN DIAGNOSTIC PROCEDURES"

Our Abpromise to you: Quality guaranteed and expert technical support

- Replacement or refund for products not performing as stated on the datasheet
- Valid for 12 months from date of delivery
- Response to your inquiry within 24 hours
- We provide support in Chinese, English, French, German, Japanese and Spanish
- Extensive multi-media technical resources to help you
- We investigate all quality concerns to ensure our products perform to the highest standards

If the product does not perform as described on this datasheet, we will offer a refund or replacement. For full details of the Abpromise, please visit <https://www.abcam.com/abpromise> or contact our technical team.

Terms and conditions

- Guarantee only valid for products bought direct from Abcam or one of our authorized distributors