

Product datasheet

Anti-CEP350 antibody [CL3423] ab219831

[2 References](#) [6 Images](#)

Overview

Product name	Anti-CEP350 antibody [CL3423]
Description	Mouse monoclonal [CL3423] to CEP350
Host species	Mouse
Tested applications	Suitable for: ICC/IF, IHC-P
Species reactivity	Reacts with: Human
Immunogen	Recombinant fragment corresponding to Human CEP350 aa 1400-1550. Database link: Q5VT06 Run BLAST with Run BLAST with
Epitope	Binds to an epitope located within the peptide sequence LPDFVKQLRTRT as determined by overlapping synthetic peptides.
Positive control	IHC-P: Human breast cancer, placenta and colon tissues. ICC/IF: U251, A431 and U2OS cells.
General notes	<p>The Life Science industry has been in the grips of a reproducibility crisis for a number of years. Abcam is leading the way in addressing this with our range of recombinant monoclonal antibodies and knockout edited cell lines for gold-standard validation. Please check that this product meets your needs before purchasing.</p> <p>If you have any questions, special requirements or concerns, please send us an inquiry and/or contact our Support team ahead of purchase. Recommended alternatives for this product can be found below, along with publications, customer reviews and Q&As</p>

Properties

Form	Liquid
Storage instructions	Shipped at 4°C. Store at +4°C short term (1-2 weeks). Upon delivery aliquot. Store at -20°C long term. Avoid freeze / thaw cycle.
Storage buffer	pH: 7.20 Preservative: 0.02% Sodium azide Constituents: 40% Glycerol (glycerin, glycerine), 59% PBS
Purity	Protein A purified
Clonality	Monoclonal
Clone number	CL3423

Isotype

IgG1

Applications

The Abpromise guarantee

Our **Abpromise guarantee** covers the use of ab219831 in the following tested applications.

The application notes include recommended starting dilutions; optimal dilutions/concentrations should be determined by the end user.

Application	Abreviews	Notes
ICC/IF		Use a concentration of 2 - 10 µg/ml. Fixation/Permeabilization: PFA/Triton X-100.
IHC-P		1/50 - 1/200. Perform heat mediated antigen retrieval with citrate buffer pH 6 before commencing with IHC staining protocol.

Target

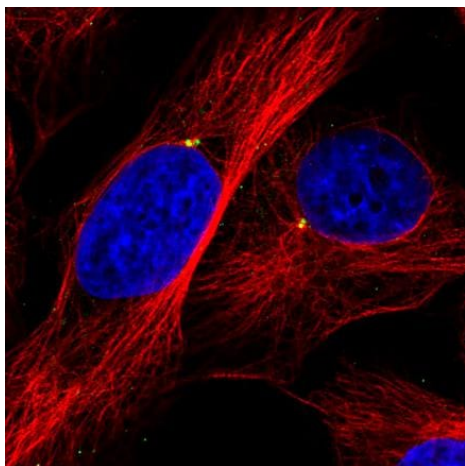
Relevance

CAP350, centrosome associated protein 350, is required for anchoring microtubules to the centrosomes and for the integrity of the microtubule network. It recruits PPARA to discrete subcellular compartments and thereby modulates PPARA activity.

Cellular localization

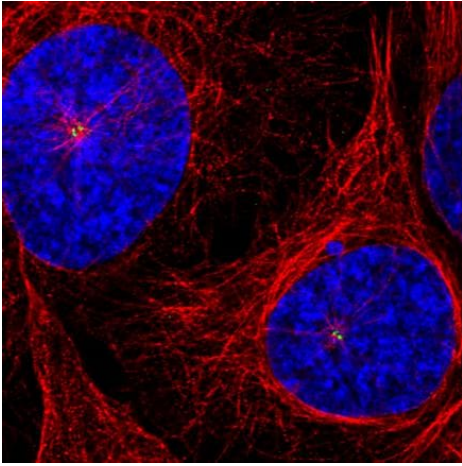
Centrosome. Spindle. Nucleus. Note=Associated with mitotic spindles. Nuclear, in discrete foci. Associated with intermediate filaments.

Images



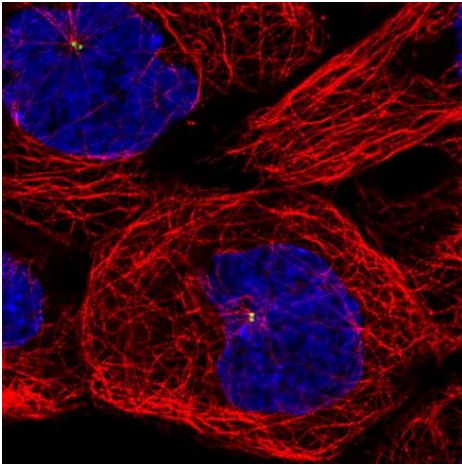
Immunofluorescent analysis of PFA-fixed, Triton X-100 permeabilized U251 cells labeling CEP350 with ab219831 at 4 µg/ml (green). Microtubule and nuclear probes are visualized in red and blue, respectively.

Immunocytochemistry/ Immunofluorescence - Anti-CEP350 antibody [CL3423] (ab219831)



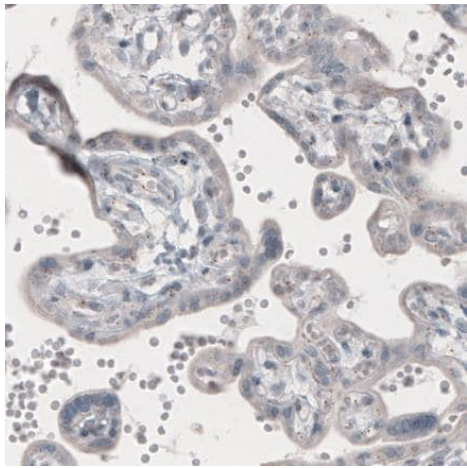
Immunocytochemistry/ Immunofluorescence - Anti-CEP350 antibody [CL3423] (ab219831)

Immunofluorescent analysis of PFA-fixed, Triton X-100 permeabilized U2OS cells labeling CEP350 with ab219831 at 4 $\mu\text{g/ml}$ (green). Microtubule and nuclear probes are visualized in red and blue, respectively.



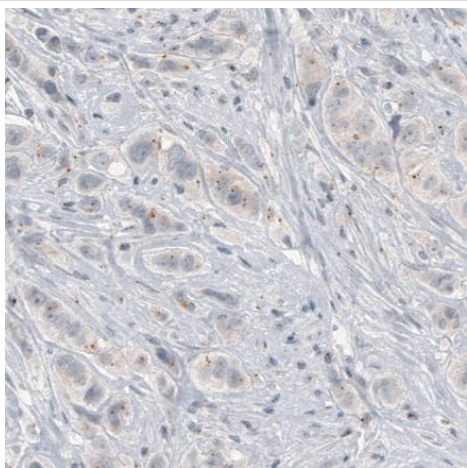
Immunocytochemistry/ Immunofluorescence - Anti-CEP350 antibody [CL3423] (ab219831)

Immunofluorescent analysis of PFA-fixed, Triton X-100 permeabilized A431 cells labeling CEP350 with ab219831 at 4 $\mu\text{g/ml}$ (green). Microtubule and nuclear probes are visualized in red and blue, respectively.



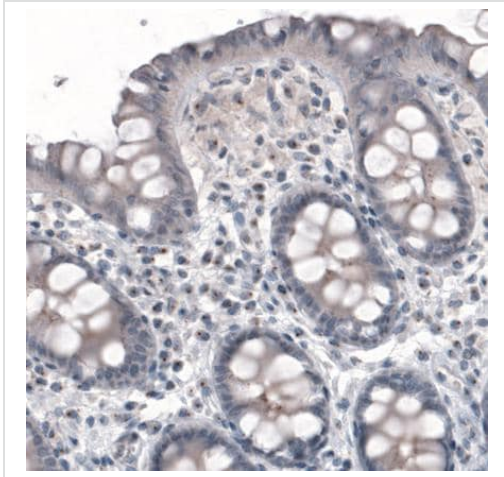
Immunohistochemical analysis of paraffin-embedded human placenta tissue labeling CEP350 with ab219831 at 1/50 dilution.

Immunohistochemistry (Formalin/PFA-fixed paraffin-embedded sections) - Anti-CEP350 antibody
[CL3423] (ab219831)



Immunohistochemical analysis of paraffin-embedded human breast cancer tissue labeling CEP350 with ab219831 at 1/50 dilution.

Immunohistochemistry (Formalin/PFA-fixed paraffin-embedded sections) - Anti-CEP350 antibody
[CL3423] (ab219831)



Immunohistochemical analysis of paraffin-embedded human colon tissue labeling CEP350 with ab219831 at 1/50 dilution.

Immunohistochemistry (Formalin/PFA-fixed paraffin-embedded sections) - Anti-CEP350 antibody [CL3423] (ab219831)

Please note: All products are "FOR RESEARCH USE ONLY. NOT FOR USE IN DIAGNOSTIC PROCEDURES"

Our Abpromise to you: Quality guaranteed and expert technical support

- Replacement or refund for products not performing as stated on the datasheet
- Valid for 12 months from date of delivery
- Response to your inquiry within 24 hours

- We provide support in Chinese, English, French, German, Japanese and Spanish
- Extensive multi-media technical resources to help you
- We investigate all quality concerns to ensure our products perform to the highest standards

If the product does not perform as described on this datasheet, we will offer a refund or replacement. For full details of the Abpromise, please visit <https://www.abcam.com/abpromise> or contact our technical team.

Terms and conditions

- Guarantee only valid for products bought direct from Abcam or one of our authorized distributors