


Product datasheet

Anti-Ceramide synthase 1/LAG1 antibody ab198799

[2 Images](#)

Overview

Product name	Anti-Ceramide synthase 1/LAG1 antibody
Description	Rabbit polyclonal to Ceramide synthase 1/LAG1
Host species	Rabbit
Tested applications	Suitable for: IHC-P
Species reactivity	Reacts with: Human Predicted to work with: Mouse 
Immunogen	Synthetic peptide corresponding to Human Ceramide synthase 1/LAG1. (Near the C terminal; NP_067090). Database link: P27544
Positive control	Human ovarian cancer and prostate cancer tissues.
General notes	<p>The Life Science industry has been in the grips of a reproducibility crisis for a number of years. Abcam is leading the way in addressing this with our range of recombinant monoclonal antibodies and knockout edited cell lines for gold-standard validation. Please check that this product meets your needs before purchasing.</p> <p>If you have any questions, special requirements or concerns, please send us an inquiry and/or contact our Support team ahead of purchase. Recommended alternatives for this product can be found below, along with publications, customer reviews and Q&As</p>

Properties

Form	Liquid
Storage instructions	Shipped at 4°C. Store at +4°C short term (1-2 weeks). Upon delivery aliquot. Store at -20°C long term. Avoid freeze / thaw cycle.
Storage buffer	pH: 7.4 Preservative: 0.05% Sodium azide Constituents: 49% PBS, 50% Glycerol
Purity	Immunogen affinity purified
Clonality	Polyclonal
Isotype	IgG

Applications

The Abpromise guarantee Our **Abpromise guarantee** covers the use of ab198799 in the following tested applications. The application notes include recommended starting dilutions; optimal dilutions/concentrations should be determined by the end user.

Application	Abreviews	Notes
IHC-P		1/50 - 1/200.

Target

Function

May be either a bona fide (dihydro)ceramide synthase or a modulator of its activity. When overexpressed in cells is involved in the production of sphingolipids containing mainly one fatty acid donor (N-linked stearyl- (C18) ceramide) in a fumonisin B1-independent manner.

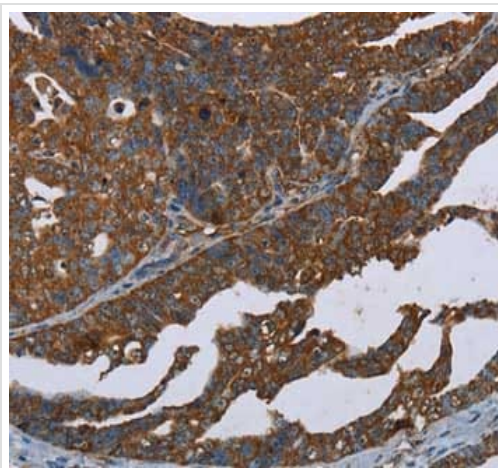
Sequence similarities

Contains 1 TLC (TRAM/LAG1/CLN8) domain.

Cellular localization

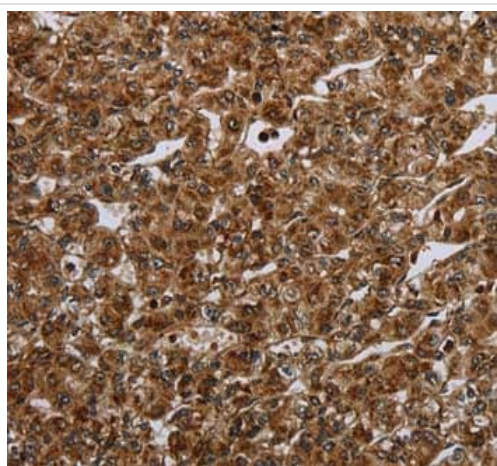
Endoplasmic reticulum membrane and Endoplasmic reticulum membrane. Golgi apparatus membrane. Isoform 1 may recycle from the Golgi to the endoplasmic reticulum.

Images



Immunohistochemical analysis of paraffin-embedded Human ovarian cancer tissue labeling Ceramide synthase 1/LAG1 with ab198799 at 1/20 dilution.

Immunohistochemistry (Formalin/PFA-fixed paraffin-embedded sections) - Anti-Ceramide synthase 1/LAG1 antibody (ab198799)



Immunohistochemical analysis of paraffin-embedded Human prostate cancer tissue labeling Ceramide synthase 1/LAG1 with ab198799 at 1/20 dilution.

Immunohistochemistry (Formalin/PFA-fixed paraffin-embedded sections) - Anti-Ceramide synthase 1/LAG1 antibody (ab198799)

Please note: All products are "FOR RESEARCH USE ONLY. NOT FOR USE IN DIAGNOSTIC PROCEDURES"

Our Abpromise to you: Quality guaranteed and expert technical support

- Replacement or refund for products not performing as stated on the datasheet
- Valid for 12 months from date of delivery
- Response to your inquiry within 24 hours

- We provide support in Chinese, English, French, German, Japanese and Spanish
- Extensive multi-media technical resources to help you
- We investigate all quality concerns to ensure our products perform to the highest standards

If the product does not perform as described on this datasheet, we will offer a refund or replacement. For full details of the Abpromise, please visit <https://www.abcam.com/abpromise> or contact our technical team.

Terms and conditions

- Guarantee only valid for products bought direct from Abcam or one of our authorized distributors