


Anti-CERK antibody ab155061

[1 References](#) [2 Images](#)

Overview

Product name	Anti-CERK antibody
Description	Rabbit polyclonal to CERK
Host species	Rabbit
Tested applications	Suitable for: WB, IHC-P
Species reactivity	Reacts with: Human Predicted to work with: Mouse, Rat 
Immunogen	Recombinant fragment, corresponding to a region within amino acids 85-335 of Human CERK (Uniprot ID: Q8TCT0).
Positive control	Human breast carcinoma tissue; H1299, HeLa, HepG2 and Raji whole cell lysates.
General notes	<p>The Life Science industry has been in the grips of a reproducibility crisis for a number of years. Abcam is leading the way in addressing this with our range of recombinant monoclonal antibodies and knockout edited cell lines for gold-standard validation. Please check that this product meets your needs before purchasing.</p> <p>If you have any questions, special requirements or concerns, please send us an inquiry and/or contact our Support team ahead of purchase. Recommended alternatives for this product can be found below, along with publications, customer reviews and Q&As</p>

Properties

Form	Liquid
Storage instructions	Shipped at 4°C. Upon delivery aliquot. Store at -20°C or -80°C. Avoid freeze / thaw cycle.
Storage buffer	pH: 7.00 Preservative: 0.01% Thimerosal (merthiolate) Constituents: 1.21% Tris, 0.75% Glycine, 10% Glycerol (glycerin, glycerine)
Purity	Immunogen affinity purified
Clonality	Polyclonal
Isotype	IgG

Applications

The Abpromise guarantee

Our **Abpromise guarantee** covers the use of ab155061 in the following tested applications.

The application notes include recommended starting dilutions; optimal dilutions/concentrations should be determined by the end user.

Application	Abreviews	Notes
WB		1/500 - 1/3000. Predicted molecular weight: 60 kDa.
IHC-P		1/100 - 1/1000.

Target

Function

Catalyzes specifically the phosphorylation of ceramide to form ceramide 1-phosphate. Acts efficiently on natural and analog ceramides (C6, C8, C16 ceramides, and C8-dihydroceramide), to a lesser extent on C2-ceramide and C6-dihydroceramide, but not on other lipids, such as various sphingosines. Binds phosphoinositides.

Tissue specificity

High level expression in heart, brain, skeletal muscle, kidney and liver; moderate in peripheral blood leukocytes and thymus; very low in spleen, small intestine, placenta and lung.

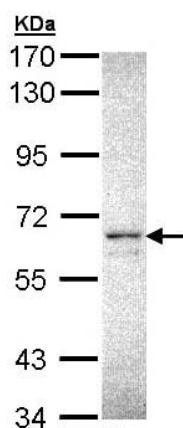
Sequence similarities

Contains 1 DAGKc domain.

Cellular localization

Cytoplasm. Membrane.

Images

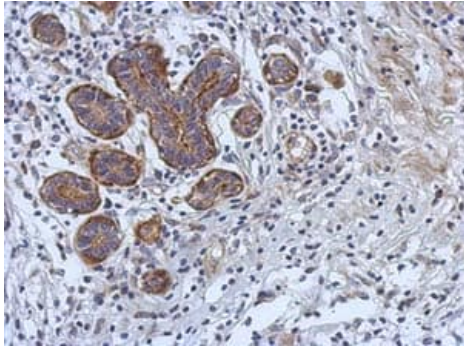


Western blot - Anti-CERK antibody (ab155061)

Anti-CERK antibody (ab155061) at 1/1000 dilution + HepG2 whole cell lysate at 30 µg

Predicted band size: 60 kDa

7.5% SDS-PAGE.



Immunohistochemistry (Formalin/PFA-fixed paraffin-embedded sections) - Anti-CERK antibody (ab155061)

Immunohistochemical analysis of paraffin-embedded Human breast carcinoma tissue labeling CERK with ab155061 at 1/500 dilution.

Please note: All products are "FOR RESEARCH USE ONLY. NOT FOR USE IN DIAGNOSTIC PROCEDURES"

Our Abpromise to you: Quality guaranteed and expert technical support

- Replacement or refund for products not performing as stated on the datasheet
- Valid for 12 months from date of delivery
- Response to your inquiry within 24 hours
- We provide support in Chinese, English, French, German, Japanese and Spanish
- Extensive multi-media technical resources to help you
- We investigate all quality concerns to ensure our products perform to the highest standards

If the product does not perform as described on this datasheet, we will offer a refund or replacement. For full details of the Abpromise, please visit <https://www.abcam.com/abpromise> or contact our technical team.

Terms and conditions

- Guarantee only valid for products bought direct from Abcam or one of our authorized distributors