

Anti-CerS2 antibody ab176709

[2 References](#) [2 Images](#)

Overview

Product name	Anti-CerS2 antibody
Description	Rabbit polyclonal to CerS2
Host species	Rabbit
Tested applications	Suitable for: WB, IP
Species reactivity	Reacts with: Human
Immunogen	Synthetic peptide within Human CerS2 aa 300 to the C-terminus (C terminal). The exact immunogen sequence used to generate this antibody is proprietary information. If additional detail on the immunogen is needed to determine the suitability of the antibody for your needs, please contact our Scientific Support team to discuss your requirements. NP_071358.1 Database link: Q96G23
Positive control	HeLa, Jurkat and 293T whole cell lysates.
General notes	<p>The Life Science industry has been in the grips of a reproducibility crisis for a number of years. Abcam is leading the way in addressing this with our range of recombinant monoclonal antibodies and knockout edited cell lines for gold-standard validation. Please check that this product meets your needs before purchasing.</p> <p>If you have any questions, special requirements or concerns, please send us an inquiry and/or contact our Support team ahead of purchase. Recommended alternatives for this product can be found below, along with publications, customer reviews and Q&As</p>

Properties

Form	Liquid
Storage instructions	Shipped at 4°C. Store at +4°C short term (1-2 weeks). Upon delivery aliquot. Store at -20°C long term. Avoid freeze / thaw cycle.
Storage buffer	pH: 6.8 Preservative: 0.09% Sodium azide Constituents: 99% Tris buffered saline, 0.1% BSA pH: 7 to 8
Purity	Immunogen affinity purified
Clonality	Polyclonal

Isotype

IgG

Applications

The Abpromise guarantee

Our **Abpromise guarantee** covers the use of ab176709 in the following tested applications.

The application notes include recommended starting dilutions; optimal dilutions/concentrations should be determined by the end user.

Application	Abreviews	Notes
WB		1/2000 - 1/10000. Predicted molecular weight: 45 kDa.
IP		Use at 2-10 µg/mg of lysate.

Target

Function

Suppresses the growth of cancer cells. May be involved in sphingolipid synthesis.

Tissue specificity

Expressed in kidney, liver, brain, heart, placenta and lung.

Sequence similarities

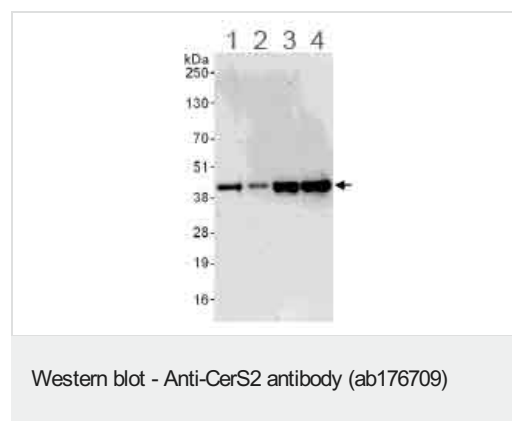
Contains 1 homeobox DNA-binding domain.

Contains 1 TLC (TRAM/LAG1/CLN8) domain.

Cellular localization

Nucleus membrane. Endoplasmic reticulum membrane.

Images



All lanes : Anti-CerS2 antibody (ab176709) at 0.4 µg/ml

Lane 1 : HeLa whole cell lysate at 50 µg

Lane 2 : HeLa whole cell lysate at 15 µg

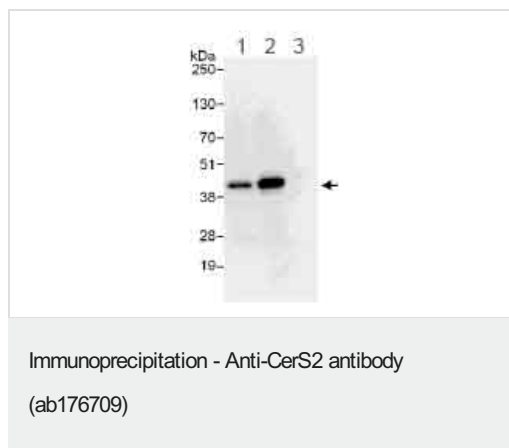
Lane 3 : 293T whole cell lysate at 50 µg

Lane 4 : Jurkat whole cell lysate at 50 µg

Developed using the ECL technique.

Predicted band size: 45 kDa

Exposure time: 3 minutes



CerS2 was immunoprecipitated from 1 mg HeLa whole cell lysate using a rabbit anti-CerS2 antibody which recognizes an upstream epitope (Lane 1), ab176709 at 6 µg/mg lysate (Lane 2) or control IgG (Lane 3) and then 20% of the IP was loaded for western blot and blotted using ab176709 at 1 µg/ml.

Please note: All products are "FOR RESEARCH USE ONLY. NOT FOR USE IN DIAGNOSTIC PROCEDURES"

Our Abpromise to you: Quality guaranteed and expert technical support

- Replacement or refund for products not performing as stated on the datasheet
- Valid for 12 months from date of delivery
- Response to your inquiry within 24 hours
- We provide support in Chinese, English, French, German, Japanese and Spanish
- Extensive multi-media technical resources to help you
- We investigate all quality concerns to ensure our products perform to the highest standards

If the product does not perform as described on this datasheet, we will offer a refund or replacement. For full details of the Abpromise, please visit <https://www.abcam.com/abpromise> or contact our technical team.

Terms and conditions

- Guarantee only valid for products bought direct from Abcam or one of our authorized distributors