


Anti-CERT antibody ab72536

[12 References](#) [2 Images](#)

Overview

Product name	Anti-CERT antibody
Description	Rabbit polyclonal to CERT
Host species	Rabbit
Tested applications	Suitable for: WB, IP
Species reactivity	Reacts with: Human Predicted to work with: Rabbit, Horse, Chicken, Guinea pig, Cow, Dog, Turkey, Pig, Xenopus laevis, Chimpanzee, Zebrafish, Rhesus monkey, Gorilla, Orangutan, Xenopus tropicalis 
Immunogen	Synthetic peptide within Human CERT aa 300-400. The exact immunogen sequence used to generate this antibody is proprietary information. If additional detail on the immunogen is needed to determine the suitability of the antibody for your needs, please contact our Scientific Support team to discuss your requirements. NP_005704.1 Database link: Q9Y5P4-1
General notes	<p>The Life Science industry has been in the grips of a reproducibility crisis for a number of years. Abcam is leading the way in addressing this with our range of recombinant monoclonal antibodies and knockout edited cell lines for gold-standard validation. Please check that this product meets your needs before purchasing.</p> <p>If you have any questions, special requirements or concerns, please send us an inquiry and/or contact our Support team ahead of purchase. Recommended alternatives for this product can be found below, along with publications, customer reviews and Q&As</p>

Properties

Form	Liquid
Storage instructions	Shipped at 4°C. Upon delivery aliquot and store at -20°C. Avoid freeze / thaw cycles.
Storage buffer	pH: 7 Preservative: 0.09% Sodium azide Constituents: 1.815% Tris, 1.764% Sodium citrate, 0.021% PBS
Purity	Immunogen affinity purified
Clonality	Polyclonal
Isotype	IgG

Applications

The Abpromise guarantee

Our **Abpromise guarantee** covers the use of ab72536 in the following tested applications.

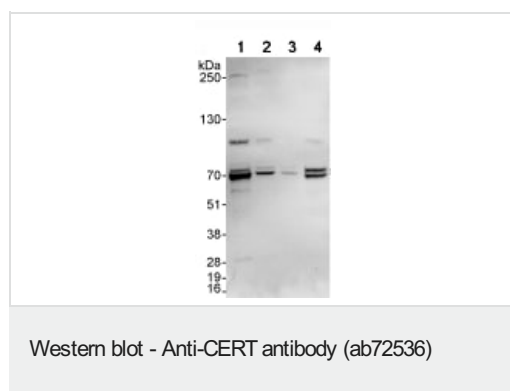
The application notes include recommended starting dilutions; optimal dilutions/concentrations should be determined by the end user.

Application	Abreviews	Notes
WB		1/2500 - 1/10000. Detects a band of approximately 71 kDa (predicted molecular weight: 71 kDa).
IP		Use at 1-4 µg/mg of lysate.

Target

Function	May mediate the intracellular trafficking of ceramide in a non-vesicular manner.
Tissue specificity	Widely expressed.
Sequence similarities	Contains 1 PH domain. Contains 1 START domain.
Domain	The START domain recognizes ceramide and mediates the intermembrane transfer of ceramide. The PH domain targets the Golgi apparatus. The FFAT motif is required for interaction with VAPA and VAPB.
Post-translational modifications	Phosphorylation on Ser-132 decreases the affinity toward phosphatidylinositol 4-phosphate at Golgi membranes and reduces ceramide transfer activity.
Cellular localization	Cytoplasm. Golgi apparatus. Endoplasmic reticulum. Preferentially localized to the Golgi apparatus.

Images



All lanes : Anti-CERT antibody (ab72536) at 0.1 µg/ml

Lane 1 : HeLa whole cell lysate at 50 µg

Lane 2 : HeLa whole cell lysate at 15 µg

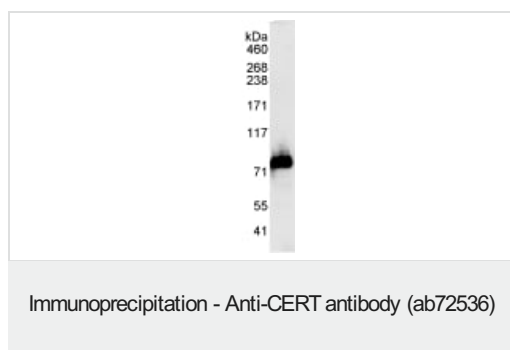
Lane 3 : HeLa whole cell lysate at 5 µg

Lane 4 : 293T whole cell lysate at 50 µg

Predicted band size: 71 kDa

Observed band size: 71 kDa

Additional bands at: 100 kDa, 28 kDa, 60 kDa, 70 kDa (possible isoform). We are unsure as to the identity of these extra bands.



Detection of Human CERT by Immunoprecipitation from Whole cell lysate from HeLa cells (1 mg for IP, 20% of IP loaded), using ab72536 at 3 µg/mg lysate for IP and at 1 µg/ml for subsequent Western blot detection.

Please note: All products are "FOR RESEARCH USE ONLY. NOT FOR USE IN DIAGNOSTIC PROCEDURES"

Our Abpromise to you: Quality guaranteed and expert technical support

- Replacement or refund for products not performing as stated on the datasheet
- Valid for 12 months from date of delivery
- Response to your inquiry within 24 hours
- We provide support in Chinese, English, French, German, Japanese and Spanish
- Extensive multi-media technical resources to help you
- We investigate all quality concerns to ensure our products perform to the highest standards

If the product does not perform as described on this datasheet, we will offer a refund or replacement. For full details of the Abpromise, please visit <https://www.abcam.com/abpromise> or contact our technical team.

Terms and conditions

- Guarantee only valid for products bought direct from Abcam or one of our authorized distributors