


## Product datasheet

### Anti-Ceruloplasmin antibody ab110449

★★★★★ [3 Abreviews](#) [4 References](#) [2 Images](#)

#### Overview

<b>Product name</b>	Anti-Ceruloplasmin antibody
<b>Description</b>	Rabbit polyclonal to Ceruloplasmin
<b>Host species</b>	Rabbit
<b>Tested applications</b>	<b>Suitable for:</b> WB
<b>Species reactivity</b>	<b>Reacts with:</b> Human <b>Predicted to work with:</b> Rat, Pig 
<b>Immunogen</b>	Synthetic peptide. This information is proprietary to Abcam and/or its suppliers.
<b>General notes</b>	<p>The Life Science industry has been in the grips of a reproducibility crisis for a number of years. Abcam is leading the way in addressing this with our range of recombinant monoclonal antibodies and knockout edited cell lines for gold-standard validation. Please check that this product meets your needs before purchasing.</p> <p>If you have any questions, special requirements or concerns, please send us an inquiry and/or contact our Support team ahead of purchase. Recommended alternatives for this product can be found below, along with publications, customer reviews and Q&amp;As</p>

#### Properties

<b>Form</b>	Liquid
<b>Storage instructions</b>	Shipped at 4°C. Store at +4°C short term (1-2 weeks). Upon delivery aliquot. Store at -20°C or -80°C. Avoid freeze / thaw cycle.
<b>Storage buffer</b>	Preservative: 0.02% Sodium azide Constituent: PBS
<b>Purity</b>	Immunogen affinity purified
<b>Clonality</b>	Polyclonal
<b>Isotype</b>	IgG

#### Applications

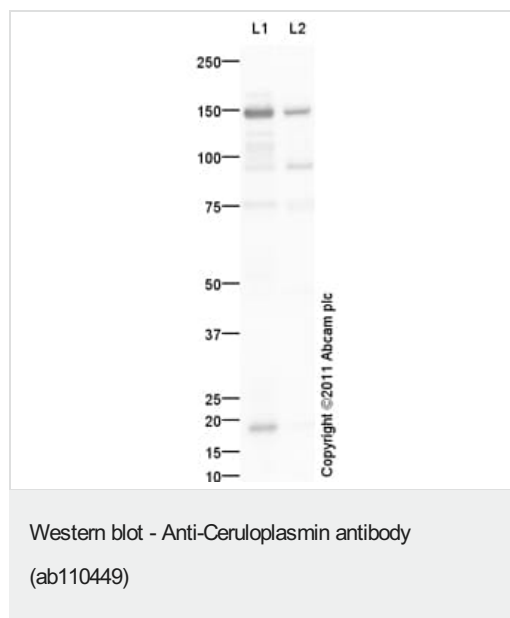
**The Abpromise guarantee** Our **Abpromise guarantee** covers the use of ab110449 in the following tested applications. The application notes include recommended starting dilutions; optimal dilutions/concentrations should be determined by the end user.

Application	Abreviews	Notes
WB	★★★★★ (1)	Use a concentration of 1 µg/ml. Detects a band of approximately 148 kDa (predicted molecular weight: 122 kDa).

## Target

<b>Function</b>	Ceruloplasmin is a blue, copper-binding (6-7 atoms per molecule) glycoprotein. It has ferroxidase activity oxidizing Fe(2+) to Fe(3+) without releasing radical oxygen species. It is involved in iron transport across the cell membrane.
<b>Tissue specificity</b>	Expressed by the liver and secreted in plasma.
<b>Involvement in disease</b>	Defects in CP are the cause of aceruloplasminemia (ACERULOP) [MIM:604290]. It is an autosomal recessive disorder of iron metabolism characterized by iron accumulation in the brain as well as visceral organs. Clinical features consist of the triad of retinal degeneration, diabetes mellitus and neurological disturbances. Note=Ceruloplasmin levels are decreased in Wilson disease, in which copper cannot be incorporated into ceruloplasmin in liver because of defects in the copper-transporting ATPase 2.
<b>Sequence similarities</b>	Belongs to the multicopper oxidase family. Contains 3 F5/8 type A domains. Contains 6 plastocyanin-like domains.
<b>Cellular localization</b>	Secreted.

## Images



**All lanes :** Anti-Ceruloplasmin antibody (ab110449) at 1 µg/ml

**Lane 1 :** Human Plasma Total Protein Lysate

**Lane 2 :** Human liver tissue lysate - total protein ([ab29889](#))

Lysates/proteins at 10 µg per lane.

### Secondary

**All lanes :** Goat Anti-Rabbit IgG H&L (HRP) preadsorbed ([ab97080](#)) at 1/5000 dilution

Developed using the ECL technique.

Performed under reducing conditions.

**Predicted band size:** 122 kDa

**Observed band size:** 148 kDa

**Additional bands at:** 18 kDa, 75 kDa, 95 kDa. We are unsure as to the identity of these extra bands.

**Exposure time:** 1 minute



Western blot - Anti-Ceruloplasmin antibody  
(ab110449)

Anti-Ceruloplasmin antibody (ab110449) at 1 µg/ml + Native  
Human Ceruloplasmin protein ([ab77930](#)) at 0.01 µg

**Secondary**

Goat Anti-Rabbit IgG H&L (HRP) preadsorbed ([ab97080](#)) at  
1/5000 dilution

Developed using the ECL technique.

Performed under reducing conditions.

**Predicted band size:** 122 kDa

**Exposure time:** 30 seconds

**Please note:** All products are "FOR RESEARCH USE ONLY. NOT FOR USE IN DIAGNOSTIC PROCEDURES"

### Our Abpromise to you: Quality guaranteed and expert technical support

---

- Replacement or refund for products not performing as stated on the datasheet
- Valid for 12 months from date of delivery
- Response to your inquiry within 24 hours
- We provide support in Chinese, English, French, German, Japanese and Spanish
- Extensive multi-media technical resources to help you
- We investigate all quality concerns to ensure our products perform to the highest standards

If the product does not perform as described on this datasheet, we will offer a refund or replacement. For full details of the Abpromise, please visit <https://www.abcam.com/abpromise> or contact our technical team.

### Terms and conditions

---

- Guarantee only valid for products bought direct from Abcam or one of our authorized distributors