

Anti-Ceruloplasmin antibody [EPSISR6-12] - BSA and Azide free ab232055

Recombinant RabMAb

2 Images

Overview

Product name	Anti-Ceruloplasmin antibody [EPSISR6-12] - BSA and Azide free
Description	Rabbit monoclonal [EPSISR6-12] to Ceruloplasmin - BSA and Azide free
Host species	Rabbit
Tested applications	Suitable for: WB
Species reactivity	Reacts with: Rat, Human
Immunogen	Synthetic peptide. This information is proprietary to Abcam and/or its suppliers.
Positive control	WB: Human plasma; Human fetal kidney lysate; Rat liver lysate.
General notes	<p>ab232055 is the carrier-free version of ab131220.</p> <p>Our carrier-free antibodies are typically supplied in a PBS-only formulation, purified and free of BSA, sodium azide and glycerol. The carrier-free buffer and high concentration allow for increased conjugation efficiency.</p> <p>This conjugation-ready format is designed for use with fluorochromes, metal isotopes, oligonucleotides, and enzymes, which makes them ideal for antibody labelling, functional and cell-based assays, flow-based assays (e.g. mass cytometry) and Multiplex Imaging applications.</p> <p>Use our conjugation kits for antibody conjugates that are ready-to-use in as little as 20 minutes with <1 minute hands-on-time and 100% antibody recovery: available for fluorescent dyes, HRP, biotin and gold.</p> <p>This product is compatible with the Maxpar[®] Antibody Labeling Kit from Fluidigm, without the need for antibody preparation. Maxpar[®] is a trademark of Fluidigm Canada Inc.</p> <p>This product is a recombinant monoclonal antibody, which offers several advantages including:</p> <ul style="list-style-type: none"> - High batch-to-batch consistency and reproducibility - Improved sensitivity and specificity - Long-term security of supply - Animal-free production <p>For more information see here.</p> <p>Our RabMAb[®] technology is a patented hybridoma-based technology for making rabbit monoclonal antibodies. For details on our patents, please refer to RabMAb[®] patents.</p> <p>Mouse: We have preliminary internal testing data to indicate this antibody may not react with this</p>

species. Please contact us for more information.

Properties

Form	Liquid
Storage instructions	Shipped at 4°C. Store at +4°C. Do Not Freeze.
Storage buffer	pH: 7.2 Constituent: PBS
Carrier free	Yes
Purity	Protein A purified
Clonality	Monoclonal
Clone number	EPSISR6-12
Isotype	IgG

Applications

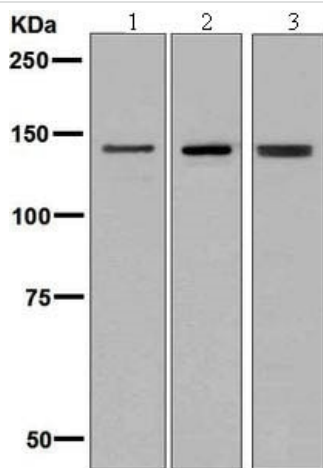
The Abpromise guarantee Our **Abpromise guarantee** covers the use of ab232055 in the following tested applications. The application notes include recommended starting dilutions; optimal dilutions/concentrations should be determined by the end user.

Application	Abreviews	Notes
WB		Use at an assay dependent concentration. Detects a band of approximately 132 kDa (predicted molecular weight: 122 kDa).

Target

Function	Ceruloplasmin is a blue, copper-binding (6-7 atoms per molecule) glycoprotein. It has ferroxidase activity oxidizing Fe(2+) to Fe(3+) without releasing radical oxygen species. It is involved in iron transport across the cell membrane.
Tissue specificity	Expressed by the liver and secreted in plasma.
Involvement in disease	Defects in CP are the cause of aceruloplasminemia (ACERULOP) [MIM:604290]. It is an autosomal recessive disorder of iron metabolism characterized by iron accumulation in the brain as well as visceral organs. Clinical features consist of the triad of retinal degeneration, diabetes mellitus and neurological disturbances. Note=Ceruloplasmin levels are decreased in Wilson disease, in which copper cannot be incorporated into ceruloplasmin in liver because of defects in the copper-transporting ATPase 2.
Sequence similarities	Belongs to the multicopper oxidase family. Contains 3 F5/8 type A domains. Contains 6 plastocyanin-like domains.
Cellular localization	Secreted.

Images



Western blot - Anti-Ceruloplasmin antibody
[EPSISR6-12] - BSA and Azide free (ab232055)

All lanes : Anti-Ceruloplasmin antibody [EPSISR6-12] (**ab131220**)
at 1/1000 dilution

Lane 1 : Human plasma

Lane 2 : Human fetal kidney lysate

Lane 3 : Rat liver lysate

Lysates/proteins at 10 µg per lane.

Secondary

All lanes : Goat anti-rabbit HRP at 1/2000 dilution

Predicted band size: 122 kDa

This data was developed using the same antibody clone in a different buffer formulation containing PBS, BSA, glycerol, and sodium azide (**ab131220**).

Why choose a recombinant antibody?



Research with confidence
Consistent and reproducible results



Long-term and scalable supply
Recombinant technology



Success from the first experiment
Confirmed specificity



Ethical standards compliant
Animal-free production

Anti-Ceruloplasmin antibody [EPSISR6-12] - BSA
and Azide free (ab232055)

Please note: All products are "FOR RESEARCH USE ONLY. NOT FOR USE IN DIAGNOSTIC PROCEDURES"

Our Abpromise to you: Quality guaranteed and expert technical support

- Replacement or refund for products not performing as stated on the datasheet
- Valid for 12 months from date of delivery
- Response to your inquiry within 24 hours
- We provide support in Chinese, English, French, German, Japanese and Spanish

- Extensive multi-media technical resources to help you
- We investigate all quality concerns to ensure our products perform to the highest standards

If the product does not perform as described on this datasheet, we will offer a refund or replacement. For full details of the Abpromise, please visit <https://www.abcam.com/abpromise> or contact our technical team.

Terms and conditions

- Guarantee only valid for products bought direct from Abcam or one of our authorized distributors