

## Product datasheet

### Anti-CETP antibody [EPR13] ab157183

Recombinant RabMAb

[2 References](#) [3 Images](#)

#### Overview

<b>Product name</b>	Anti-CETP antibody [EPR13]
<b>Description</b>	Rabbit monoclonal [EPR13] to CETP
<b>Host species</b>	Rabbit
<b>Tested applications</b>	<b>Suitable for:</b> WB, IP <b>Unsuitable for:</b> ICC/IF or IHC-P
<b>Species reactivity</b>	<b>Reacts with:</b> Human
<b>Immunogen</b>	Synthetic peptide. This information is proprietary to Abcam and/or its suppliers.
<b>Positive control</b>	Recombinant Human CETP protein ( <a href="#">ab114408</a> ) can be used as a positive control in WB. Human plasma lysate.
<b>General notes</b>	<p>This product is a recombinant monoclonal antibody, which offers several advantages including:</p> <ul style="list-style-type: none"> <li>- High batch-to-batch consistency and reproducibility</li> <li>- Improved sensitivity and specificity</li> <li>- Long-term security of supply</li> <li>- Animal-free production</li> </ul> <p>For more information <a href="#">see here</a>.</p> <p>Our RabMAb<sup>®</sup> technology is a patented hybridoma-based technology for making rabbit monoclonal antibodies. For details on our patents, please refer to <a href="#">RabMAb<sup>®</sup> patents</a>.</p> <p>Mouse, Rat: We have preliminary internal testing data to indicate this antibody may not react with these species. Please contact us for more information.</p>

#### Properties

<b>Form</b>	Liquid
<b>Storage instructions</b>	Shipped at 4°C. Store at -20°C.
<b>Storage buffer</b>	pH: 7.2 Preservative: 0.01% Sodium azide Constituents: 59% PBS, 40% Glycerol (glycerin, glycerine), 0.5% BSA
<b>Purity</b>	Protein A purified
<b>Clonality</b>	Monoclonal

Clone number                      EPR13  
Isotype                                IgG

## Applications

**The Abpromise guarantee**                      Our **Abpromise guarantee** covers the use of ab157183 in the following tested applications.  
The application notes include recommended starting dilutions; optimal dilutions/concentrations should be determined by the end user.

Application	Abreviews	Notes
WB		1/1000 - 1/10000. Predicted molecular weight: 55 kDa.
IP		1/10 - 1/100.

**Application notes**                                Is unsuitable for ICC/IF or IHC-P.

## Target

**Function**    Involved in the transfer of insoluble cholesteryl esters in the reverse transport of cholesterol.

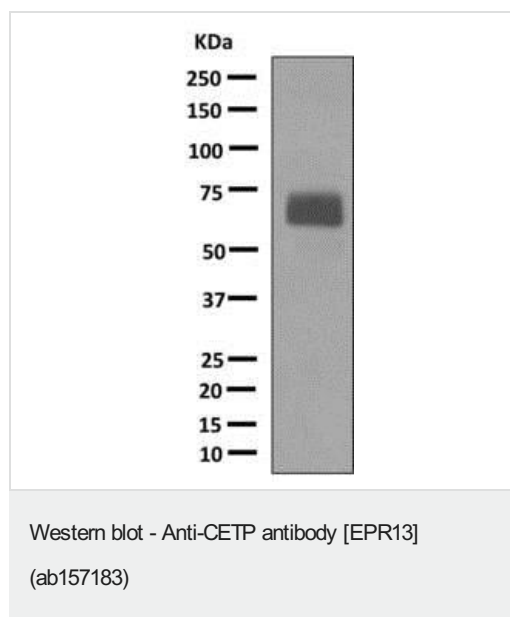
**Tissue specificity**                                Expressed by the liver and secreted in plasma.

**Involvement in disease**                        Defects in CETP are a cause of hyperalphalipoproteinemia (HYPALIP) [MIM:143470]. Affected individuals show high levels of alpha-lipoprotein (high density lipoprotein/HDL).  
Defects in CETP are the cause of cholesteryl ester transfer protein deficiency (CETP deficiency) [MIM:607322]. This is an autosomal dominant condition associated with increased HDL cholesterol levels.

**Sequence similarities**                            Belongs to the BPI/LBP/Plunc superfamily. BPI/LBP family.

**Cellular localization**                            Secreted > extracellular space.

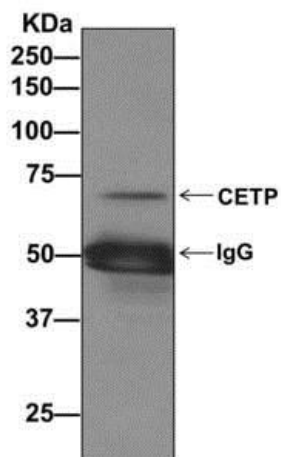
## Images



Anti-CETP antibody [EPR13] (ab157183) at 1/1000 dilution +  
Human plasma lysate at 10 µg

**Secondary**  
Goat anti-rabbit HRP at 1/2000 dilution

**Predicted band size:** 55 kDa



Detection of CETP by Western Blot of Immunoprecipitate. Human plasma lysates immunoprecipitated using ab157183 at 1/10 dilution.

Anti-CETP antibody [EPR13] (ab157183) at 1/1000 dilution + immunoprecipitation pellets from Human plasma at 10 µg

Immunoprecipitation - Anti-CETP antibody [EPR13]  
(ab157183)

Why choose a  
recombinant antibody?



Research with  
confidence  
Consistent and  
reproducible results



Long-term and  
scalable supply  
Recombinant  
technology



Success from the  
first experiment  
Confirmed  
specificity



Ethical standards  
compliant  
Animal-free  
production

Anti-CETP antibody [EPR13] (ab157183)

**Please note:** All products are "FOR RESEARCH USE ONLY. NOT FOR USE IN DIAGNOSTIC PROCEDURES"

### Our Abpromise to you: Quality guaranteed and expert technical support

- Replacement or refund for products not performing as stated on the datasheet
- Valid for 12 months from date of delivery
- Response to your inquiry within 24 hours
- We provide support in Chinese, English, French, German, Japanese and Spanish
- Extensive multi-media technical resources to help you
- We investigate all quality concerns to ensure our products perform to the highest standards

If the product does not perform as described on this datasheet, we will offer a refund or replacement. For full details of the Abpromise, please visit <https://www.abcam.com/abpromise> or contact our technical team.

## Terms and conditions

---

- Guarantee only valid for products bought direct from Abcam or one of our authorized distributors