

Product datasheet

CF405M Anti-CD105 antibody [2H6F11], prediluted ab123634

[1 Image](#)

Overview

Product name	CF405M Anti-CD105 antibody [2H6F11], prediluted
Description	CF405M Mouse monoclonal [2H6F11] to CD105, prediluted
Host species	Mouse
Conjugation	CF405M. Ex: 408nm, Em: 452nm
Tested applications	Suitable for: Flow Cyt
Species reactivity	Reacts with: Human
Immunogen	Recombinant full length protein corresponding to CD105. Human Endoglin fusion protein.
Positive control	Nalm-6 cell line
General notes	<p>CD105 is a component of the TGF-B receptor system and can bind TGF-B1 and TGF-B3 with high affinity but does not bind TGF-B2. CD105 is expressed by vascular endothelial cells and syncytiotrophoblasts of placenta, Pre-B cells in fetal marrow, erythroid precursors in fetal and adult bone marrow and is weakly expressed by stromal fibroblasts. U937 cells and monocytes and tissue macrophages also expresses weakly CD105. Expression of CD105 is increased on activated endothelium in tissues undergoing angiogenesis, such as in tumours, or in cases of wound healing or dermal inflammation.</p> <p>CF405M (Abs/Em Max: 408/450nm). Direct replacement for Pacific Blue dye®, BD Horizon™ V450.</p> <p>The Life Science industry has been in the grips of a reproducibility crisis for a number of years. Abcam is leading the way in addressing this with our range of recombinant monoclonal antibodies and knockout edited cell lines for gold-standard validation. Please check that this product meets your needs before purchasing.</p> <p>If you have any questions, special requirements or concerns, please send us an inquiry and/or contact our Support team ahead of purchase. Recommended alternatives for this product can be found below, along with publications, customer reviews and Q&As</p>

Properties

Form	Liquid
-------------	--------

Storage instructions	Shipped at 4°C. Store at +4°C.
Storage buffer	pH: 7.20 Preservative: 0.09% Sodium azide
Purity	Immunogen affinity purified
Primary antibody notes	CD105 is a component of the TGF-B receptor system and can bind TGF-B1 and TGF-B3 with high affinity but does not bind TGF-B2. CD105 is expressed by vascular endothelial cells and syncytiotrophoblasts of placenta, Pre-B cells in fetal marrow, erythroid precursors in fetal and adult bone marrow and is weakly expressed by stromal fibroblasts. U937 cells and monocytes and tissue macrophages also expresses weakly CD105. Expression of CD105 is increased on activated endothelium in tissues undergoing angiogenesis, such as in tumours, or in cases of wound healing or dermal inflammation.
Clonality	Monoclonal
Clone number	2H6F11
Isotype	IgG1

Applications

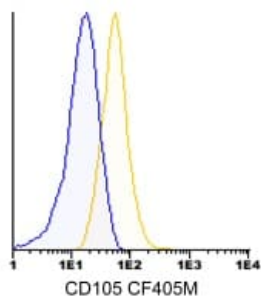
The Abpromise guarantee Our **Abpromise guarantee** covers the use of ab123634 in the following tested applications. The application notes include recommended starting dilutions; optimal dilutions/concentrations should be determined by the end user.

Application	Abreviews	Notes
Flow Cyt		Use 5µl for 10 ⁶ cells. ab126026 - Mouse monoclonal IgG1, is suitable for use as an isotype control with this antibody.

Target

Function	Major glycoprotein of vascular endothelium. May play a critical role in the binding of endothelial cells to integrins and/or other RGD receptors.
Tissue specificity	Endoglin is restricted to endothelial cells in all tissues except bone marrow.
Involvement in disease	Defects in ENG are the cause of hereditary hemorrhagic telangiectasia type 1 (HHT1) [MIM:187300, 108010]; also known as Osler-Rendu-Weber syndrome 1 (ORW1). HHT1 is an autosomal dominant multisystemic vascular dysplasia, characterized by recurrent epistaxis, muco-cutaneous telangiectases, gastro-intestinal hemorrhage, and pulmonary (PAVM), cerebral (CAVM) and hepatic arteriovenous malformations; all secondary manifestations of the underlying vascular dysplasia. Although the first symptom of HHT1 in children is generally nose bleed, there is an important clinical heterogeneity.
Cellular localization	Membrane.

Images



Flow Cytometry - CF405M Anti-CD105 antibody
[2H6F11], prediluted (ab123634)

Staining of Nalm-6 cell line with ab123634 at $5 \mu\text{l}/10^6$ cells and isotype control IgG1 CFBlue. Total cells were used for analysis.

Please note: All products are "FOR RESEARCH USE ONLY. NOT FOR USE IN DIAGNOSTIC PROCEDURES"

Our Abpromise to you: Quality guaranteed and expert technical support

- Replacement or refund for products not performing as stated on the datasheet
- Valid for 12 months from date of delivery
- Response to your inquiry within 24 hours
- We provide support in Chinese, English, French, German, Japanese and Spanish
- Extensive multi-media technical resources to help you
- We investigate all quality concerns to ensure our products perform to the highest standards

If the product does not perform as described on this datasheet, we will offer a refund or replacement. For full details of the Abpromise, please visit <https://www.abcam.com/abpromise> or contact our technical team.

Terms and conditions

- Guarantee only valid for products bought direct from Abcam or one of our authorized distributors