

Product datasheet

Anti-cGMP antibody [EPR10355] α b169753

Recombinant RabMAb

3 Images

Overview

Product name	Anti-cGMP antibody [EPR10355]
Description	Rabbit monoclonal [EPR10355] to cGMP
Host species	Rabbit
Tested applications	Suitable for: Competitive ELISA Unsuitable for: Flow Cyt, ICC/IF, IHC-P, IP or WB
Species reactivity	Reacts with: Species independent
Immunogen	Chemical/ Small Molecule corresponding to cGMP conjugated to keyhole limpet haemocyanin.
General notes	<p>The product is specific for cGMP and as tested it does not cross-react with cAMP, AMP, ADP, ATP, cGMP, GMP, GDP, GTP and cCMP.</p> <p>This product is a recombinant monoclonal antibody, which offers several advantages including:</p> <ul style="list-style-type: none">- High batch-to-batch consistency and reproducibility- Improved sensitivity and specificity- Long-term security of supply- Animal-free production <p>For more information see here.</p> <p>Our RabMAb[®] technology is a patented hybridoma-based technology for making rabbit monoclonal antibodies. For details on our patents, please refer to RabMAb[®] patents.</p>

Properties

Form	Liquid
Storage instructions	Shipped at 4°C. Store at +4°C short term (1-2 weeks). Upon delivery aliquot. Store at -20°C long term.
Storage buffer	pH: 7.2 Preservative: 0.01% Sodium azide Constituents: 9% PBS, 40% Glycerol (glycerin, glycerine), 0.05% BSA, 50% Tissue culture supernatant
Purity	Tissue culture supernatant
Clonality	Monoclonal
Clone number	EPR10355

Isotype

IgG

Applications

The Abpromise guarantee

Our **Abpromise guarantee** covers the use of ab169753 in the following tested applications.

The application notes include recommended starting dilutions; optimal dilutions/concentrations should be determined by the end user.

Application	Abreviews	Notes
Competitive ELISA		Use a concentration of 0.1 - 4 µg/ml.

Application notes

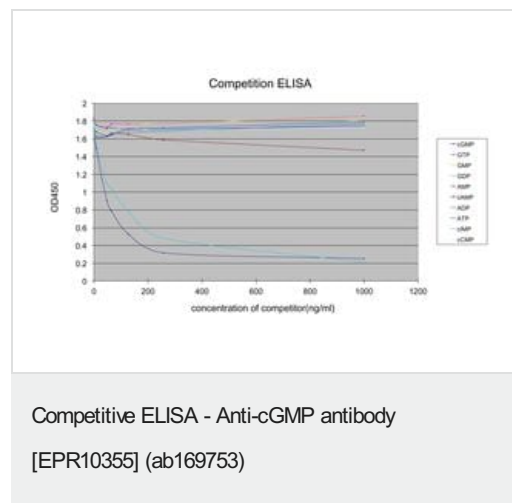
Is unsuitable for Flow Cyt, ICC/IF, IHC-P, IP or WB.

Target

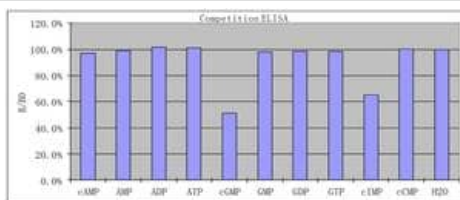
Relevance

Cyclic guanosine monophosphate (cGMP) serves as a second messenger in a manner similar to that observed with cAMP. Peptide hormones, such as the natriuretic factors, activate receptors that are associated with membrane-bound guanylate cyclase (GC). Receptor activation of GC leads to the conversion of GTP to cGMP. Nitric oxide (NO) also stimulates cGMP production by activating soluble GC, perhaps by binding to the heme moiety of the enzyme. Similar to cAMP, cGMP mediates most of its intracellular effects through the activation of specific cGMP dependent protein kinases (PKG).

Images



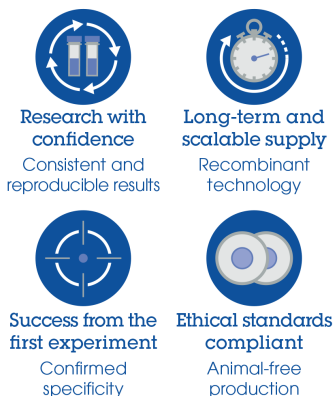
2 µg/ml of Goat anti-rabbit IgG (50 µl/well) was coated into 96-wells. After washing with 0.1 % Tween-20, 0.1 µg/ml of ab169753 (50 µl/well) was added and incubated for 1 hour. After washing, 0, 8, 48, 64, 96, 128, 256 and 1000 ng/ml of cAMP, AMP, ADP, ATP, cGMP, GMP, GDP, GTP, cIMP and cCMP (25 µl/well) were added along with 25 µl of the 1/50 diluted HRP conjugated cGMP. After washing, TMB was used to develop the color.



Competitive ELISA - Anti-cGMP antibody
[EPR10355] (ab169753)

2µg/ml of goat-anti-rabbit IgG (50µl/well) was coated into 96-wells. After washing with 0.1% Tween-20, 0.2µg/ml of ab169753 (50 µl / well) was added and incubated for 1hr. Then 62.5ng/ml of cAMP, AMP, ADP, ATP, cGMP, GMP, GDP, GTP, cIMP, cCMP and H₂O (25 µl / well each) were added, respectively. Finally 25 µl of 1/50 diluted HRP conjugated cGMP was added in each well. TMB was used to develop the color.

Why choose a recombinant antibody?



Anti-cGMP antibody [EPR10355] (ab169753)

Please note: All products are "FOR RESEARCH USE ONLY. NOT FOR USE IN DIAGNOSTIC PROCEDURES"

Our Abpromise to you: Quality guaranteed and expert technical support

- Replacement or refund for products not performing as stated on the datasheet
- Valid for 12 months from date of delivery
- Response to your inquiry within 24 hours
- We provide support in Chinese, English, French, German, Japanese and Spanish
- Extensive multi-media technical resources to help you
- We investigate all quality concerns to ensure our products perform to the highest standards

If the product does not perform as described on this datasheet, we will offer a refund or replacement. For full details of the Abpromise, please visit <https://www.abcam.com/abpromise> or contact our technical team.

Terms and conditions

- Guarantee only valid for products bought direct from Abcam or one of our authorized distributors