



Product datasheet

Anti-CHD2 antibody ab167377

2 Images

Overview

Product name	Anti-CHD2 antibody
Description	Mouse polyclonal to CHD2
Host species	Mouse
Tested applications	Suitable for: WB, ICC/IF
Species reactivity	Reacts with: Human
Immunogen	Recombinant full length protein, corresponding to amino acids 1-501 of Human CHD2 isoform 3 (AAH07347.1)  Run BLAST with ExPASy  Run BLAST with NCBI
Positive control	CHD2 transfected 293T cell lysate, HeLa cell.
General notes	<p>The Life Science industry has been in the grips of a reproducibility crisis for a number of years. Abcam is leading the way in addressing this with our range of recombinant monoclonal antibodies and knockout edited cell lines for gold-standard validation. Please check that this product meets your needs before purchasing.</p> <p>If you have any questions, special requirements or concerns, please send us an inquiry and/or contact our Support team ahead of purchase. Recommended alternatives for this product can be found below, along with publications, customer reviews and Q&As</p>

Properties

Form	Liquid
Storage instructions	Shipped at 4°C. Store at +4°C short term (1-2 weeks). Upon delivery aliquot. Store at -20°C long term.
Storage buffer	pH: 7.4 Constituent: 100% PBS
Purity	Protein A purified
Clonality	Polyclonal
Isotype	IgG

Applications

The Abpromise guarantee

Our **Abpromise guarantee** covers the use of ab167377 in the following tested applications.

The application notes include recommended starting dilutions; optimal dilutions/concentrations should be determined by the end user.

Application	Abreviews	Notes
WB		Use a concentration of 1 µg/ml. Predicted molecular weight: 57 kDa.
ICC/IF		Use a concentration of 10 µg/ml.

Target

Function

Sequence-selective DNA-binding protein.

Sequence similarities

Belongs to the SNF2/RAD54 helicase family.

Contains 2 chromo domains.

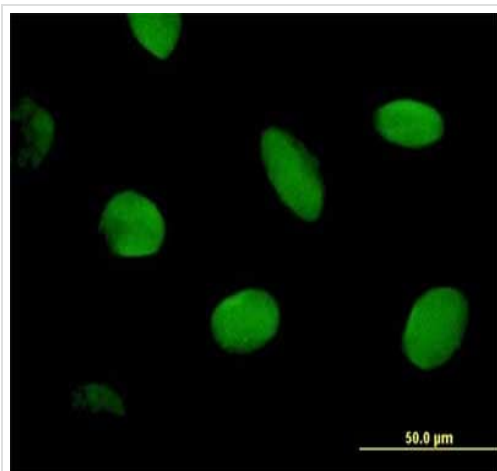
Contains 1 helicase ATP-binding domain.

Contains 1 helicase C-terminal domain.

Cellular localization

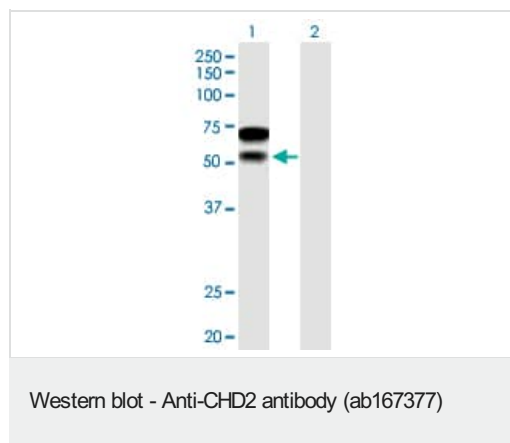
Nucleus.

Images



Immunofluorescence analysis of HeLa cells labeling CHD2 with ab167377 at 10 ug/ml

Immunocytochemistry/ Immunofluorescence - Anti-CHD2 antibody (ab167377)



All lanes : Anti-CHD2 antibody (ab167377) at 1 µg/ml

Lane 1 : CHD2 transfected 293T cell lysate

Lane 2 : Non-transfected 293T cell lysate

Lysates/proteins at 15 µl per lane.

Secondary

All lanes : Goat Anti-Mouse IgG (H&L)-HRP at 1/2500 dilution

Developed using the ECL technique.

Predicted band size: 57 kDa

Please note: All products are "FOR RESEARCH USE ONLY. NOT FOR USE IN DIAGNOSTIC PROCEDURES"

Our Abpromise to you: Quality guaranteed and expert technical support

- Replacement or refund for products not performing as stated on the datasheet
- Valid for 12 months from date of delivery
- Response to your inquiry within 24 hours
- We provide support in Chinese, English, French, German, Japanese and Spanish
- Extensive multi-media technical resources to help you
- We investigate all quality concerns to ensure our products perform to the highest standards

If the product does not perform as described on this datasheet, we will offer a refund or replacement. For full details of the Abpromise, please visit <https://www.abcam.com/abpromise> or contact our technical team.

Terms and conditions

- Guarantee only valid for products bought direct from Abcam or one of our authorized distributors