


Anti-CHD6 antibody ab114095

[2 References](#) [2 Images](#)

Overview

Product name	Anti-CHD6 antibody
Description	Rabbit polyclonal to CHD6
Host species	Rabbit
Tested applications	Suitable for: WB, IP
Species reactivity	Reacts with: Human Predicted to work with: Chimpanzee, Gorilla, Orangutan 
Immunogen	Synthetic peptide, corresponding to a region between amino acids 2665- 2715 of Human CHD6 (NP_115597.3).
Positive control	Whole cell lysate from Hela cells.
General notes	<p>The Life Science industry has been in the grips of a reproducibility crisis for a number of years. Abcam is leading the way in addressing this with our range of recombinant monoclonal antibodies and knockout edited cell lines for gold-standard validation. Please check that this product meets your needs before purchasing.</p> <p>If you have any questions, special requirements or concerns, please send us an inquiry and/or contact our Support team ahead of purchase. Recommended alternatives for this product can be found below, along with publications, customer reviews and Q&As</p>

Properties

Form	Liquid
Storage instructions	Shipped at 4°C. Upon delivery aliquot and store at -20°C. Avoid freeze / thaw cycles.
Storage buffer	<p>pH: 7</p> <p>Preservative: 0.09% Sodium azide</p> <p>Constituent: 99% Tris citrate/phosphate</p> <p>pH: 7 to 8</p>
Purity	Immunogen affinity purified
Purification notes	ab114095 was affinity purified using an epitope specific to CHD6 immobilized on solid support.
Clonality	Polyclonal
Isotype	IgG

Applications

The Abpromise guarantee

Our **Abpromise guarantee** covers the use of ab114095 in the following tested applications.

The application notes include recommended starting dilutions; optimal dilutions/concentrations should be determined by the end user.

Application	Abreviews	Notes
WB		1/2000 - 1/10000. Predicted molecular weight: 305 kDa.
IP		Use at 2-5 µg/mg of lysate.

Target

Function

Probable transcription regulator.

Tissue specificity

Ubiquitous.

Sequence similarities

Belongs to the SNF2/RAD54 helicase family.

Contains 2 chromo domains.

Contains 1 helicase ATP-binding domain.

Contains 1 helicase C-terminal domain.

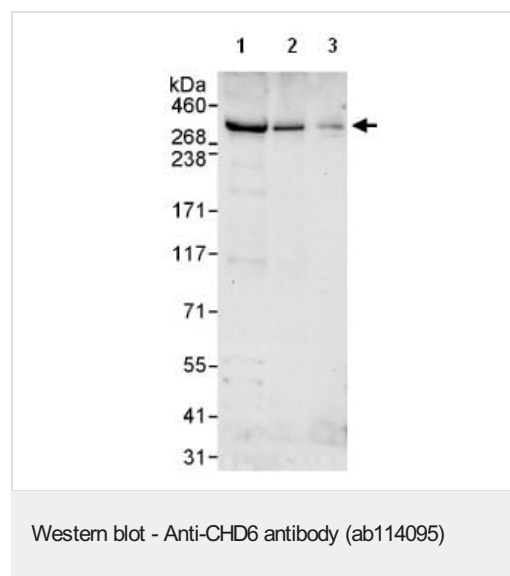
Post-translational modifications

Phosphorylated upon DNA damage, probably by ATM or ATR.

Cellular localization

Nucleus.

Images



All lanes : Anti-CHD6 antibody (ab114095) at 0.1 µg/ml

Lane 1 : Whole cell lysate from HeLa cells at 50 µg

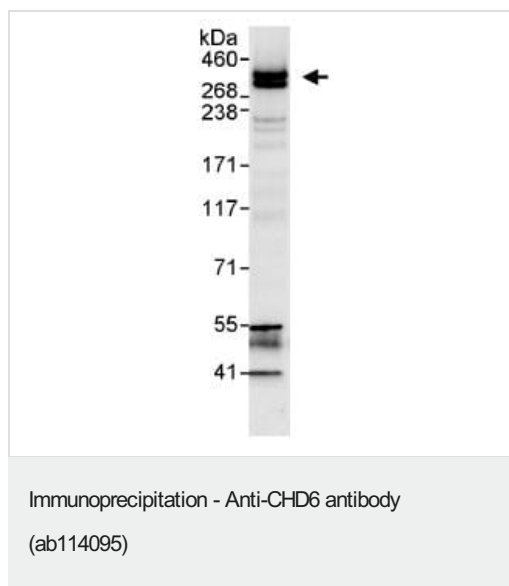
Lane 2 : Whole cell lysate from HeLa cells at 15 µg

Lane 3 : Whole cell lysate from HeLa cells at 5 µg

Developed using the ECL technique.

Predicted band size: 305 kDa

Exposure time: 30 seconds



ab114095, at 1 μ g/ml, staining CHD6 in HeLa whole cell lysate immunoprecipitated using ab114095 at 3 μ g/mg lysate (1 mg for IP; 20% of IP loaded/lane). Detection: Chemiluminescence with an exposure time of 10 seconds.

Please note: All products are "FOR RESEARCH USE ONLY. NOT FOR USE IN DIAGNOSTIC PROCEDURES"

Our Abpromise to you: Quality guaranteed and expert technical support

- Replacement or refund for products not performing as stated on the datasheet
- Valid for 12 months from date of delivery
- Response to your inquiry within 24 hours
- We provide support in Chinese, English, French, German, Japanese and Spanish
- Extensive multi-media technical resources to help you
- We investigate all quality concerns to ensure our products perform to the highest standards

If the product does not perform as described on this datasheet, we will offer a refund or replacement. For full details of the Abpromise, please visit <https://www.abcam.com/abpromise> or contact our technical team.

Terms and conditions

- Guarantee only valid for products bought direct from Abcam or one of our authorized distributors