


Product datasheet

Anti-CHD8 antibody ab84527

★★★★★ [1 Abreviews](#) [7 References](#) [2 Images](#)

Overview

Product name	Anti-CHD8 antibody
Description	Rabbit polyclonal to CHD8
Host species	Rabbit
Tested applications	Suitable for: IHC-P, WB, IP
Species reactivity	Reacts with: Mouse, Human Predicted to work with: Rabbit, Horse, Guinea pig, Cow, Pig, Chimpanzee, Monkey, Rhesus monkey, Gorilla, Orangutan, Elephant 
Immunogen	Synthetic peptide within Human CHD8 aa 2250-2350. The exact immunogen sequence used to generate this antibody is proprietary information. If additional detail on the immunogen is needed to determine the suitability of the antibody for your needs, please contact our Scientific Support team to discuss your requirements. NP_065971.2 (GeneID 57680). Database link: Q9HCK8
Positive control	IHC-P: Human breast carcinoma and prostate carcinoma tissue.
General notes	Concentration is optimized for IHC and not determined The Life Science industry has been in the grips of a reproducibility crisis for a number of years. Abcam is leading the way in addressing this with our range of recombinant monoclonal antibodies and knockout edited cell lines for gold-standard validation. Please check that this product meets your needs before purchasing. If you have any questions, special requirements or concerns, please send us an inquiry and/or contact our Support team ahead of purchase. Recommended alternatives for this product can be found below, along with publications, customer reviews and Q&As

Properties

Form	Liquid
Storage instructions	Shipped at 4°C. Upon delivery aliquot and store at -20°C. Avoid freeze / thaw cycles.
Storage buffer	pH: 6.8 Preservative: 0.09% Sodium azide Constituents: 0.1% BSA, Tris buffered saline
Purity	Immunogen affinity purified
Clonality	Polyclonal

Isotype

IgG

Applications

The Abpromise guarantee

Our **Abpromise guarantee** covers the use of ab84527 in the following tested applications.

The application notes include recommended starting dilutions; optimal dilutions/concentrations should be determined by the end user.

Application	Abreviews	Notes
IHC-P		1/100 - 1/500. Perform heat mediated antigen retrieval with citrate buffer pH 6 before commencing with IHC staining protocol.
WB		Use at an assay dependent concentration. Predicted molecular weight: 291 kDa. PubMed: 24705355
IP		Use at an assay dependent concentration. PubMed: 23285124

Target

Function

DNA helicase that acts as a chromatin remodeling factor and regulates transcription. Acts as a transcription repressor by remodeling chromatin structure and recruiting histone H1 to target genes. Suppresses p53/TP53-mediated apoptosis by recruiting histone H1 and preventing p53/TP53 transactivation activity. Acts as a negative regulator of Wnt signaling pathway by regulating beta-catenin (CTNNB1) activity. Negatively regulates CTNNB1-targeted gene expression by being recruited specifically to the promoter regions of several CTNNB1 responsive genes. Involved in both enhancer blocking and epigenetic remodeling at chromatin boundary via its interaction with CTCF. Acts as a suppressor of STAT3 activity by suppressing the LIF-induced STAT3 transcriptional activity. Also acts as a transcription activator via its interaction with ZNF143 by participating to efficient U6 RNA polymerase III transcription.

Sequence similarities

Belongs to the SNF2/RAD54 helicase family. CHD8 subfamily.
Contains 2 chromo domains.
Contains 1 helicase ATP-binding domain.
Contains 1 helicase C-terminal domain.

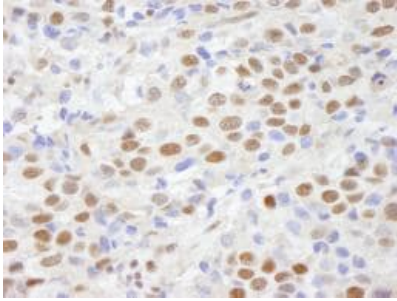
Post-translational modifications

Sumoylated.

Cellular localization

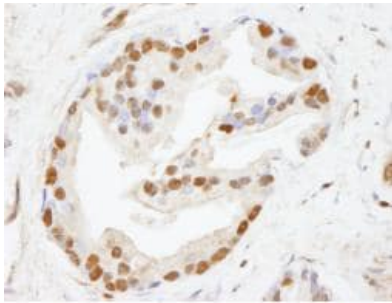
Nucleus. Localizes to the promoter regions of several CTNNB1-responsive genes. Also present at known CTCF target sites.

Images



Immunohistochemistry (Formalin/PFA-fixed paraffin-embedded sections) - Anti-CHD8 antibody (ab84527)

ab84527, at 1/100 dilution, staining CHD8 in formalin-fixed, paraffin-embedded human breast carcinoma by Immunohistochemistry, using DAB staining.



Immunohistochemistry (Formalin/PFA-fixed paraffin-embedded sections) - Anti-CHD8 antibody (ab84527)

ab84527, at 1/100 dilution, staining CHD8 in formalin-fixed, paraffin-embedded human prostate carcinoma by Immunohistochemistry using DAB staining.

Please note: All products are "FOR RESEARCH USE ONLY. NOT FOR USE IN DIAGNOSTIC PROCEDURES"

Our Abpromise to you: Quality guaranteed and expert technical support

- Replacement or refund for products not performing as stated on the datasheet
- Valid for 12 months from date of delivery
- Response to your inquiry within 24 hours
- We provide support in Chinese, English, French, German, Japanese and Spanish
- Extensive multi-media technical resources to help you
- We investigate all quality concerns to ensure our products perform to the highest standards

If the product does not perform as described on this datasheet, we will offer a refund or replacement. For full details of the Abpromise, please visit <https://www.abcam.com/abpromise> or contact our technical team.

Terms and conditions

- Guarantee only valid for products bought direct from Abcam or one of our authorized distributors