

Product datasheet

Anti-Chk1 (phospho S296) antibody [EPR915] ab79758

Recombinant RabMAb

★★★★★ [1 Abreviews](#) [20 References](#) [3 Images](#)

Overview

Product name	Anti-Chk1 (phospho S296) antibody [EPR915]
Description	Rabbit monoclonal [EPR915] to Chk1 (phospho S296)
Host species	Rabbit
Tested applications	Suitable for: WB Unsuitable for: ICC/IF or IHC-P
Species reactivity	Reacts with: Human
Immunogen	Synthetic peptide. This information is proprietary to Abcam and/or its suppliers.
Positive control	283T cell lysate treated with UV and AP; HeLa cells.
General notes	<p>This product is a recombinant monoclonal antibody, which offers several advantages including:</p> <ul style="list-style-type: none">- High batch-to-batch consistency and reproducibility- Improved sensitivity and specificity- Long-term security of supply- Animal-free production <p>For more information see here.</p> <p>Our RabMAb[®] technology is a patented hybridoma-based technology for making rabbit monoclonal antibodies. For details on our patents, please refer to RabMAb[®] patents.</p> <p>Mouse, Rat: We have preliminary internal testing data to indicate this antibody may not react with these species. Please contact us for more information.</p>

Properties

Form	Liquid
Storage instructions	Shipped at 4°C. Store at -20°C. Stable for 12 months at -20°C.
Storage buffer	pH: 7.20 Preservative: 0.05% Sodium azide Constituents: 40% Glycerol (glycerin, glycerine), 0.1% BSA, 9.85% Tris glycine
Purity	Protein A purified
Clonality	Monoclonal
Clone number	EPR915

Isotype

IgG

Applications

The Abpromise guarantee

Our **Abpromise guarantee** covers the use of ab79758 in the following tested applications.

The application notes include recommended starting dilutions; optimal dilutions/concentrations should be determined by the end user.

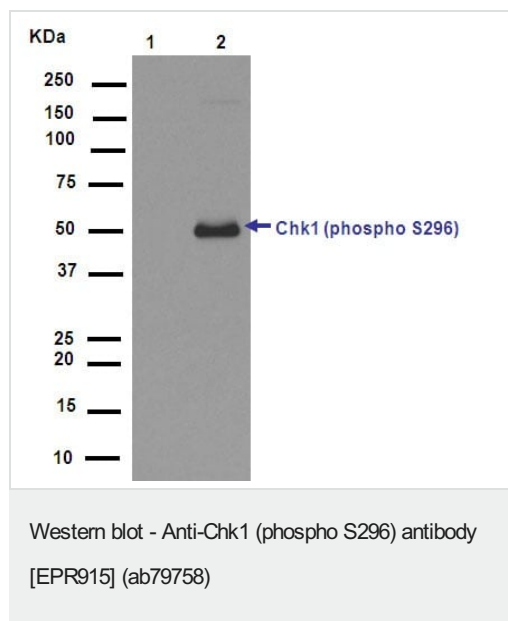
Application	Abreviews	Notes
WB	★★★★★ (1)	1/1000. Detects a band of approximately 54 kDa (predicted molecular weight: 54 kDa). For unpurified use at 1/1000 - 1/2000

Application notes

Is unsuitable for ICC/IF or IHC-P.

Target

Images



All lanes : Anti-Chk1 (phospho S296) antibody [EPR915] (ab79758) at 1/1500 dilution

Lane 1 : Untreated 293 cell lysate

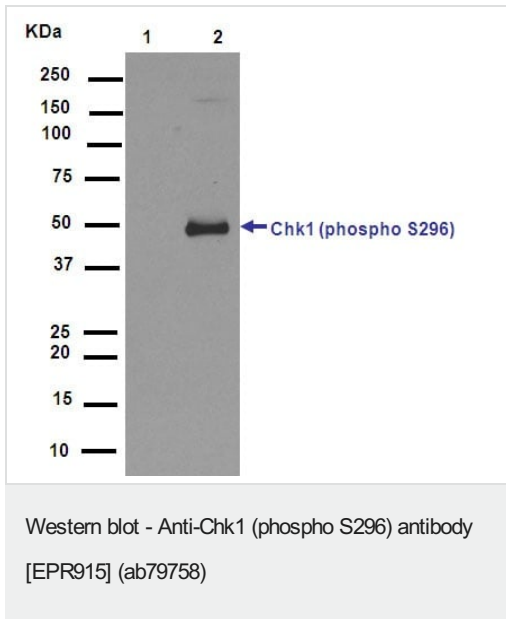
Lane 2 : Treated with Calyculin A 293 cell lysate

Lysates/proteins at 10 µg per lane.

Secondary

All lanes : Goat Anti-Rabbit IgG, (H+L), HRP conjugated at 1/1000 dilution

Predicted band size: 54 kDa



All lanes : Anti-Chk1 (phospho S296) antibody [EPR915] (ab79758) at 1/1000 dilution (Unpurified)

Lane 1 : Untreated 293 cell Lysate

Lane 2 : 293 cell lysate, treated with Calyculin





Lysates/proteins at 10 µg per lane.

Secondary

All lanes : Goat Anti-Rabbit IgG, (H+L), HRP conjugated at 1/1000 dilution

Predicted band size: 54 kDa

Why choose a recombinant antibody?

 <p>Research with confidence Consistent and reproducible results</p>	 <p>Long-term and scalable supply Recombinant technology</p>
 <p>Success from the first experiment Confirmed specificity</p>	 <p>Ethical standards compliant Animal-free production</p>

Anti-Chk1 (phospho S296) antibody [EPR915] (ab79758)

Please note: All products are "FOR RESEARCH USE ONLY. NOT FOR USE IN DIAGNOSTIC PROCEDURES"

Our Abpromise to you: Quality guaranteed and expert technical support

- Replacement or refund for products not performing as stated on the datasheet
- Valid for 12 months from date of delivery
- Response to your inquiry within 24 hours

- We provide support in Chinese, English, French, German, Japanese and Spanish
- Extensive multi-media technical resources to help you
- We investigate all quality concerns to ensure our products perform to the highest standards

If the product does not perform as described on this datasheet, we will offer a refund or replacement. For full details of the Abpromise, please visit <https://www.abcam.com/abpromise> or contact our technical team.

Terms and conditions

- Guarantee only valid for products bought direct from Abcam or one of our authorized distributors