



Product datasheet

Anti-Chk1 (phospho S317) antibody [Chk1S317-G1] ab278717

Recombinant

[1 References](#) [5 Images](#)

Overview

Product name	Anti-Chk1 (phospho S317) antibody [Chk1S317-G1]
Description	Rabbit monoclonal [Chk1S317-G1] to Chk1 (phospho S317)
Host species	Rabbit
Tested applications	Suitable for: WB, Flow Cyt
Species reactivity	Reacts with: Mouse, Human, African green monkey
Immunogen	Synthetic peptide within Human Chk1 (phospho S317). The exact immunogen sequence used to generate this antibody is proprietary information. If additional detail on the immunogen is needed to determine the suitability of the antibody for your needs, please contact our Scientific Support team to discuss your requirements. Database link: O14757
	 Run BLAST with  Run BLAST with
Positive control	WB: COS7 (treated with UV + TPA) cell extract. Flow cyt: K562 and NIH/3T3 cells (both treated with IFNa + IL4 + pervanadate); K562 cells (treated with pervanadate).
General notes	This product is a recombinant monoclonal antibody, which offers several advantages including: <ul style="list-style-type: none"> - High batch-to-batch consistency and reproducibility - Improved sensitivity and specificity - Long-term security of supply - Animal-free production For more information see here .

Properties

Form	Liquid
Storage instructions	Shipped at 4°C. Store at +4°C short term (1-2 weeks). Upon delivery aliquot. Store at -20°C long term. Avoid freeze / thaw cycle.
Storage buffer	Preservative: 0.02% Sodium azide Constituents: 49.88% PBS, 50% Glycerol (glycerin, glycerine), 0.1% BSA
Purity	Protein A/G purified
Clonality	Monoclonal

Clone number	Chk1S317-G1
Isotype	IgG
Light chain type	kappa

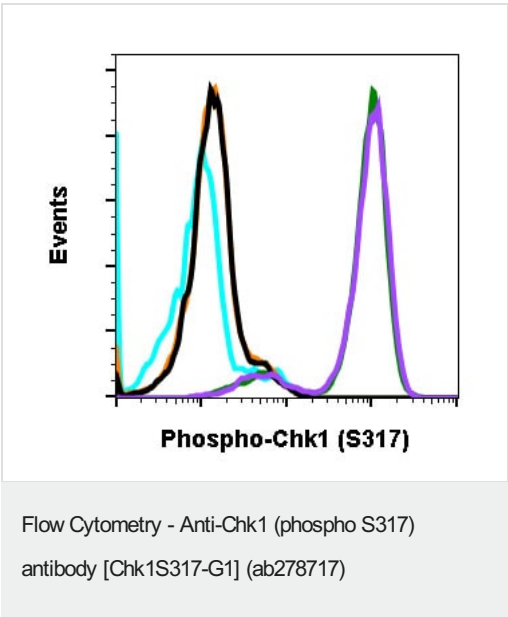
Applications

The Abpromise guarantee Our **Abpromise guarantee** covers the use of ab278717 in the following tested applications. The application notes include recommended starting dilutions; optimal dilutions/concentrations should be determined by the end user.

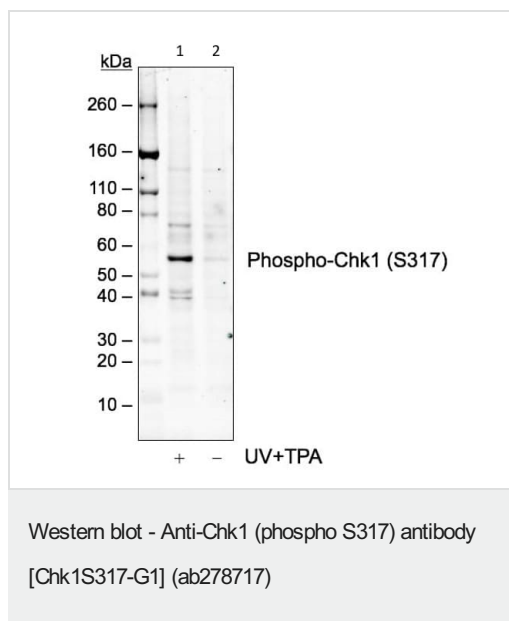
Application	Abreviews	Notes
WB		Use a concentration of 0.01 µg/ml. Predicted molecular weight: 54 kDa.
Flow Cyt		Use a concentration of 0.001 - 1 µg/ml.

Target

Images



Peptide blocking flow cytometric analysis of K562 cells secondary antibody only negative control (light blue) or using 0.1 µg/mL of isotype control (orange) or treated with pervanadate and using 0.1 µg/mL of ab278717 (green) or pervanadate and blocked with phospho peptide (black) or pervanadate and blocked with non-phospho peptide (purple).

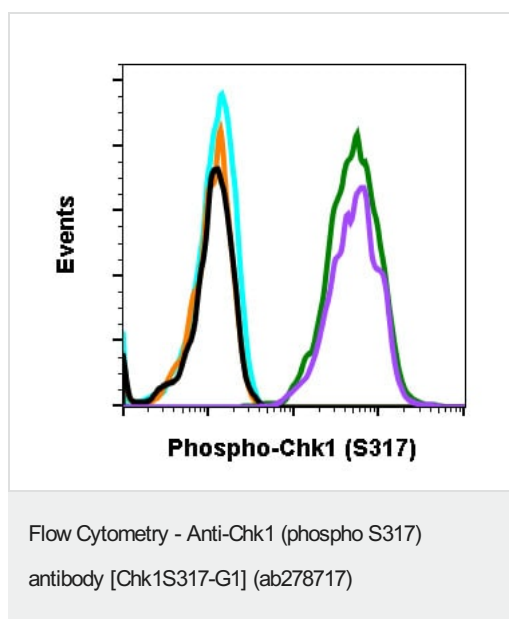


All lanes : Anti-Chk1 (phospho S317) antibody [Chk1S317-G1] (ab278717) at 0.01 $\mu\text{g/ml}$

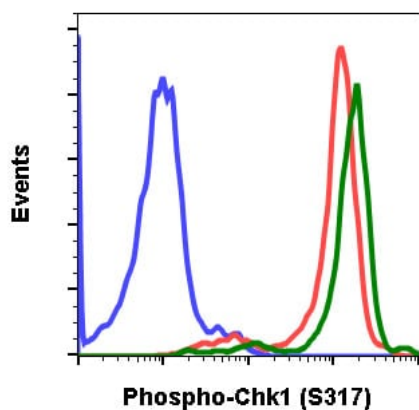
Lane 1 : COS7 cell extract treated with UV+ TPA

Lane 2 : COS7 cell extract untreated with UV+ TPA

Predicted band size: 54 kDa



Peptide blocking flow cytometric analysis of NIH3T3 cells
secondary antibody only negative control (light blue) or using 0.1 $\mu\text{g/mL}$ of isotype control (orange) or treated with IFNa + IL4 + pervanadate and using 0.1 $\mu\text{g/mL}$ of ab278717 (green) or IFNa + IL4 + Pv and blocked with phospho peptide (black) or IFNa + IL4 + Pv and blocked with non-phospho peptide (purple).



Flow cytometric analysis of K562 cells secondary antibody only negative control (blue) or untreated (red) or treated with IFN α + IL4 + pervanadate (green) using ab278717 at 0.1 μ g/mL.

Flow Cytometry - Anti-Chk1 (phospho S317)
antibody [Chk1S317-G1] (ab278717)

Why choose a
recombinant antibody?



**Research with
confidence**
Consistent and
reproducible results



**Long-term and
scalable supply**
Recombinant
technology



**Success from the
first experiment**
Confirmed
specificity



**Ethical standards
compliant**
Animal-free
production

Anti-Chk1 (phospho S317) antibody [Chk1S317-G1]
(ab278717)

Please note: All products are "FOR RESEARCH USE ONLY. NOT FOR USE IN DIAGNOSTIC PROCEDURES"

Our Abpromise to you: Quality guaranteed and expert technical support

- Replacement or refund for products not performing as stated on the datasheet
- Valid for 12 months from date of delivery
- Response to your inquiry within 24 hours

- We provide support in Chinese, English, French, German, Japanese and Spanish
- Extensive multi-media technical resources to help you
- We investigate all quality concerns to ensure our products perform to the highest standards

If the product does not perform as described on this datasheet, we will offer a refund or replacement. For full details of the Abpromise, please visit <https://www.abcam.com/abpromise> or contact our technical team.

Terms and conditions

- Guarantee only valid for products bought direct from Abcam or one of our authorized distributors