


## Product datasheet

### Anti-CHM antibody [EPR7142] ab134964

Recombinant **RabMAb**

★★★★★ [2 Abreviews](#) [2 References](#) [3 Images](#)

#### Overview

<b>Product name</b>	Anti-CHM antibody [EPR7142]
<b>Description</b>	Rabbit monoclonal [EPR7142] to CHM
<b>Host species</b>	Rabbit
<b>Tested applications</b>	<b>Suitable for:</b> WB, ICC/IF <b>Unsuitable for:</b> IHC-P or IP
<b>Species reactivity</b>	<b>Reacts with:</b> Human <b>Predicted to work with:</b> Mouse, Rat 
<b>Immunogen</b>	Synthetic peptide. This information is proprietary to Abcam and/or its suppliers.
<b>Positive control</b>	HeLa, Y79, A431, and 293T cell lysates. A431 cells.
<b>General notes</b>	<p>This product is a recombinant monoclonal antibody, which offers several advantages including:</p> <ul style="list-style-type: none"> <li>- High batch-to-batch consistency and reproducibility</li> <li>- Improved sensitivity and specificity</li> <li>- Long-term security of supply</li> <li>- Animal-free production</li> </ul> <p>For more information <a href="#">see here</a>.</p> <p>Our RabMAb<sup>®</sup> technology is a patented hybridoma-based technology for making rabbit monoclonal antibodies. For details on our patents, please refer to <a href="#">RabMAb<sup>®</sup> patents</a>.</p>

#### Properties

<b>Form</b>	Liquid
<b>Storage instructions</b>	Shipped at 4°C. Store at -20°C. Stable for 12 months at -20°C.
<b>Storage buffer</b>	pH: 7.2 Preservative: 0.01% Sodium azide Constituents: 9% PBS, 40% Glycerol (glycerin, glycerine), 0.05% BSA, 50% Tissue culture supernatant
<b>Purity</b>	Tissue culture supernatant
<b>Clonality</b>	Monoclonal
<b>Clone number</b>	EPR7142

Isotype

IgG

## Applications

### The Abpromise guarantee

Our **Abpromise guarantee** covers the use of ab134964 in the following tested applications.

The application notes include recommended starting dilutions; optimal dilutions/concentrations should be determined by the end user.

Application	Abreviews	Notes
WB	★★★★★ (1)	1/1000 - 1/10000. Detects a band of approximately 95 kDa (predicted molecular weight: 73 kDa).
ICC/IF		1/250 - 1/500.

### Application notes

Is unsuitable for IHC-P or IP.

## Target

### Function

Binds unprenylated Rab proteins, presents it to the catalytic Rab GGTase dimer, and remains bound to it after the geranylgeranyl transfer reaction. The component A is thought to be regenerated by transferring its prenylated Rab back to the donor membrane. Also a pre-formed complex consisting of CHM and the Rab GGTase dimer (RGGT or component B) can bind to and prenylate Rab proteins; this alternative pathway is proposed to be the predominant pathway for Rab protein geranylgeranylation.

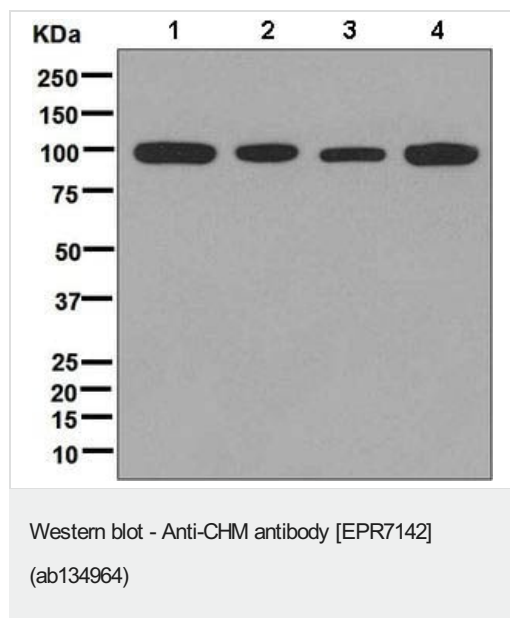
### Involvement in disease

Defects in CHM are the cause of choroideremia (CHM) [MIM:303100]. An X-linked recessive disease characterized by a slowly progressive degeneration of the choroid, photoreceptors, and retinal pigment epithelium. Affected males develop night blindness in their teenage years followed by loss of peripheral vision and complete blindness at middle age. Carrier females are generally asymptomatic but funduscopy examination often shows patchy areas of chorioretinal atrophy.

### Sequence similarities

Belongs to the Rab GDI family.

## Images



**All lanes :** Anti-CHM antibody [EPR7142] (ab134964) at 1/1000 dilution

**Lane 1 :** HeLa cell lysate

**Lane 2 :** Y79 cell lysate

**Lane 3 :** A431 cell lysate

**Lane 4 :** 293T cell lysate

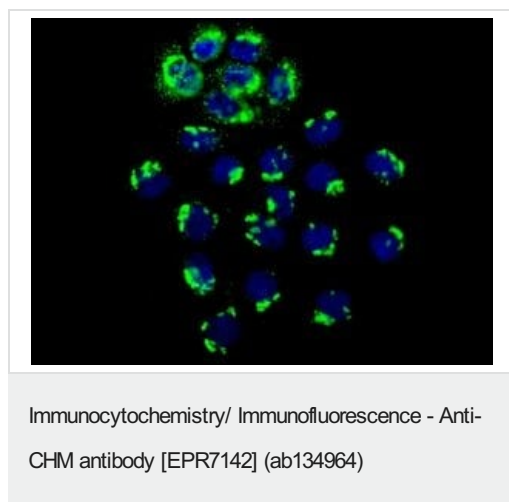
Lysates/proteins at 10 µg per lane.

#### Secondary

**All lanes :** HRP labelled goat anti-rabbit at 1/2000 dilution





**Predicted band size:** 73 kDa

**Observed band size:** 95 kDa



Immunofluorescence analysis of CHM in A431 cells, using ab134964 at a dilution of 1/250.

Why choose a recombinant antibody?

 <p><b>Research with confidence</b> Consistent and reproducible results</p>	 <p><b>Long-term and scalable supply</b> Recombinant technology</p>
 <p><b>Success from the first experiment</b> Confirmed specificity</p>	 <p><b>Ethical standards compliant</b> Animal-free production</p>

Anti-CHM antibody [EPR7142] (ab134964)

**Please note:** All products are "FOR RESEARCH USE ONLY. NOT FOR USE IN DIAGNOSTIC PROCEDURES"

### **Our Abpromise to you: Quality guaranteed and expert technical support**

---

- Replacement or refund for products not performing as stated on the datasheet
- Valid for 12 months from date of delivery
- Response to your inquiry within 24 hours
- We provide support in Chinese, English, French, German, Japanese and Spanish
- Extensive multi-media technical resources to help you
- We investigate all quality concerns to ensure our products perform to the highest standards

If the product does not perform as described on this datasheet, we will offer a refund or replacement. For full details of the Abpromise, please visit <https://www.abcam.com/abpromise> or contact our technical team.

### **Terms and conditions**

---

- Guarantee only valid for products bought direct from Abcam or one of our authorized distributors