


Product datasheet

Anti-CHMP1 α antibody [EPR11939] - BSA and Azide free ab250060

Recombinant RabMAb

[4 Images](#)

Overview

Product name	Anti-CHMP1 α antibody [EPR11939] - BSA and Azide free
Description	Rabbit monoclonal [EPR11939] to CHMP1 α - BSA and Azide free
Host species	Rabbit
Tested applications	Suitable for: Flow Cyt (Intra), WB, IP Unsuitable for: ICC/IF or IHC-P
Species reactivity	Reacts with: Human Predicted to work with: Mouse, Rat 
Immunogen	Synthetic peptide. This information is proprietary to Abcam and/or its suppliers.
General notes	<p>ab250060 is the carrier-free version of ab178686.</p> <p>Our carrier-free antibodies are typically supplied in a PBS-only formulation, purified and free of BSA, sodium azide and glycerol. The carrier-free buffer and high concentration allow for increased conjugation efficiency.</p> <p>This conjugation-ready format is designed for use with fluorochromes, metal isotopes, oligonucleotides, and enzymes, which makes them ideal for antibody labelling, functional and cell-based assays, flow-based assays (e.g. mass cytometry) and Multiplex Imaging applications.</p> <p>Use our conjugation kits for antibody conjugates that are ready-to-use in as little as 20 minutes with <1 minute hands-on-time and 100% antibody recovery: available for fluorescent dyes, HRP, biotin and gold.</p> <p>This product is compatible with the Maxpar[®] Antibody Labeling Kit from Fluidigm, without the need for antibody preparation. Maxpar[®] is a trademark of Fluidigm Canada Inc.</p> <p>This product is a recombinant monoclonal antibody, which offers several advantages including:</p> <ul style="list-style-type: none">- High batch-to-batch consistency and reproducibility- Improved sensitivity and specificity- Long-term security of supply- Animal-free production <p>For more information see here.</p> <p>Our RabMAb[®] technology is a patented hybridoma-based technology for making rabbit monoclonal antibodies. For details on our patents, please refer to RabMAb[®] patents.</p>

Properties

Form	Liquid
Storage instructions	Shipped at 4°C. Store at +4°C. Do Not Freeze.
Storage buffer	pH: 7.2 Constituent: PBS
Carrier free	Yes
Purity	Affinity purified
Clonality	Monoclonal
Clone number	EPR11939
Isotype	IgG

Applications

The Abpromise guarantee Our **Abpromise guarantee** covers the use of ab250060 in the following tested applications. The application notes include recommended starting dilutions; optimal dilutions/concentrations should be determined by the end user.

Application	Abreviews	Notes
Flow Cyt (Intra)		Use at an assay dependent concentration.
WB		Use at an assay dependent concentration. Predicted molecular weight: 22 kDa.
IP		Use at an assay dependent concentration.

Application notes Is unsuitable for ICC/IF or IHC-P.

Target

Function Probable peripherally associated component of the endosomal sorting required for transport complex III (ESCRT-III) which is involved in multivesicular bodies (MVBs) formation and sorting of endosomal cargo proteins into MVBs. MVBs contain intraluminal vesicles (ILVs) that are generated by invagination and scission from the limiting membrane of the endosome and mostly are delivered to lysosomes enabling degradation of membrane proteins, such as stimulated growth factor receptors, lysosomal enzymes and lipids. The MVB pathway appears to require the sequential function of ESCRT-O, -I, -II and -III complexes. ESCRT-III proteins mostly dissociate from the invaginating membrane before the ILV is released. The ESCRT machinery also functions in topologically equivalent membrane fission events, such as the terminal stages of cytokinesis and the budding of enveloped viruses (HIV-1 and other lentiviruses). ESCRT-III proteins are believed to mediate the necessary vesicle extrusion and/or membrane fission activities, possibly in conjunction with the AAA ATPase VPS4. Involved in cytokinesis. Involved in recruiting VPS4A and/or VPS4B to the midbody of dividing cells. May also be involved in chromosome condensation. Targets the Polycomb group (PcG) protein BMI1/PCGF4 to regions of condensed chromatin. May play a role in stable cell cycle progression and in PcG gene silencing.

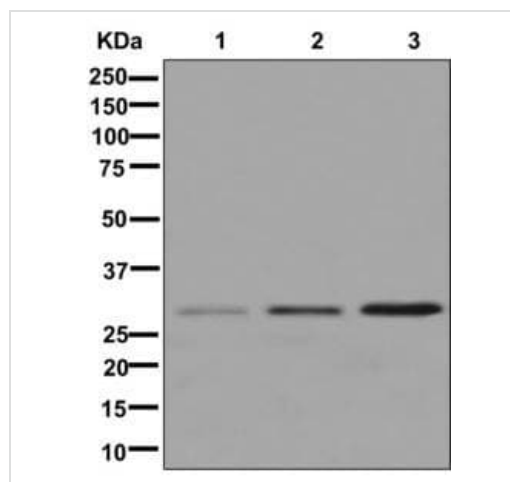
Tissue specificity Expressed in placenta, cultured skin fibroblasts and in osteoblast cell line MG-63.

Sequence similarities Belongs to the SNF7 family.

Cellular localization

Cytoplasm. Endosome membrane. Nucleus matrix. The cytoplasmic form is partially membrane-associated and localizes to early endosomes. The nuclear form remains associated with the chromosome scaffold during mitosis. On overexpression, it localizes to nuclear bodies characterized by nuclease-resistant condensed chromatin.

Images



Western blot - Anti-CHMP1a antibody [EPR11939] - BSA and Azide free (ab250060)

All lanes : Anti-CHMP1a antibody [EPR11939] ([ab178686](#)) at 1/1000 dilution

Lane 1 : HeLa cell lysate

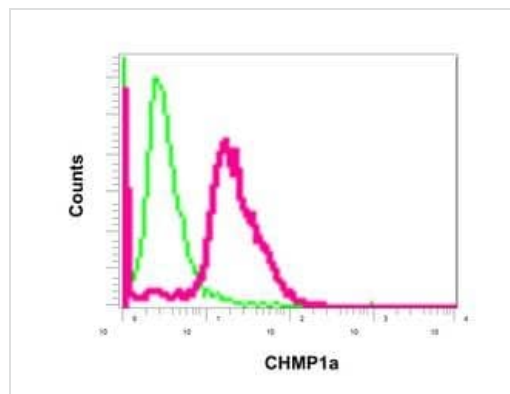
Lane 2 : 293T (Human embryonic kidney epithelial cell) cell lysate

Lane 3 : MCF-7 cell lysate

Lysates/proteins at 10 µg per lane.

Predicted band size: 22 kDa

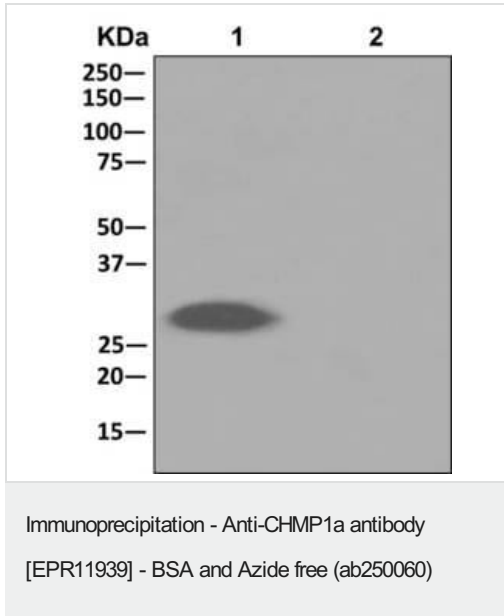
This data was developed using [ab178686](#), the same antibody clone in a different buffer formulation.



Flow Cytometry (Intracellular) - Anti-CHMP1a antibody [EPR11939] - BSA and Azide free (ab250060)





This data was developed using [ab178686](#), the same antibody clone in a different buffer formulation.

Intracellular flow cytometric analysis of permeabilized 293T cells using [ab178686](#) at a 1/10 dilution (red) or a rabbit IgG (negative) (green).



This data was developed using **ab178686**, the same antibody clone in a different buffer formulation. Western blot analysis on immunoprecipitation pellet from (Lane 1) MCF-7 cell lysate or (Lane 2) 1XPBS (negative control) using **ab178686** at a 1/10 dilution for IP and HRP-conjugated anti-rabbit IgG preferentially detecting the non-reduced form of rabbit IgG.

Why choose a recombinant antibody?

 Research with confidence Consistent and reproducible results	 Long-term and scalable supply Recombinant technology
 Success from the first experiment Confirmed specificity	 Ethical standards compliant Animal-free production

Anti-CHMP1a antibody [EPR11939] - BSA and Azide free (ab250060)

Please note: All products are "FOR RESEARCH USE ONLY. NOT FOR USE IN DIAGNOSTIC PROCEDURES"

Our Abpromise to you: Quality guaranteed and expert technical support

- Replacement or refund for products not performing as stated on the datasheet
- Valid for 12 months from date of delivery
- Response to your inquiry within 24 hours

- We provide support in Chinese, English, French, German, Japanese and Spanish
- Extensive multi-media technical resources to help you
- We investigate all quality concerns to ensure our products perform to the highest standards

If the product does not perform as described on this datasheet, we will offer a refund or replacement. For full details of the Abpromise, please visit <https://www.abcam.com/abpromise> or contact our technical team.

Terms and conditions

- Guarantee only valid for products bought direct from Abcam or one of our authorized distributors