

Anti-Cholecystokinin antibody ab27441

[6 References](#) [3 Images](#)

Overview

Product name	Anti-Cholecystokinin antibody
Description	Rabbit polyclonal to Cholecystokinin
Host species	Rabbit
Tested applications	Suitable for: IHC-P, ICC/IF, WB
Species reactivity	Reacts with: Human
Immunogen	Synthetic peptide within Human Cholecystokinin aa 50 to the C-terminus (N terminal). The exact sequence is proprietary. Database link: P06307
Positive control	Stomach. This antibody gave a positive result when used in the following formaldehyde fixed cell lines: CaCO2
General notes	<p>This product is FOR RESEARCH USE ONLY. For commercial use, please contact partnerships@abcam.com.</p> <p>The Life Science industry has been in the grips of a reproducibility crisis for a number of years. Abcam is leading the way in addressing this with our range of recombinant monoclonal antibodies and knockout edited cell lines for gold-standard validation. Please check that this product meets your needs before purchasing.</p> <p>If you have any questions, special requirements or concerns, please send us an inquiry and/or contact our Support team ahead of purchase. Recommended alternatives for this product can be found below, along with publications, customer reviews and Q&As</p>

Properties

Form	Liquid
Storage instructions	Shipped at 4°C. Upon delivery aliquot and store at -20°C. Avoid freeze / thaw cycles.
Storage buffer	pH: 7.60 Preservative: 0.1% Sodium azide Constituents: PBS, 1% BSA
Purity	Immunogen affinity purified
Clonality	Polyclonal
Isotype	IgG

Applications

The Abpromise guarantee

Our **Abpromise guarantee** covers the use of ab27441 in the following tested applications.

The application notes include recommended starting dilutions; optimal dilutions/concentrations should be determined by the end user.

Application	Abreviews	Notes
IHC-P		1/200. Do not perform antigen retrieval. Incubate for 10 minutes at room temperature.
ICC/IF		Use a concentration of 10 µg/ml.
WB		Use at an assay dependent concentration. Predicted molecular weight: 12 kDa.

Target

Function

This peptide hormone induces gall bladder contraction and the release of pancreatic enzymes in the gut. Its function in the brain is not clear. Binding to CCK-A receptors stimulates amylase release from the pancreas, binding to CCK-B receptors stimulates gastric acid secretion.

Sequence similarities

Belongs to the gastrin/cholecystokinin family.

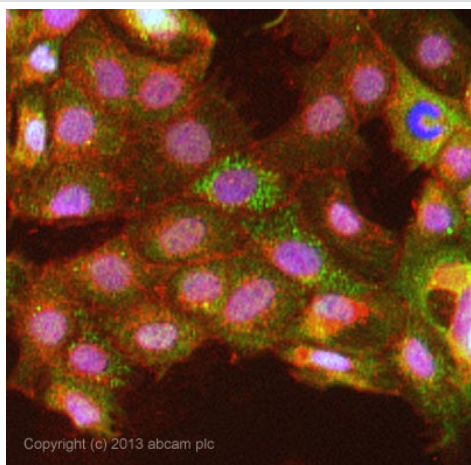
Post-translational modifications

The precursor is cleaved by proteases to produce a number of active cholecystokinins.

Cellular localization

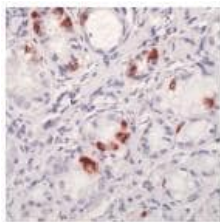
Secreted.

Images



ICC/IF image of ab27441 stained CaCO₂ cells. The cells were 4% formaldehyde fixed (10 min) and then incubated in 1%BSA / 10% normal goat serum / 0.3M glycine in 0.1% PBS-Tween for 1h to permeabilise the cells and block non-specific protein-protein interactions. The cells were then incubated with the antibody ab27441 at 10µg/ml overnight at +4°C. The secondary antibody (green) was DyLight® 488 goat anti- rabbit (**ab96899**) IgG (H+L) used at a 1/250 dilution for 1h. Alexa Fluor® 594 WGA was used to label plasma membranes (red) at a 1/200 dilution for 1h. DAPI was used to stain the cell nuclei (blue) at a concentration of 1.43µM.

Immunocytochemistry/ Immunofluorescence - Anti-Cholecystokinin antibody (ab27441)



Ab27441, at a dilution of 1/200, staining Cholecystokinin in formalin fixed, paraffin embedded stomach tissue by Immunohistochemistry.

Immunohistochemistry (Formalin/PFA-fixed paraffin-embedded sections) - Anti-Cholecystokinin antibody (ab27441)



Anti-Cholecystokinin antibody (ab27441) at 1/25 dilution + Brain cell lysate

Predicted band size: 12 kDa

Observed band size: 12 kDa

Western blot - Anti-Cholecystokinin antibody (ab27441)

Please note: All products are "FOR RESEARCH USE ONLY. NOT FOR USE IN DIAGNOSTIC PROCEDURES"

Our Abpromise to you: Quality guaranteed and expert technical support

- Replacement or refund for products not performing as stated on the datasheet
- Valid for 12 months from date of delivery
- Response to your inquiry within 24 hours
- We provide support in Chinese, English, French, German, Japanese and Spanish
- Extensive multi-media technical resources to help you
- We investigate all quality concerns to ensure our products perform to the highest standards

If the product does not perform as described on this datasheet, we will offer a refund or replacement. For full details of the Abpromise, please visit <https://www.abcam.com/abpromise> or contact our technical team.

Terms and conditions

- Guarantee only valid for products bought direct from Abcam or one of our authorized distributors