


Product datasheet

Anti-Choline Acetyltransferase antibody ab18736

★★★★★ [6 Abreviews](#) [37 References](#) [1 Image](#)

Overview

Product name	Anti-Choline Acetyltransferase antibody
Description	Sheep polyclonal to Choline Acetyltransferase
Host species	Sheep
Tested applications	Suitable for: ICC/IF
Species reactivity	Reacts with: Rat, Pig Predicted to work with: Chicken 
Immunogen	Synthetic peptide: GLFSSYRLPGHTQDTLVAQKSS conjugated to KLH, corresponding to amino acids 167-188 of Pig Choline Acetyltransferase.

 [Run BLAST with](#)

 [Run BLAST with](#)

General notes

The Life Science industry has been in the grips of a reproducibility crisis for a number of years. Abcam is leading the way in addressing this with our range of recombinant monoclonal antibodies and knockout edited cell lines for gold-standard validation. Please check that this product meets your needs before purchasing.

If you have any questions, special requirements or concerns, please send us an inquiry and/or contact our Support team ahead of purchase. Recommended alternatives for this product can be found below, along with publications, customer reviews and Q&As

Properties

Form	Liquid
Storage instructions	Shipped at 4°C. Store at +4°C short term (1-2 weeks). Add glycerol to a final volume of 50% for extra stability and aliquot. Store at -20°C or -80°C. Avoid freeze / thaw cycle.
Purity	Ammonium Sulphate Precipitation
Clonality	Polyclonal
Isotype	IgG

Applications

The Abpromise guarantee Our [Abpromise guarantee](#) covers the use of ab18736 in the following tested applications.

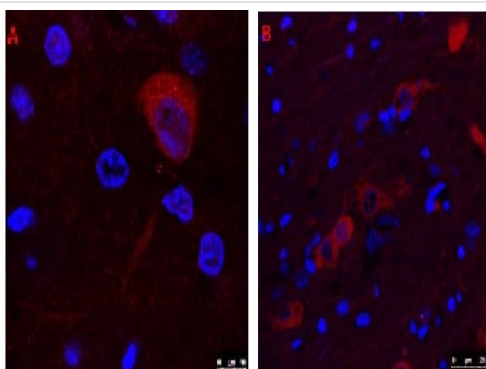
The application notes include recommended starting dilutions; optimal dilutions/concentrations should be determined by the end user.

Application	Abreviews	Notes
ICC/IF		Use at an assay dependent concentration.

Target

Function	Catalyzes the reversible synthesis of acetylcholine (ACh) from acetyl CoA and choline at cholinergic synapses.
Involvement in disease	Myasthenic syndrome, congenital, 6, presynaptic
Sequence similarities	Belongs to the carnitine/choline acetyltransferase family.

Images



Immunofluorescence of Rat Forebrain tissue labeling ChAT with ab18736 using a 1 µg dilution.

Immunocytochemistry/ Immunofluorescence - Anti-Choline Acetyltransferase antibody (ab18736)

Please note: All products are "FOR RESEARCH USE ONLY. NOT FOR USE IN DIAGNOSTIC PROCEDURES"

Our Abpromise to you: Quality guaranteed and expert technical support

- Replacement or refund for products not performing as stated on the datasheet
- Valid for 12 months from date of delivery
- Response to your inquiry within 24 hours
- We provide support in Chinese, English, French, German, Japanese and Spanish
- Extensive multi-media technical resources to help you
- We investigate all quality concerns to ensure our products perform to the highest standards

If the product does not perform as described on this datasheet, we will offer a refund or replacement. For full details of the Abpromise, please visit <https://www.abcam.com/abpromise> or contact our technical team.

Terms and conditions

- Guarantee only valid for products bought direct from Abcam or one of our authorized distributors