




## Product datasheet

# Anti-Choline Acetyltransferase antibody ab6168

★★★★★ [7 Abreviews](#) [13 References](#) [1 Image](#)

### Overview

<b>Product name</b>	Anti-Choline Acetyltransferase antibody
<b>Description</b>	Rabbit polyclonal to Choline Acetyltransferase
<b>Host species</b>	Rabbit
<b>Specificity</b>	Extensive immunohistochemistry indicates localisation to cholinergic nervous system only. Will stain cholinergic neurons in rat central and peripheral nervous systems.
<b>Tested applications</b>	<b>Suitable for:</b> IHC-FrFI
<b>Species reactivity</b>	<b>Reacts with:</b> Rat <b>Predicted to work with:</b> Chicken, Human, Pig, Non human primates  <b>Does not react with:</b> Sheep
<b>Immunogen</b>	Synthetic peptide: H-GLFSSYRLPGHTQDTLVAQKSS conjugated to KLH by a Glutaraldehyde linker, corresponding to amino acids 168-189 of Choline Acetyltransferase. <div>  <a href="#">Run BLAST with</a>  <a href="#">Run BLAST with</a> </div>
<b>General notes</b>	<p>This antibody appears to have identical characteristics to those described by Benecke et al (1993). The antigen is the same. It is an excellent reagent for immunohistochemistry for both peripheral and central nervous system, staining both cell bodies and nerve terminals.</p> <p>The Life Science industry has been in the grips of a reproducibility crisis for a number of years. Abcam is leading the way in addressing this with our range of recombinant monoclonal antibodies and knockout edited cell lines for gold-standard validation. Please check that this product meets your needs before purchasing.</p> <p>If you have any questions, special requirements or concerns, please send us an inquiry and/or contact our Support team ahead of purchase. Recommended alternatives for this product can be found below, along with publications, customer reviews and Q&amp;As</p>

### Properties

<b>Form</b>	Liquid
<b>Storage instructions</b>	Shipped at 4°C. Store at +4°C short term (1-2 weeks). Add glycerol to a final volume of 50% for extra stability and aliquot. Store at -20°C or -80°C. Avoid freeze / thaw cycle.
<b>Purity</b>	Whole antiserum

<b>Clonality</b>	Polyclonal
<b>Isotype</b>	IgG

## Applications

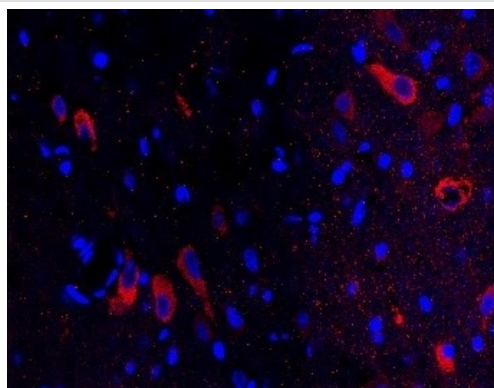
**The Abpromise guarantee** Our **Abpromise guarantee** covers the use of ab6168 in the following tested applications. The application notes include recommended starting dilutions; optimal dilutions/concentrations should be determined by the end user.

Application	Abreviews	Notes
IHC-FrFI		Use at an assay dependent concentration.

## Target

<b>Function</b>	Catalyzes the reversible synthesis of acetylcholine (ACh) from acetyl CoA and choline at cholinergic synapses.
<b>Involvement in disease</b>	Myasthenic syndrome, congenital, 6, presynaptic
<b>Sequence similarities</b>	Belongs to the carnitine/choline acetyltransferase family.

## Images



Immunohistochemistry analysis of free-floating rat forebrain tissue labelling Choline Acetyltransferase with ab6168 at a dilution of 1/100.

Immunohistochemistry - Free Floating - Anti-Choline Acetyltransferase antibody (ab6168)

**Please note:** All products are "FOR RESEARCH USE ONLY. NOT FOR USE IN DIAGNOSTIC PROCEDURES"

## Our Abpromise to you: Quality guaranteed and expert technical support

- Replacement or refund for products not performing as stated on the datasheet
- Valid for 12 months from date of delivery
- Response to your inquiry within 24 hours
- We provide support in Chinese, English, French, German, Japanese and Spanish

- Extensive multi-media technical resources to help you
- We investigate all quality concerns to ensure our products perform to the highest standards

If the product does not perform as described on this datasheet, we will offer a refund or replacement. For full details of the Abpromise, please visit <https://www.abcam.com/abpromise> or contact our technical team.

#### **Terms and conditions**

---

- Guarantee only valid for products bought direct from Abcam or one of our authorized distributors