

# Anti-Choline kinase alpha antibody ab235938

3 Images

### Overview

<b>Product name</b>	Anti-Choline kinase alpha antibody
<b>Description</b>	Rabbit polyclonal to Choline kinase alpha
<b>Host species</b>	Rabbit
<b>Tested applications</b>	<b>Suitable for:</b> WB, IHC-P, ICC/IF
<b>Species reactivity</b>	<b>Reacts with:</b> Human
<b>Immunogen</b>	Recombinant fragment corresponding to Human Choline kinase alpha aa 79-173. Database link: <a href="#">P35790</a>
<b>Positive control</b>	WB: MCF7 whole cell lysate. IHC-P: Human lung cancer tissue. ICC/IF: HepG2 cells.
<b>General notes</b>	<p>The Life Science industry has been in the grips of a reproducibility crisis for a number of years. Abcam is leading the way in addressing this with our range of recombinant monoclonal antibodies and knockout edited cell lines for gold-standard validation. Please check that this product meets your needs before purchasing.</p> <p>If you have any questions, special requirements or concerns, please send us an inquiry and/or contact our Support team ahead of purchase. Recommended alternatives for this product can be found below, along with publications, customer reviews and Q&amp;As</p>

### Properties

<b>Form</b>	Liquid
<b>Storage instructions</b>	Shipped at 4°C. Store at +4°C short term (1-2 weeks). Upon delivery aliquot. Store at -20°C long term. Avoid freeze / thaw cycle.
<b>Storage buffer</b>	pH: 7.40 Preservative: 0.03% Proclin 300 Constituents: PBS, 50% Glycerol (glycerin, glycerine)
<b>Purity</b>	Protein G purified
<b>Purification notes</b>	Purity >95%
<b>Clonality</b>	Polyclonal
<b>Isotype</b>	IgG

### Applications

## The Abpromise guarantee

Our **Abpromise guarantee** covers the use of ab235938 in the following tested applications.

The application notes include recommended starting dilutions; optimal dilutions/concentrations should be determined by the end user.

Application	Abreviews	Notes
WB		1/500 - 1/5000. Predicted molecular weight: 52 kDa.
IHC-P		1/20 - 1/200.
ICC/IF		1/50 - 1/200.

## Target

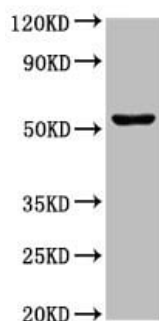
### Relevance

The dominant pathway for biosynthesis of phosphatidylcholine occurs through the CDP-choline pathway. Choline kinase alpha (CHK) is the first enzyme in the pathway and may thereby play an upstream regulatory role in lipid transport and metabolism. CHK additionally catalyzes phosphorylation of ethanolamine.

### Cellular localization

Cytoplasmic

## Images



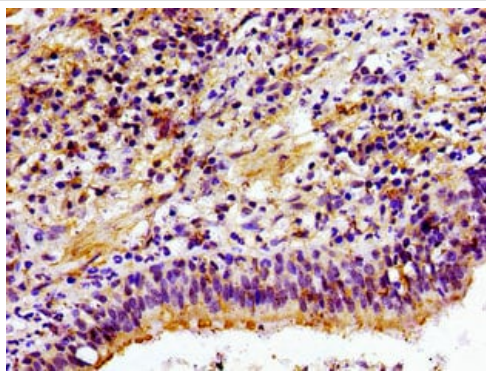
Western blot - Anti-Choline kinase alpha antibody (ab235938)

Anti-Choline kinase alpha antibody (ab235938) at 1/500 dilution + MCF7 (human breast adenocarcinoma cell line) whole cell lysate

### Secondary

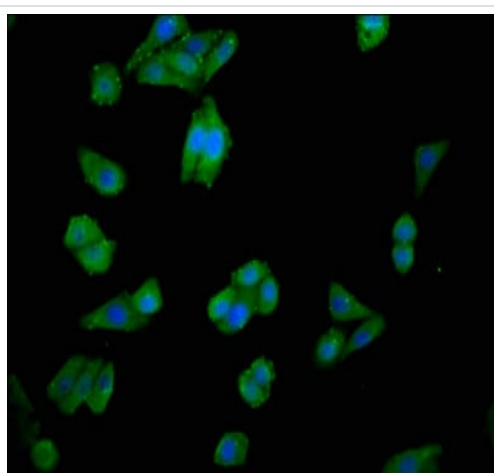
Goat polyclonal to rabbit IgG at 1/50000 dilution

**Predicted band size:** 52 kDa



Immunohistochemistry (Formalin/PFA-fixed paraffin-embedded sections) - Anti-Choline kinase alpha antibody (ab235938)

Paraffin-embedded human lung cancer tissue stained for Choline kinase alpha using ab235938 at 1/100 dilution in immunohistochemical analysis.



Immunocytochemistry/ Immunofluorescence - Anti-Choline kinase alpha antibody (ab235938)

4% formaldehyde-fixed, 0.2% Triton X-100 permeabilized HepG2 (human liver hepatocellular carcinoma cell line) cells stained for Choline kinase alpha (green) using ab235938 at 1/100 dilution in ICC/IF. Secondary antibody is Alexa Fluor® 488-conjugated Goat Anti-Rabbit IgG (H+L).

**Please note:** All products are "FOR RESEARCH USE ONLY. NOT FOR USE IN DIAGNOSTIC PROCEDURES"

### Our Abpromise to you: Quality guaranteed and expert technical support

- Replacement or refund for products not performing as stated on the datasheet
- Valid for 12 months from date of delivery
- Response to your inquiry within 24 hours
- We provide support in Chinese, English, French, German, Japanese and Spanish
- Extensive multi-media technical resources to help you
- We investigate all quality concerns to ensure our products perform to the highest standards

If the product does not perform as described on this datasheet, we will offer a refund or replacement. For full details of the Abpromise, please visit <https://www.abcam.com/abpromise> or contact our technical team.

### Terms and conditions

- Guarantee only valid for products bought direct from Abcam or one of our authorized distributors