


### Anti-Choline kinase alpha antibody ab88053

★★★★★ [3 Abreviews](#) [13 References](#) [5 Images](#)

#### Overview

<b>Product name</b>	Anti-Choline kinase alpha antibody
<b>Description</b>	Rabbit polyclonal to Choline kinase alpha
<b>Host species</b>	Rabbit
<b>Tested applications</b>	<b>Suitable for:</b> WB, ICC/IF
<b>Species reactivity</b>	<b>Reacts with:</b> Mouse, Rat, Human <b>Predicted to work with:</b> Zebrafish 
<b>Immunogen</b>	Synthetic peptide. This information is proprietary to Abcam and/or its suppliers.
<b>Positive control</b>	Recombinant Human Choline kinase alpha protein ( <a href="#">ab114521</a> ) can be used as a positive control in WB. This antibody gave a positive signal in the following lysates: Human Breast Tissue; Mouse Lung Tissue; Mouse Brain Tissue; Rat Brain Tissue; MCF7 Whole Cell; HepG2 Whole Cell; HeLa Whole Cell; Jurkat Whole Cell; A549, Human Glioblastoma Whole Cell.
<b>General notes</b>	<p>The Life Science industry has been in the grips of a reproducibility crisis for a number of years. Abcam is leading the way in addressing this with our range of recombinant monoclonal antibodies and knockout edited cell lines for gold-standard validation. Please check that this product meets your needs before purchasing.</p> <p>If you have any questions, special requirements or concerns, please send us an inquiry and/or contact our Support team ahead of purchase. Recommended alternatives for this product can be found below, along with publications, customer reviews and Q&amp;As</p>

#### Properties

<b>Form</b>	Liquid
<b>Storage instructions</b>	Shipped at 4°C. Store at +4°C short term (1-2 weeks). Upon delivery aliquot. Store at -20°C or -80°C. Avoid freeze / thaw cycle.
<b>Storage buffer</b>	<p>pH: 7.40</p> <p>Preservative: 0.02% Sodium azide</p> <p>Constituent: PBS</p> <p>Batches of this product that have a concentration &lt; 1mg/ml may have BSA added as a stabilising agent. If you would like information about the formulation of a specific lot, please contact our scientific support team who will be happy to help.</p>

<b>Purity</b>	Immunogen affinity purified
<b>Clonality</b>	Polyclonal
<b>Isotype</b>	IgG

## Applications

**The Abpromise guarantee** Our **Abpromise guarantee** covers the use of ab88053 in the following tested applications. The application notes include recommended starting dilutions; optimal dilutions/concentrations should be determined by the end user.

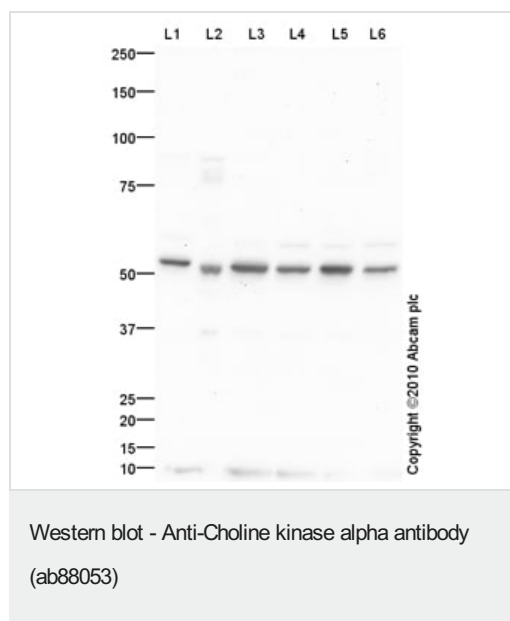
Application	Abreviews	Notes
<b>WB</b>	★★★★★ (1)	Use a concentration of 1 µg/ml. Detects a band of approximately 52 kDa (predicted molecular weight: 52 kDa).
<b>ICC/IF</b>	★★★★★ (1)	Use a concentration of 5 µg/ml.

## Target

**Relevance** The dominant pathway for biosynthesis of phosphatidylcholine occurs through the CDP-choline pathway. Choline kinase alpha (CHK) is the first enzyme in the pathway and may thereby play an upstream regulatory role in lipid transport and metabolism. CHK additionally catalyzes phosphorylation of ethanolamine.

**Cellular localization** Cytoplasmic

## Images



**All lanes :** Anti-Choline kinase alpha antibody (ab88053) at 1 µg/ml

**Lane 1 :** MCF7 (Human breast adenocarcinoma cell line) Whole Cell Lysate

**Lane 2 :** Human breast tissue lysate - total protein (**ab30090**)

**Lane 3 :** HepG2 (Human hepatocellular liver carcinoma cell line) Whole Cell Lysate

**Lane 4 :** HeLa (Human epithelial carcinoma cell line) Whole Cell Lysate

**Lane 5 :** Jurkat (Human T cell lymphoblast-like cell line) Whole Cell Lysate

**Lane 6 :** A549 (Human lung adenocarcinoma epithelial cell line) Whole Cell Lysate

Lysates/proteins at 10 µg per lane.

## Secondary

**All lanes :** Goat polyclonal to Rabbit IgG - H&L - Pre-Adsorbed (HRP) at 1/3000 dilution

Developed using the ECL technique.

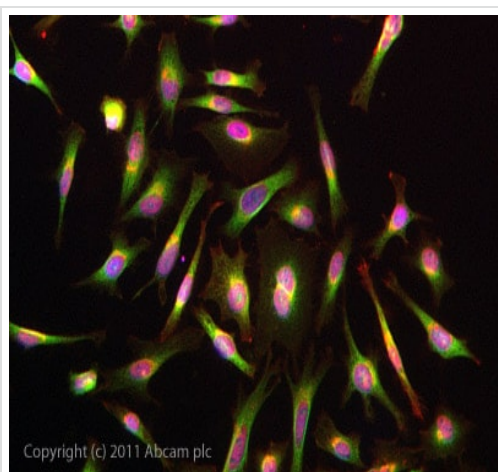
Performed under reducing conditions.

**Predicted band size:** 52 kDa

**Observed band size:** 52 kDa

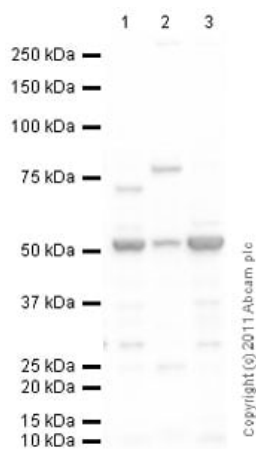
**Additional bands at:** 58 kDa. We are unsure as to the identity of these extra bands.

**Exposure time:** 2 minutes



Immunocytochemistry/ Immunofluorescence - Anti-Choline kinase alpha antibody (ab88053)

ICC/IF image of ab88053 stained HeLa cells. The cells were 4% PFA fixed (10 min) and then incubated in 1%BSA / 10% normal goat serum / 0.3M glycine in 0.1% PBS-Tween for 1h to permeabilise the cells and block non-specific protein-protein interactions. The cells were then incubated with the antibody (ab88053, 5µg/ml) overnight at +4°C. The secondary antibody (green) was [ab96899](#) Dylight 488 goat anti-rabbit IgG (H+L) used at a 1/250 dilution for 1h. Alexa Fluor® 594 WGA was used to label plasma membranes (red) at a 1/200 dilution for 1h. DAPI was used to stain the cell nuclei (blue) at a concentration of 1.43µM.



Western blot - Anti-Choline kinase alpha antibody (ab88053)

**All lanes :** Anti-Choline kinase alpha antibody (ab88053) at 1 µg/ml

**Lane 1 :** Brain (Mouse) Tissue Lysate

**Lane 2 :** Mouse lung normal tissue lysate - total protein ([ab29297](#))

**Lane 3 :** Brain (Rat) Tissue Lysate

Lysates/proteins at 10 µg per lane.

**Secondary**

**All lanes :** Goat Anti-Rabbit IgG H&L (HRP) preadsorbed ([ab97080](#)) at 1/5000 dilution

Developed using the ECL technique.

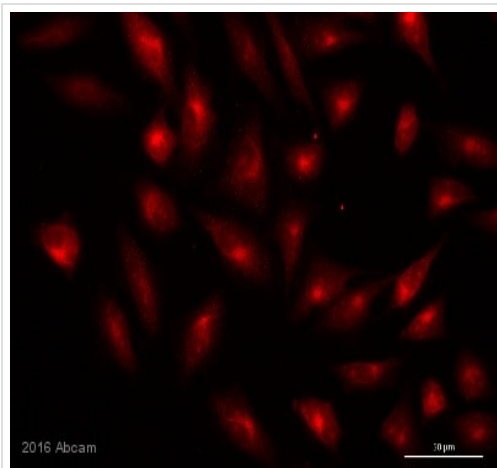
Performed under reducing conditions.

**Predicted band size:** 52 kDa

**Observed band size:** 52 kDa

**Additional bands at:** 72 kDa, 78 kDa. We are unsure as to the identity of these extra bands.

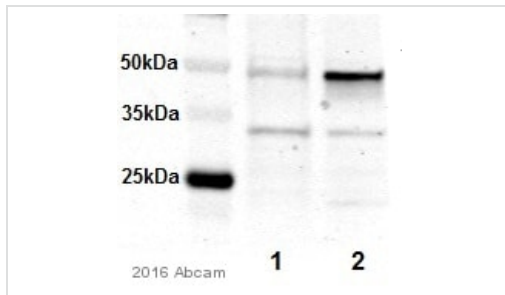
**Exposure time:** 1 minute



Immunocytochemistry/ Immunofluorescence - Anti-Choline kinase alpha antibody (ab88053)

This image is courtesy of an anonymous Abreview.

Immunocytochemistry/ Immunofluorescence analysis of human glioblastoma cells labeling Choline kinase alpha with ab88053 at 1/250 dilution. Cells were fixed in paraformaldehyde and permeabilized with TritonX-100. A goat anti-rabbit Alexa Fluor594 was used as the secondary antibody at 1/1000 dilution.



Western blot - Anti-Choline kinase alpha antibody (ab88053)

This image is courtesy of an anonymous Abreview

**All lanes :** Anti-Choline kinase alpha antibody (ab88053) at 1/1000 dilution

**Lane 1 :** Choline kinase alpha knockdown Human Glioblastoma whole cell lysate

**Lane 2 :** Human Glioblastoma (Control) whole cell lysate

Lysates/proteins at 50 μg per lane.

### Secondary

**All lanes :** goat-anti-rabbit IRDye800CW at 1/10000 dilution

Performed under reducing conditions.

**Predicted band size:** 52 kDa

**Exposure time:** 1 minute

**Please note:** All products are "FOR RESEARCH USE ONLY. NOT FOR USE IN DIAGNOSTIC PROCEDURES"

### **Our Abpromise to you: Quality guaranteed and expert technical support**

---

- Replacement or refund for products not performing as stated on the datasheet
- Valid for 12 months from date of delivery
- Response to your inquiry within 24 hours
  
- We provide support in Chinese, English, French, German, Japanese and Spanish
- Extensive multi-media technical resources to help you
- We investigate all quality concerns to ensure our products perform to the highest standards

If the product does not perform as described on this datasheet, we will offer a refund or replacement. For full details of the Abpromise, please visit <https://www.abcam.com/abpromise> or contact our technical team.

### **Terms and conditions**

---

- Guarantee only valid for products bought direct from Abcam or one of our authorized distributors