

Product datasheet

Anti-CHRD1 antibody ab103369

[2 References](#) [2 Images](#)

Overview

Product name	Anti-CHRD1 antibody
Description	Rabbit polyclonal to CHRD1
Host species	Rabbit
Tested applications	Suitable for: WB
Species reactivity	Reacts with: Mouse, Human
Immunogen	Recombinant full length protein, corresponding to amino acids 1-450 of Human CHRD1 (ENSP00000361115)
General notes	<p>The Life Science industry has been in the grips of a reproducibility crisis for a number of years. Abcam is leading the way in addressing this with our range of recombinant monoclonal antibodies and knockout edited cell lines for gold-standard validation. Please check that this product meets your needs before purchasing.</p> <p>If you have any questions, special requirements or concerns, please send us an inquiry and/or contact our Support team ahead of purchase. Recommended alternatives for this product can be found below, along with publications, customer reviews and Q&As</p>

Properties

Form	Liquid
Storage instructions	Shipped at 4°C. Upon delivery aliquot. Store at -20°C or -80°C. Avoid freeze / thaw cycle.
Storage buffer	pH: 7.4 Constituent: PBS
Purity	Protein A purified
Clonality	Polyclonal
Isotype	IgG

Applications

The Abpromise guarantee Our **Abpromise guarantee** covers the use of ab103369 in the following tested applications. The application notes include recommended starting dilutions; optimal dilutions/concentrations should be determined by the end user.

Application	Abreviews	Notes
WB		1/500 - 1/1000. Predicted molecular weight: 51 kDa.

Target

Function

Antagonizes the function of BMP4 by binding to it and preventing its interaction with receptors. Alters the fate commitment of neural stem cells from gliogenesis to neurogenesis. Contributes to neuronal differentiation of neural stem cells in the brain by preventing the adoption of a glial fate. May play a crucial role in dorsoventral axis formation. May play a role in embryonic bone formation (By similarity). May also play an important role in regulating retinal angiogenesis through modulation of BMP4 actions in endothelial cells.

Tissue specificity

Expressed in retinal pericytes.

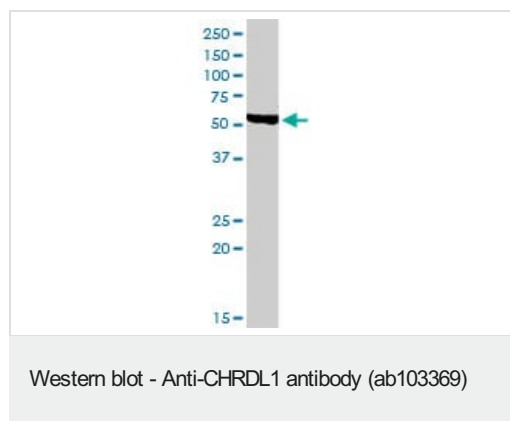
Sequence similarities

Contains 3 VWFC domains.

Cellular localization

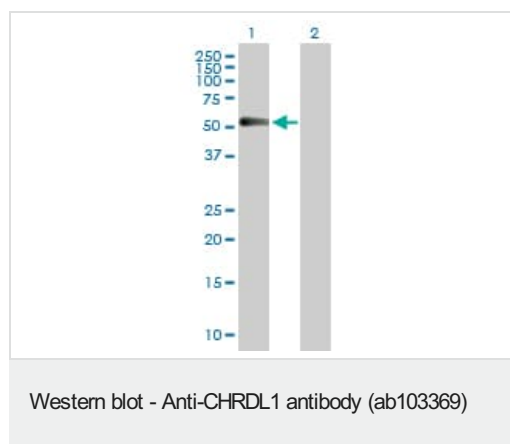
Secreted.

Images



Anti-CHRD1 antibody (ab103369) at 1/500 dilution + Mouse kidney tissue lysate

Predicted band size: 51 kDa



All lanes : Anti-CHRD1 antibody (ab103369) at 1/500 dilution

Lane 1 : CHRD1 transfected 293T cell lysate

Lane 2 : 293T non-transfected cell lysate

Predicted band size: 51 kDa

Please note: All products are "FOR RESEARCH USE ONLY. NOT FOR USE IN DIAGNOSTIC PROCEDURES"

Our Abpromise to you: Quality guaranteed and expert technical support

- Replacement or refund for products not performing as stated on the datasheet
- Valid for 12 months from date of delivery
- Response to your inquiry within 24 hours

- We provide support in Chinese, English, French, German, Japanese and Spanish
- Extensive multi-media technical resources to help you
- We investigate all quality concerns to ensure our products perform to the highest standards

If the product does not perform as described on this datasheet, we will offer a refund or replacement. For full details of the Abpromise, please visit <https://www.abcam.com/abpromise> or contact our technical team.

Terms and conditions

- Guarantee only valid for products bought direct from Abcam or one of our authorized distributors